



PARTS CATALOG

Published

2009/2 (Feb.)

0CNP2-G60100

SPECIFICATIONS

Model		YMD60	
Dimensions	Overall length (mm)	2550 (B lade:600)	
	Overall width (mm)	890	
	Overall height (mm)	1025	
	Weight (kg)	750 (B lade:600)	
	Ground clearance (mm)	150	
	Climbing ability (deg.)	25	
Engine	Name	YANMAR DIESEL ENGINE	
	Model	NFD10-LEMD	
	Displacement (cc)	493	
	Output (ps/rpm)	10/2400	
	Starting system	Cell motor starter	
Traveling unit	Type	Endless rubber CRAWLER	
	Crawler standard	180 mm Width × 60 mm pitch Endless rubber roller	
	Crawler width × Contact length (mm)	200 × 801	
	Contact pressure (kg/cm ²)	0.225	
	Travelling speed	Forward	1 st (km/h)
2 nd (km/h)			2.16
3 rd (km/h)			4.33
Backward (km/h)		1.62	
Digging system		Vibrating blade system	
Diameter of dug bowl (mm)		Std 500, 600 Attachement 400, 450	

※ All technical data, measurement and weight are approximate, and the manufacturer has the right to make alteration without prior notice.

PAINTING COLOR

SECTION	PAINTING COLOR	COLOR SPRAY	MAIN PARTS	COLOR CODE (FIGURE)
Main body	YANMAR Black	T:0 R:-9:0:2:2:0:0:0:3	Chassis	1 2
Main body	YANMAR Red	T:0 R:-9:0:4:0:0:0:0:3	Brade frame	5 0
Main body	YANMAR White	T:0 R:-9:0:2:5:0:0:0:2	R cover	1 4

Please surely use **YANMAR** Genuine color spray any **YANMAR** agricultural machines.

Given painting color may be altered for improvement, etc. without prior notice.



PARTS CATALOG

Published

2008/7 (Jul.)

0CNP2-G59800

CONTENTS

MODEL : NFD10-LEMD(N2601

PC NO : 0CNP2-G59800

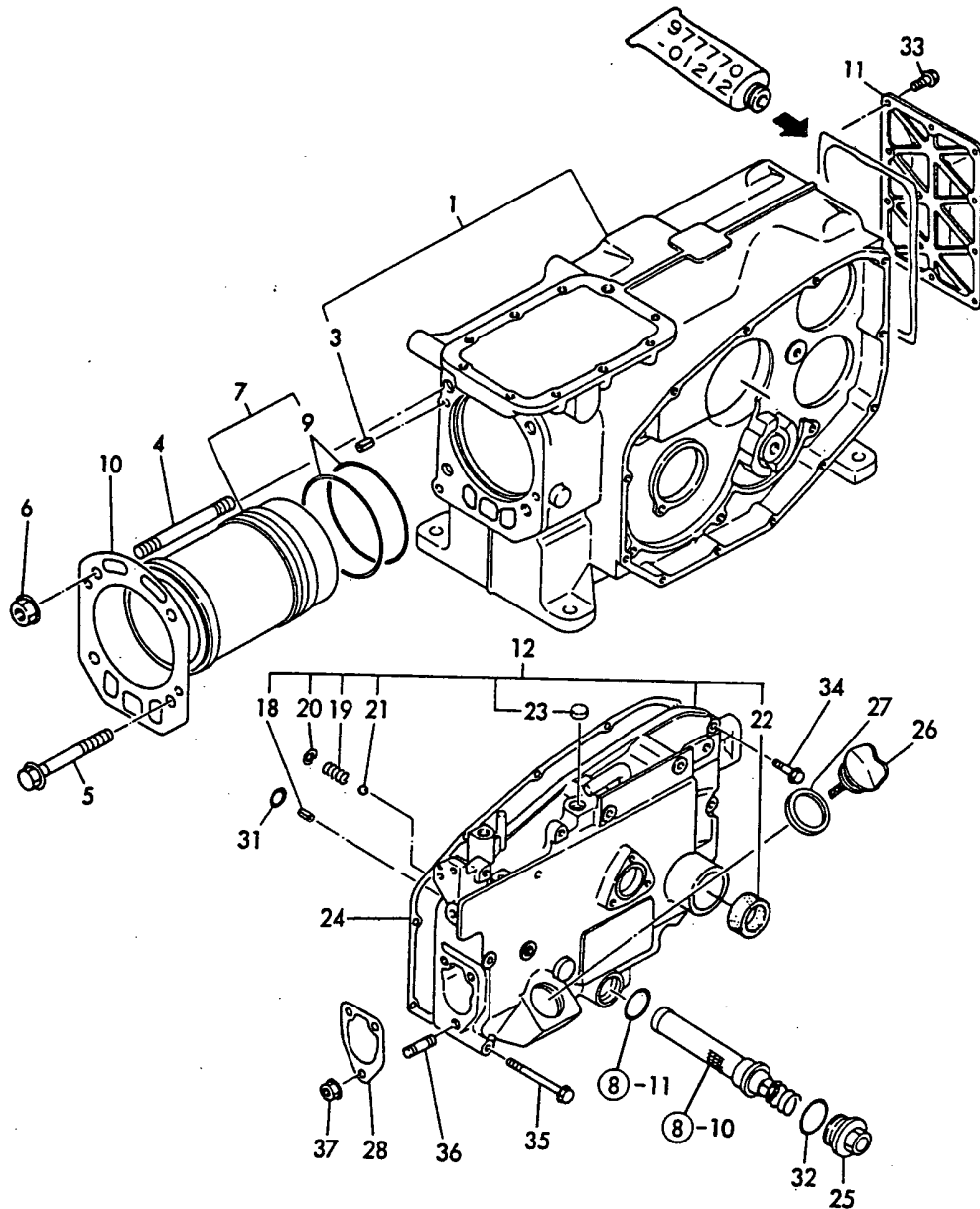
Fig.No. GROUP NAME
ENGINE UNIT(NFD10-LEMD)

1. CYLINDER BLOCK
2. LABEL
3. CYLINDER HEAD & BONNET
4. AIR CREAMER MUFFLER
5. CAMSHAFT & BARANCER
6. CRANKSHAFT & FLYWHEEL
7. PISTON & CONECTING ROD
8. L.O.SYSTEM & STARTING DEVICE
9. RADIATER & FUEL TANK
10. FAN
11. FUEL INJECTION PUMP
12. FUEL OIL SYSTEM
13. GOVERNOR & CONTROL DEVICE
14. STARTING MOTOR

Fig.No. GROUP NAME

Fig.1. CYLINDER BLOCK

1. CYLINDER BLOCK



OCNP2-G59800 1. CYLINDER BLOCK

(A)=NFD10-LEMD

(B)=

(C)=

(D)=

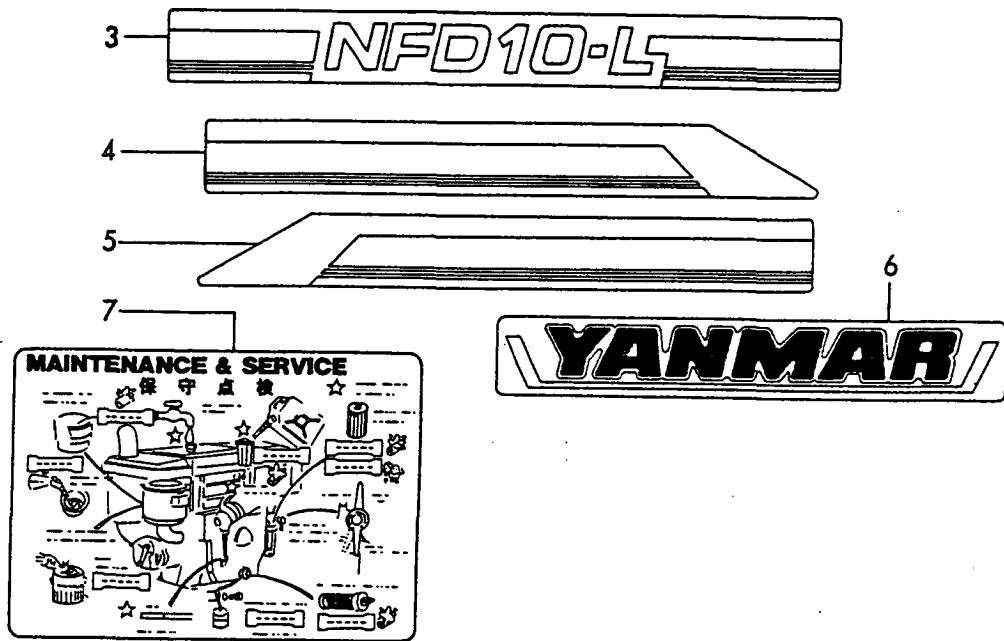
(E)=

(F)=

REF.	LEV.	PARTS NO.	DESCRIPTION	QTY						I	R
				(A)	(B)	(C)	(D)	(E)	(F)		
1	1	705300-01561	BODY ASSY, CYLINDER	1							
3	2	22351-060012	SPRING PIN 6X12	2							
4	1	105230-01200	STUD, CYL. HEAD	2							
5	1	121550-01200	BOLT, CYL. HEAD	2							
6	1	121450-01220	NUT, CYL. HEAD	2							
7	1	705400-01900	LINER W/ O-RING,CYL.	1							
9	2	105300-01300	O-RING, CYL. LINER	2							
I 10	1	105300-01331	GASKET, CYL. HEAD	1							
11	1	105300-01480	COVER, CYL. REAR	1							
12	1	705302-01502	HOUSING, ASSY GEAR	1							
18	2	22351-060012	SPRING PIN 6X12	1							
19	2	105300-34040	SPRING	1							
20	2	22252-000100	CIRCLIP 10	1							
21	2	24190-120001	BALL 3/8,STEEL	1							
22	2	105140-76500	SEAL TC 25 35 6, OIL	1							
23	2	105100-01660	SEAL, BLIND	1							
24	1	105300-01410	GASKET, GEAR CASE	1							
25	1	105300-01690	PLUG, DRAIN	1							
26	1	105302-01750	CAP,FILLER	1							
27	1	101104-01760	GASKET, CAP	1							
28	1	104271-01950	SHIM SET	1							
31	1	24311-000060	O-RING 1A P-6.0	1							
32	1	24321-000250	O-RING 1A G-25.0	1							
33	1	26106-060162	BOLT M 6X 16 PLATED	10							
34	1	26106-060252	BOLT M 6X 25 PLATED	7							
35	1	26106-060652	BOLT M 6X 65 PLATED	5							
36	1	26216-080222	STUD M 8X 22 PLATED	3							
37	1	26366-080002	NUT M 8	3							
I 38	1	22217-080000	SPRING WASHER 8	1							W
		(A=EXXXXX)									
I 39	1	26216-080222	STUD M 8X 22 PLATED	1							W
		(A=EXXXXX)									
I 40	1	26716-080002	NUT M 8	1							W
		(A=EXXXXX)									

Fig.2. LABEL

2. LABEL



0CNP2-G59800 2. LABEL

(A)=NFD10-LEMD

(B)=

(C)=

(D)=

(E)=

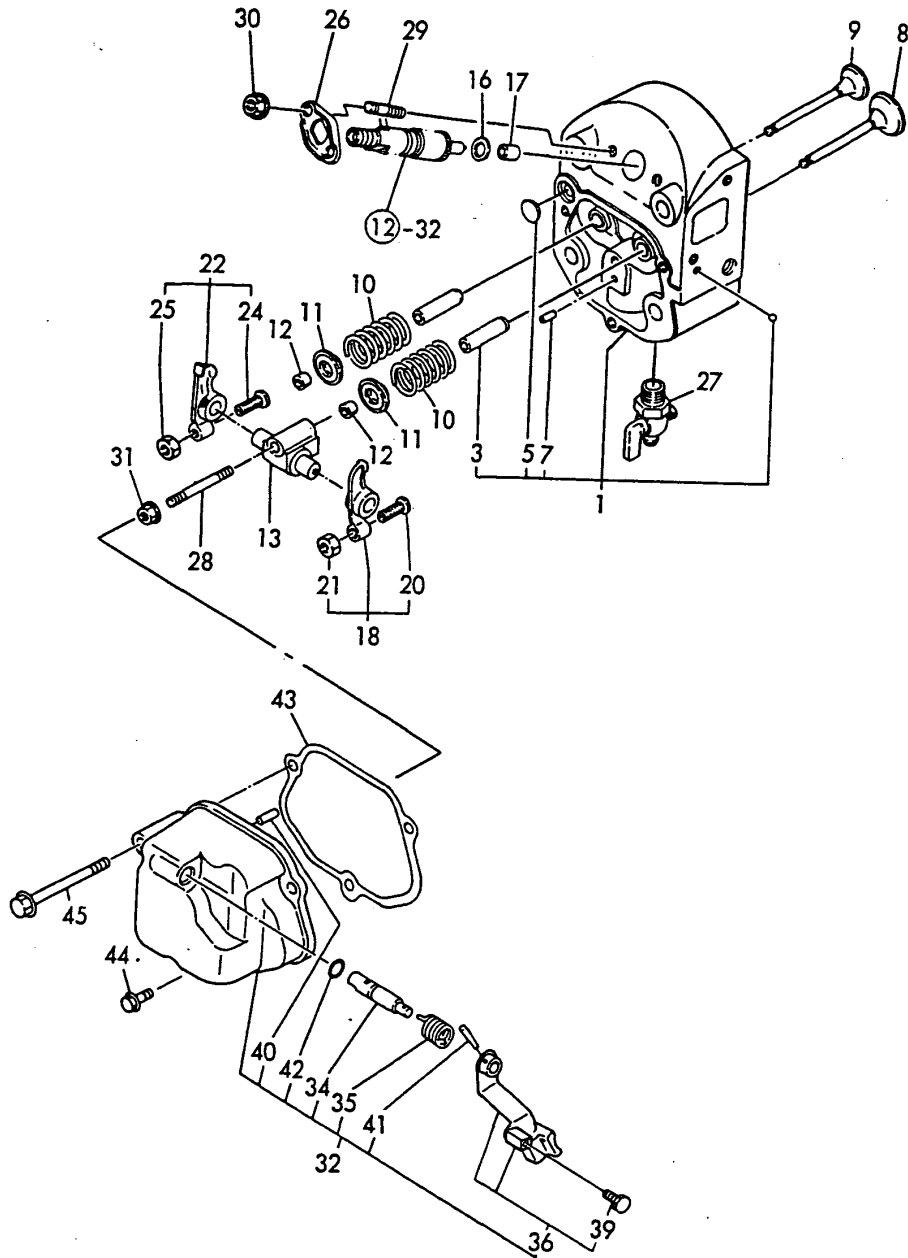
(F)=

REF.	LEV.	PARTS NO.	DESCRIPTION	QTY						I	R
				(A)	(B)	(C)	(D)	(E)	(F)		
3	1	105402-07070	LABEL	2							
4	1	105402-07080	LABEL	1							
5	1	105402-07090	LABEL	1							
6	1	105092-07101	LABEL	1							
7	1	105402-07100	LABEL	1							
I	7-1	1	105300-07100	LABEL	1						N

(A=EXXXXX)

Fig.3. CYLINDER HEAD & BONNET

3. CYLINDER HEAD & BONNET



OCNP2-G59800 3. CYLINDER HEAD & BONNET

(A)=NFD10-LEMD

(B)=

(C)=

(D)=

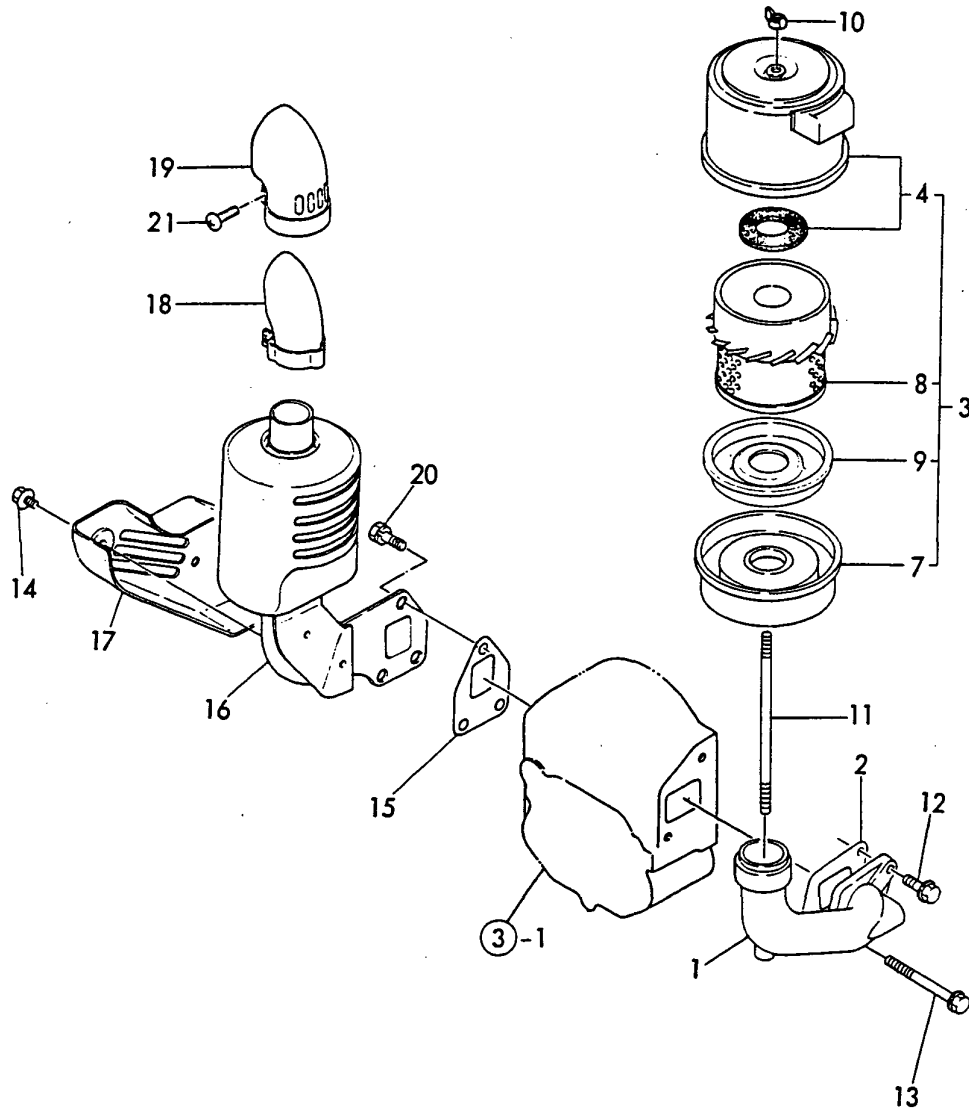
(E)=

(F)=

REF.	LEV.	PARTS NO.	DESCRIPTION	QTY						I	R
				(A)	(B)	(C)	(D)	(E)	(F)		
1	1	705400-11700	HEAD ASSY, CYLINDER	1							
3	2	105300-11801	GUIDE, VALVE	2							
5	2	27231-150000	PLUG 15	1							
7	2	105300-11330	PIN	1							
8	1	105300-11100	VALVE, SUCTION	1							
9	1	105300-11111	VALVE, EXHAUST	1							
10	1	105400-11121	SPRING, VALVE	2							
11	1	101158-11180	RETAINER, SPRING	2							
12	1	101158-11190	COTTER	4							
13	1	105300-11290	SUPPORT, ROCKER ARM	1							
16	1	119625-11880	SEAT, NOZZLE	1							
17	1	119625-11870	PROTECTOR, NOZZLE	1							
18	1	105300-11650	ARM ASSY,ROCKER(SUC.	1							
20	2	101158-11230	SCREW, VALVE	1							
21	2	26756-080002	LOCK NUT M 8 PLATED	1							
22	1	105300-11660	ARM ASSY,ROCKER(EXH.	1							
24	2	101158-11230	SCREW, VALVE	1							
25	2	26756-080002	LOCK NUT M 8 PLATED	1							
I	26	105300-11900	RETAINER, F. INJECT.	1							
27	1	105010-11920	COCK	1							
28	1	26216-080452	STUD M 8X 45 PLATED	1							
I	29	26216-060352	STUD M 6X 35 PLATED	2							
30	1	26366-060002	NUT M 6	2							
31	1	26366-080002	NUT M 8	1							
32	1	705302-11520	BONNET ASSY, HEAD	1							
34	2	104200-03600	SHAFT, DECOMPRESSION	1							
35	2	104200-03641	SPRING,DECOMPRESSION	1							
36	2	105302-03740	LEVER, DECOMPRESSION	1							
39	3	105225-66990	SCREW	1							
40	2	22312-030180	PARALLEL PIN 3X18	1							
41	2	22322-030180	TAPER PIN 3X18	1							
42	2	24311-000070	O-RING 1A P-7.0	1							
43	1	105300-11310	GASKET, BONNET	1							
I	44	26106-060202	BOLT M 6X 20 PLATED	2							
45	1	26106-060602	BOLT M 6X 60 PLATED	1							

Fig.4. AIR CREAMER MUFFLER

4. AIR CREAMER MUFFLER



0CNP2-G59800 4. AIR CREAMER MUFFLER

(A)=NFD10-LEMD

(B)=

(C)=

(D)=

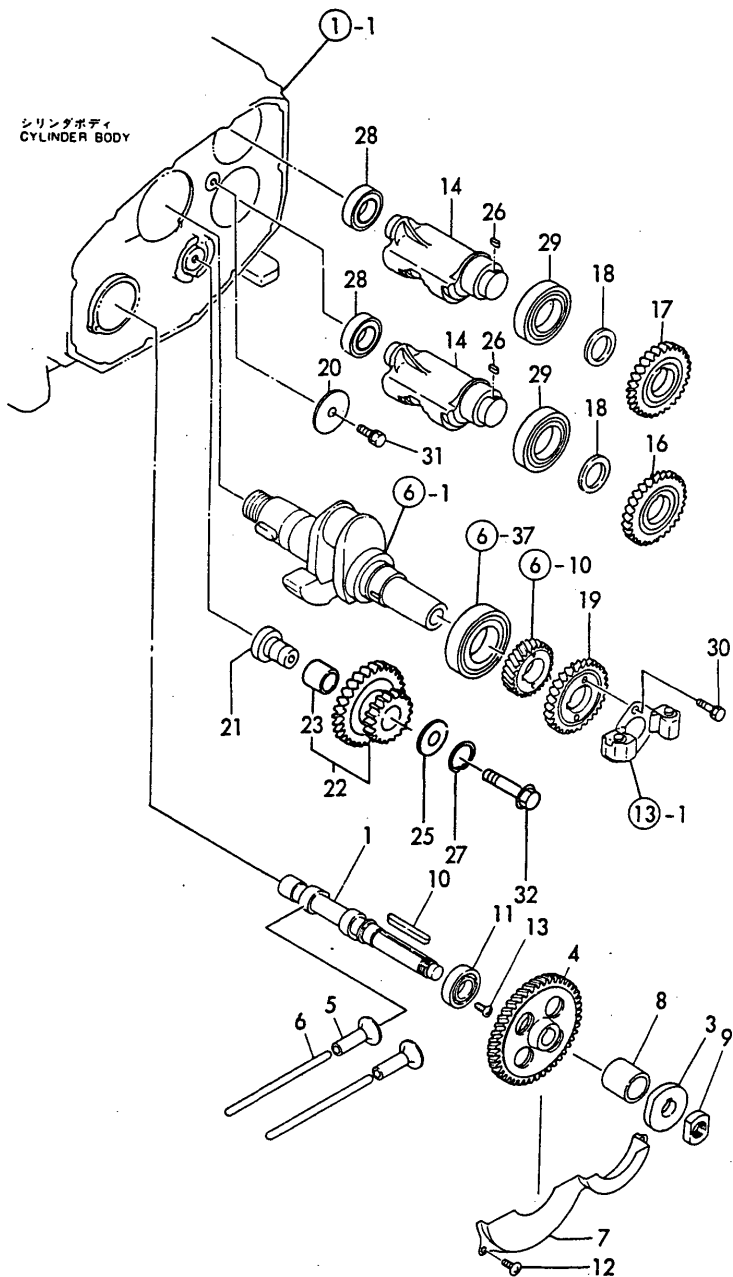
(E)=

(F)=

REF.	LEV.	PARTS NO.	DESCRIPTION	QTY						I	R
				(A)	(B)	(C)	(D)	(E)	(F)		
I	1	105400-12020	PIPE, SUCTION	1							
I	2	105400-12050	GASKET	1							
	3	105300-12511	CLEANER,AIR	1							
	4	2	105370-12531	COVER ASSY	1						
	7	2	105370-12540	PAN, DUST	1						
	8	2	105370-12570	ELMENT, AIR CLEANER	1						
	9	2	105370-12670	BAFFLE	1						
	10	1	101147-12550	WING NUT	1						
	11	1	105300-12550	BOLT, AIR CLEANER	1						
I	12	1	26106-080202	BOLT M 8X 20 PLATED	1						
I	13	1	26106-080602	BOLT M 8X 60 PLATED	1						
	14	1	160260-01580	BOLT M 6X 6	2						
	15	1	105300-13200	GASKET, SILENCER	1						
	16	1	105300-13522	SILENCER	1						
	17	1	105300-13550	COVER, ELBOW	1						
	18	1	105370-13570	EXTESION, EXH.	1						
	19	1	105212-13590	COVER	1						
	20	1	26013-080209	BOLT M 8X 20	3						
I	20-1	1	26013-080189	BOLT M 8X 18	3						N
			(A=E034039)								
	21	1	26554-060162	SCREW M 6X 16	1						

Fig.5. CAMSHAFT & BARANCER

5. CAMSHAFT & BARANCER



(A)=NFD10-LEMD
(B)=
(C)=

(D)=
(E)=
(F)=

REF.	LEV.	PARTS NO.	DESCRIPTION	QTY						I	R
				(A)	(B)	(C)	(D)	(E)	(F)		
1	1	105400-14010	CAMSHAFT	1							
3	1	105300-14090	CAM, FUEL	1							
4	1	105300-14100	GEAR, CAM SHAFT	1							
5	1	105300-14200	TAPPET	2							
6	1	105300-14400	PUSH-ROD	2							
7	1	105300-14600	COVER, GEAR	1							
8	1	105302-14700	SPACER	1							
9	1	104300-76460	NUT	1							
10	1	22512-070600	KEY 7X 60	1							
11	1	24101-060064	BALL BEARING	1							
12	1	26022-060122	SCREW M 6X 12	3							
13	1	26587-080122	SCREW M 8X 12	1							
14	1	105300-28251	SHAFT, BALANCER	2							
16	1	105300-28300	GEAR, BALANCER	1							
17	1	105300-28310	GEAR, BALANCER	1							
18	1	105300-28380	COLLAR, SHAFT	2							
19	1	105300-28410	GEAR, BALANCER	1							
20	1	105300-28450	RETAINER	1							
21	1	105302-28701	IDLE SHAFT	1							
22	1	105302-28710	GEAR W/BUSH	1							
23	2	105302-28720	BUSH	1							
25	1	105362-28750	SPACER	1							
26	1	105215-76490	KEY	2							
27	1	22242-000210	CIRCLIP 21	1							
28	1	24101-060054	BALL BEARING	2							
29	1	24101-060084	BALL BEARING	2							
30	1	26013-060222	BOLT M 6X 22	2							
31	1	26106-080162	BOLT M 8X 16 PLATED	1							
32	1	26106-100652	BOLT M10X 65 PLATED	1							

Fig.6. CRANKSHAFT & FLYWHEEL

(A)=NFD10-LEMD

(B)=

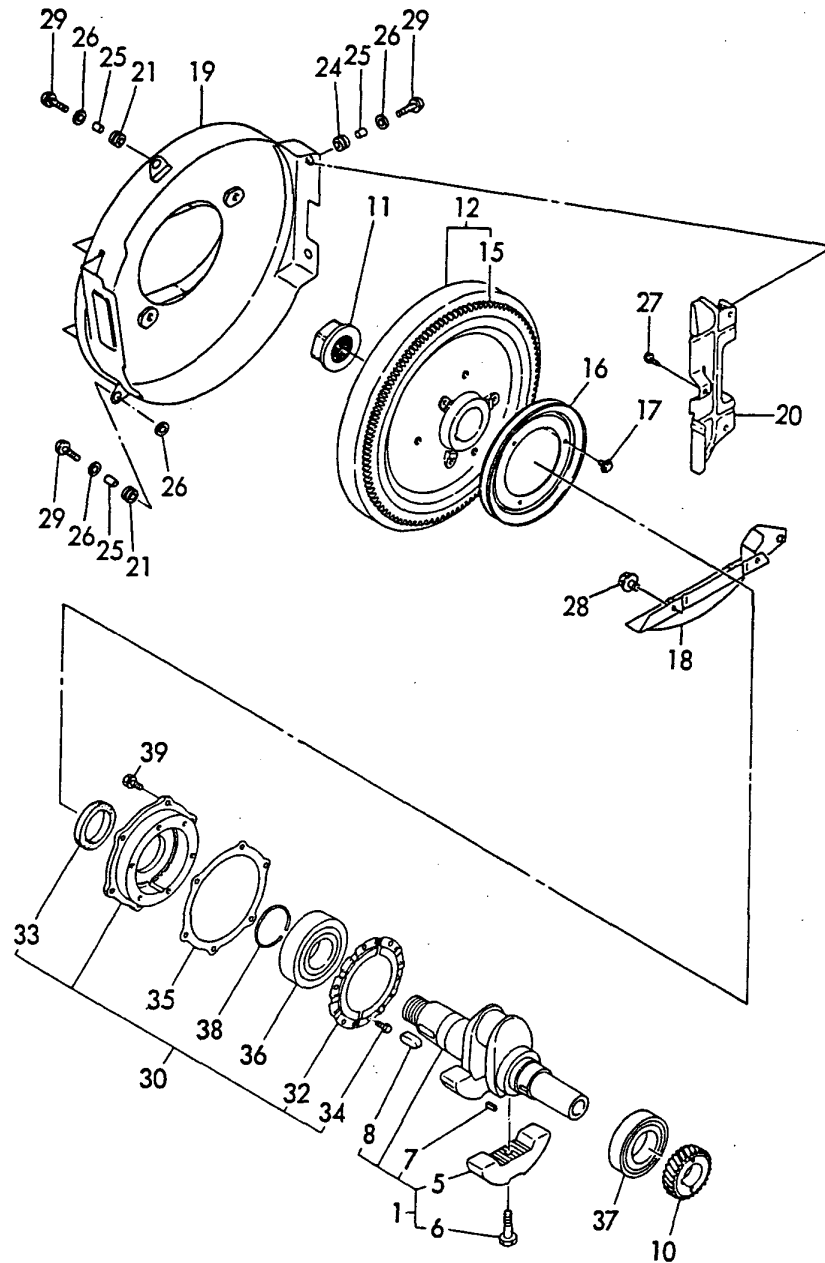
(C)=

(D)=

(E)=

(F)=

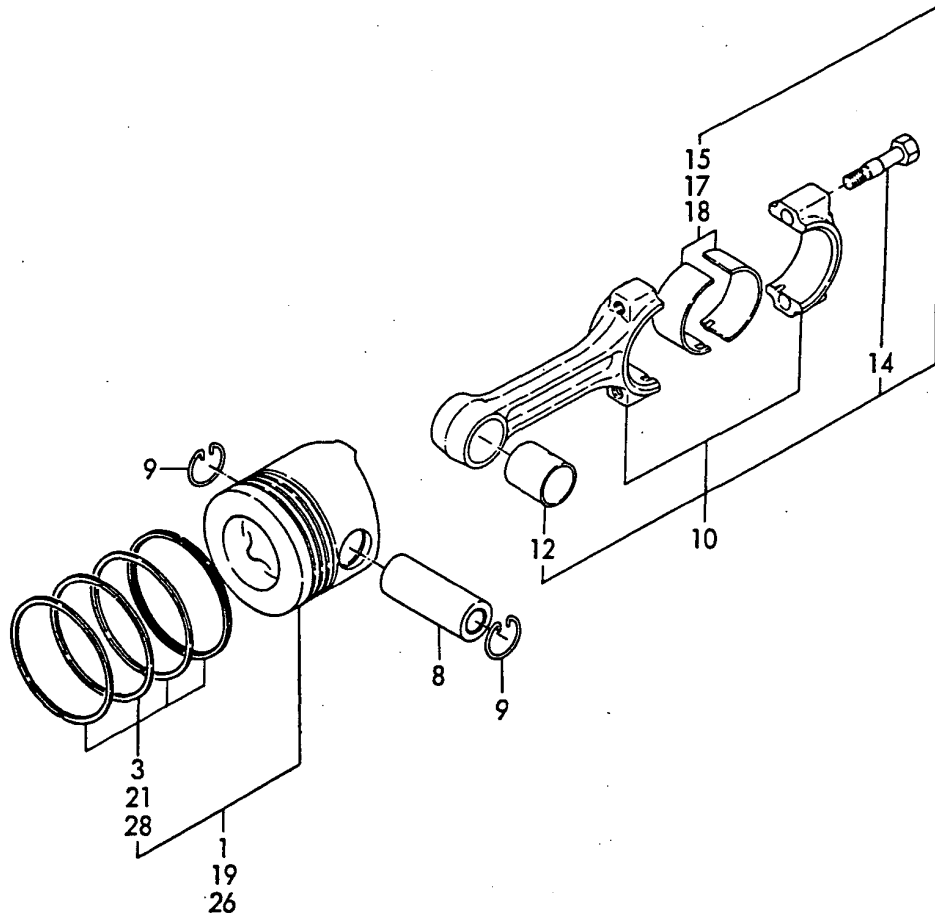
6. CRANKSHAFT & FLYWHEEL



REF.	LEV.	PARTS NO.	DESCRIPTION	QTY						I	R
				(A)	(B)	(C)	(D)	(E)	(F)		
1	1	705300-21700	CRANKSHAFT ASSY.	1							
5	2	105300-21100	WEIGHT, BALANCER	2							
6	2	106100-21130	BOLT, BALANCE WEIGHT	2							
7	2	22512-050120	KEY 5X 12	1							
8	2	22512-100260	KEY 10X 26	1							
10	1	105300-21200	GEAR, CRANKSHAFT	1							
11	1	104200-21530	END NUT	1							
12	1	105300-21591	FLYWHEEL W/RING GEAR	1							
15	2	105362-21600	GEAR, RING	1							
16	1	104104-21600	V-PULLEY	1							
17	1	26106-060122	BOLT M 6X 12 PLATED	3							
18	1	105302-21320	COVER	1							
19	1	105472-21350	COVER, FLYWHEEL	1							
20	1	105300-21360	COVER(A)	1							
21	1	105300-21381	PAD	2							
24	1	105300-44451	CUSHION, RUBBER	2							
25	1	105300-44460	SPACER	4							
26	1	160120-76940	WASHER	5							
27	1	26106-060122	BOLT M 6X 12 PLATED	3							
28	1	26106-060122	BOLT M 6X 12 PLATED	2							
29	1	26106-060202	BOLT M 6X 20 PLATED	4							
30	1	705300-02500	HOUSING ASSY,BEARING	1							
32	2	105230-02320	RETAINER	2							
33	2	123325-02500	SEAL, OIL	1							
34	2	26116-060102	BOLT M 6X 10 PLATED	6							
35	1	105300-02020	GASKET	1							
36	1	105400-02300	BALL BEARING	1							
37	1	105400-02310	ROLLER BEARING	1							
38	1	22242-000450	CIRCLIP 45	1							
39	1	26013-080202	BOLT W/WASHER M8X20	6							

Fig.7. PISTON & CONECTING ROD

7. PISTON & CONECTING ROD



OCNP2-G59800 7. PISTON & CONECTING ROD

(A)=NFD10-LEMD

(B)=

(C)=

(D)=

(E)=

(F)=

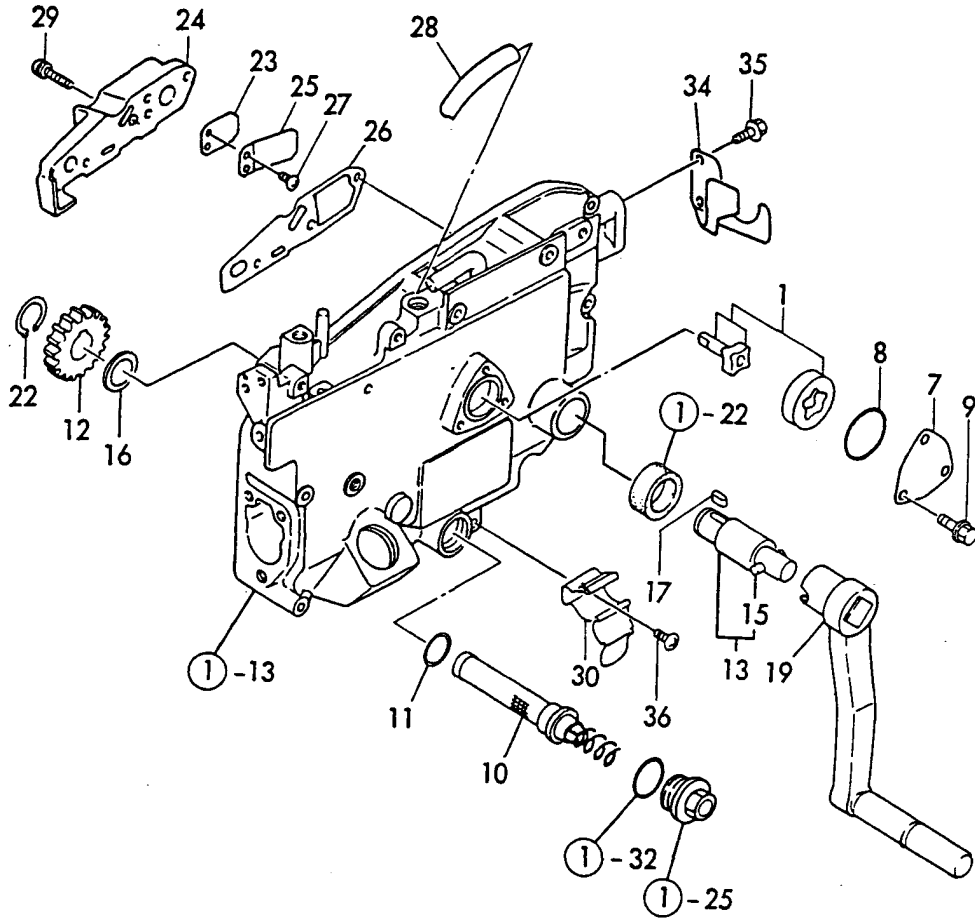
REF.	LEV.	PARTS NO.	DESCRIPTION	Q'TY						I	R
				(A)	(B)	(C)	(D)	(E)	(F)		
1	1	105400-22190	PISTON ASSY	1							
3	2	704500-22503	RING SET	1							
8	1	105300-22300	PIN, PISTON	1							
9	1	105300-22400	CIRCLIP	2							
10	1	705300-23100	ROD ASSY, CONNECTING	1							
12	2	105300-23910	BUSH, PISTON PIN	1							
14	2	105300-23200	BOLT, ROD	2							
15	2	705300-23600	BEARING, CRANK PIN	1							
17	2	705300-23610	BEARING,(0.25U.S.	1							1
18	2	705300-23620	BEARING,(0.50U.S.	1							2
19	1	105400-22471	PISTON W/RING 0.25	1							3
21	2	105400-22510	RING SET 0.25	1							3
26	1	105400-22481	PISTON W/RINGS 0.5	1							4
28	2	105400-22520	RING SET 0.5	1							4

Remarks

- (1)0.25=US UNDER SIZED PART
- (2)0.5 =US UNDER SIZED PART
- (3)0.25=OVER SIZED PART
- (4)0.5 =OVER SIZED PART

Fig.8. L.O.SYSTEM & STARTING DEVICE

8. L.O.SYSTEM & STARTING DEVICE



OCNP2-G59800 8. L.O.SYSTEM & STARTING DEVICE

(A)=NFD10-LEMD

(B)=

(C)=

(D)=

(E)=

(F)=

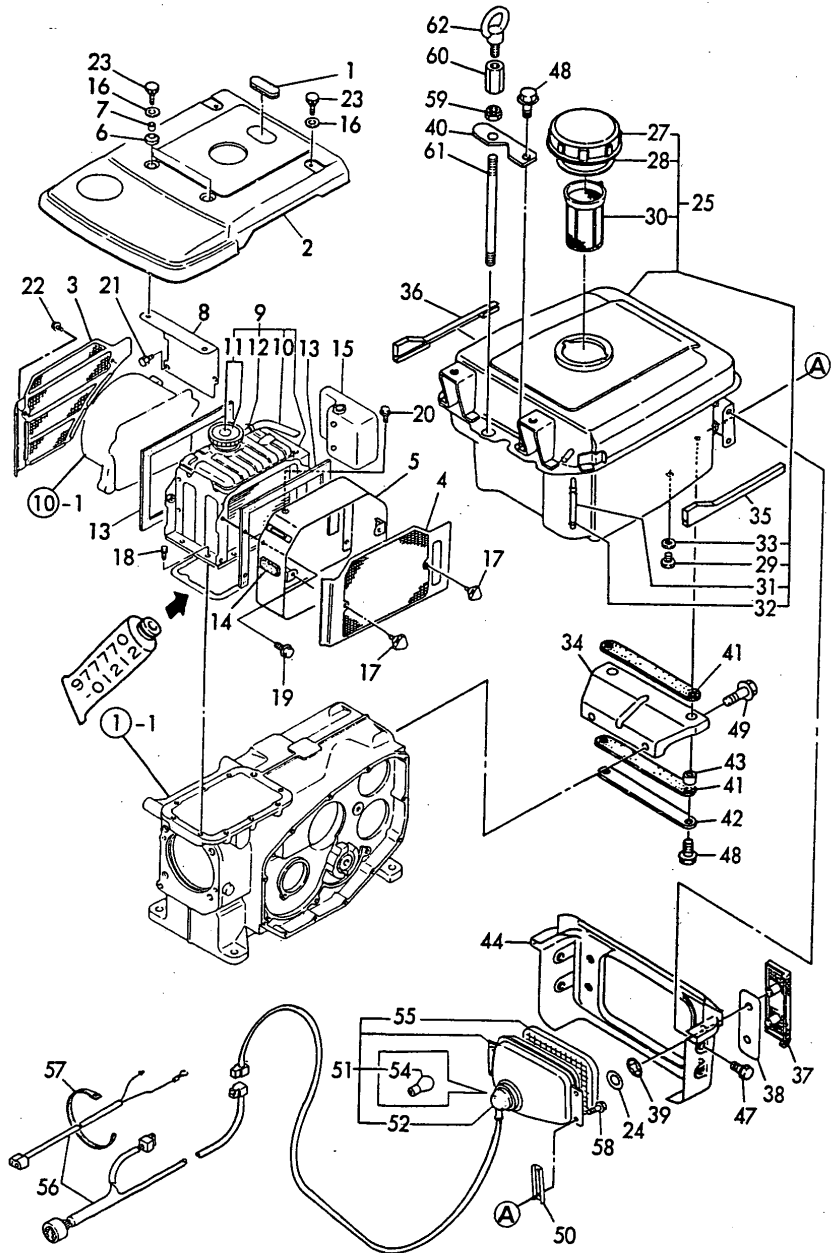
REF.	LEV.	PARTS NO.	DESCRIPTION	QTY						I	R
				(A)	(B)	(C)	(D)	(E)	(F)		
1	1	705300-32500	ROTOR ASSY, LUB. OIL	1							
7	1	103338-32070	COVER, LUB OIL PUMP	1							
8	1	103338-32570	O-RING	1							
9	1	26106-060122	BOLT M 6X 12 PLATED	3							
10	1	105300-35052	STRAINER, LUB. OIL	1							
11	1	24341-000200	O-RING 1A S-20.0	1							
12	1	105302-76330	GEAR, STARTING	1							
13	1	705302-76900	SHAFT W/PIN	1							
15	2	104200-76480	PARALLEL PIN	1							
16	1	105300-76470	COLLER, STARTING	1							
17	1	105300-76490	KEY 7X10	1							
19	1	105302-76790	START HANDLE	1							
22	1	22242-000200	CIRCLIP 20	1							
23	1	101158-03061	VALVE, CHECK	1							
24	1	105300-03082	COVER, BREATHER	1							
25	1	101158-03111	RETAINER	1							
26	1	105300-03130	GASKET	1							
27	1	105362-78960	SCREW	2							
28	1	23064-090400	PIPE	1							
29	1	26023-060252	SCREW M 6X 25	3							
30	1	105300-08510	CLAMP ASSY	1							
34	1	105302-08101	CLAMP, HANDLE	1							
35	1	26106-060122	BOLT M 6X 12 PLATED	2							
36	1	26557-060082	SCREW M 6X 8	1							

Fig.9. RADIATER & FUEL TANK

(A)=NFD10-LEMD
(B)=
(C)=

(D)=
(E)=
(F)=

9. RADIATER & FUEL TANK



REF.	LEV.	PARTS NO.	DESCRIPTION	QTY						I	R
				(A)	(B)	(C)	(D)	(E)	(F)		
1	1	105300-44220	BLIND,RADIATOR COVER	1							
2	1	105400-44250	COVER, RADIATOR	1							
3	1	105300-44330	SCREEN	1							
4	1	105402-44340	SCREEN	1							
5	1	105402-44360	DUCT	1							
6	1	105300-44451	CUSHION, RUBBER	2							
7	1	105300-44460	SPACER	2							
8	1	105300-44491	STAY	1							
9	1	105300-44512	RADIATOR COMPL.	1							
10	2	105300-44570	PIPE 7X170	1							
11	2	105198-44590	CAP, RADIATOR	1							
12	2	121250-44590	CLAMP	1							
13	1	104607-44540	PAD	2							
14	1	106100-44560	PAD	1							
15	1	105300-44630	SUB RESERVOIR	1							
16	1	160120-76940	WASHER	4							
17	1	160725-78350	KNOB (W/M6X15)	2							
18	1	26013-060142	BOLT M 6X 14	8							
19	1	26013-060129	BOLT M 6X 12	4							
20	1	26013-060162	BOLT M 6X 16	1							
21	1	26106-060122	BOLT M 6X 12 PLATED	2							
22	1	26106-060122	BOLT M 6X 12 PLATED	1							
23	1	26106-060202	BOLT M 6X 20 PLATED	4							
24	1	120270-09310	GASKET	4							
25	1	705402-55700	TANK ASSY, FUEL	1							
27	2	105302-55040	COVER	1							
28	2	101504-55051	GASKET, TANK CAP	1							
29	2	105300-55080	PLUG, DRAIN	1							
30	2	105372-55100	STRAINER, FUEL TANK	1							
31	2	104300-55160	PIPE, GAUGE	1							
32	2	103854-55220	CLAMP	2							
33	2	23414-080000	GASKET 8, ROUND	1							
34	1	105300-55240	BRACKET, FUEL TANK	1							
35	1	105402-55250	DECAL	1							
36	1	105402-55260	DECAL	1							
37	1	105292-55450	PLATE	2							
38	1	105292-55460	PLATE	2							
39	1	105292-55471	NUT M5	4							
40	1	105198-55520	RETAINER	1							
41	1	105400-55520	GROMMET	2							
42	1	105500-55530	RETAINER	1							
43	1	105100-55540	COLLAR, FUEL TANK	2							
44	1	105402-55810	COVER, LIGHT	1							
47	1	26106-060122	BOLT M 6X 12 PLATED	4							
48	1	26106-080222	BOLT M 8X 22 PLATED	3							
49	1	26106-100162	BOLT M10X 16 PLATED	2							
50	1	105402-55420	SPACER	2							
51	1	105377-78020	LAMP ASSY	1							
52	2	105372-78040	SOCKET W/WIRE	1							
54	2	105372-78250	BULB	1							
55	2	105372-78260	LENS, LAMP	1							

Fig.9. RADIATER & FUEL TANK

(A)=NFD10-LEMD

(B)=

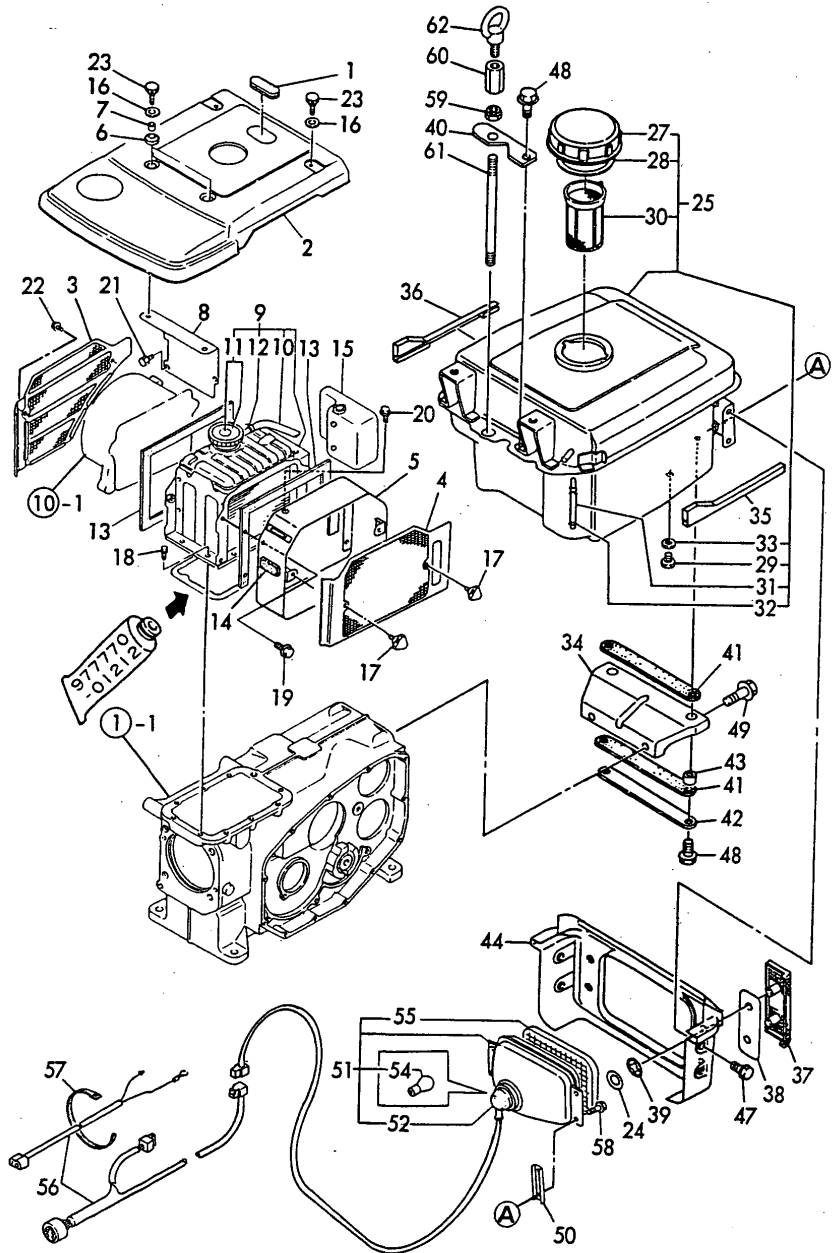
(C)=

(D)=

(E)=

(F)=

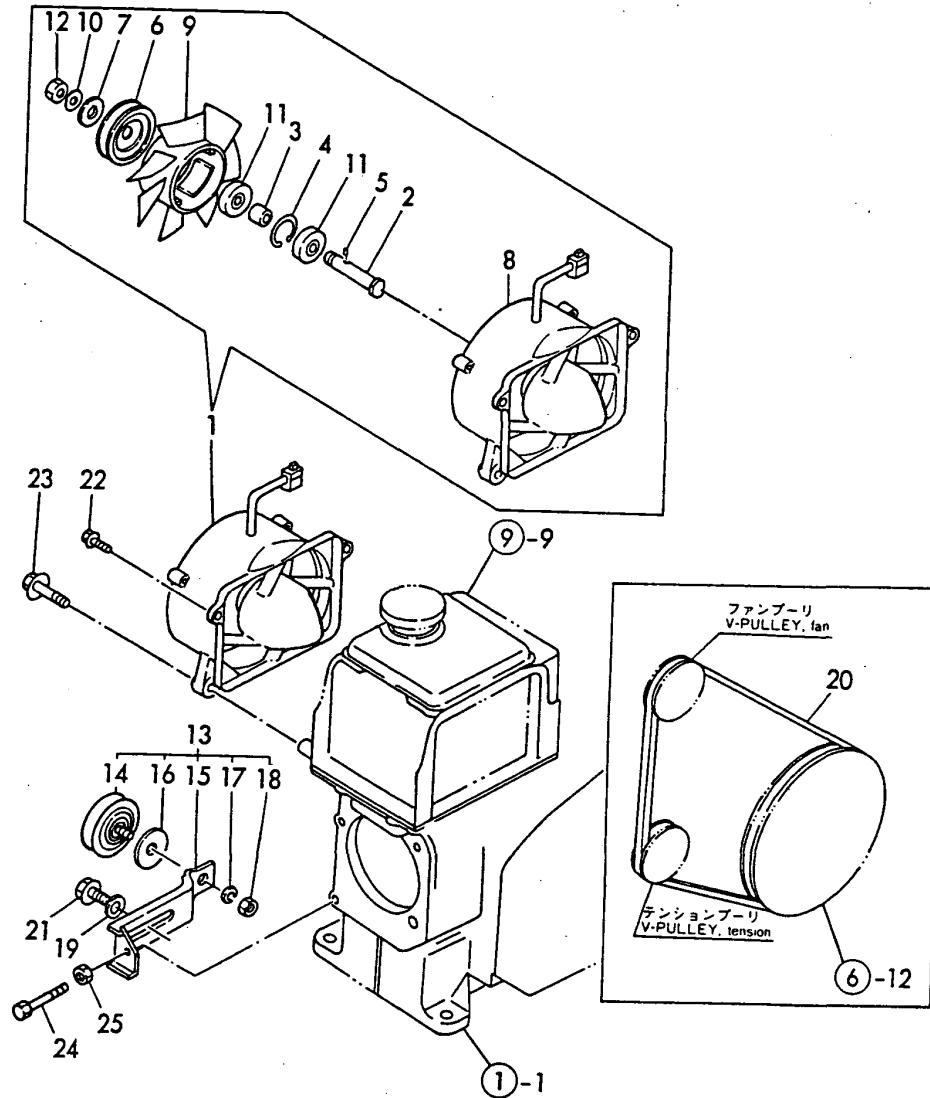
9. RADIATER & FUEL TANK



REF.	LEV.	PARTS NO.	DESCRIPTION	QTY						I	R
				(A)	(B)	(C)	(D)	(E)	(F)		
56	1	105192-78540	WIRE HARNESS	1							
57	1	160370-78950	BAND, WIRE	1							
58	1	26106-060202	BOLT M 6X 20 PLATED	4							
59	1	104107-07900	NUT (M10)	1							
60	1	105300-07910	NUT, LIFTER	1							
61	1	105300-07940	STUD, LIFTER	1							
62	1	26617-100002	EYE BOLT M10	1							

Fig.10. FAN

10. FAN



(A)=NFD10-LEMD

(B)=

(C)=

(D)=

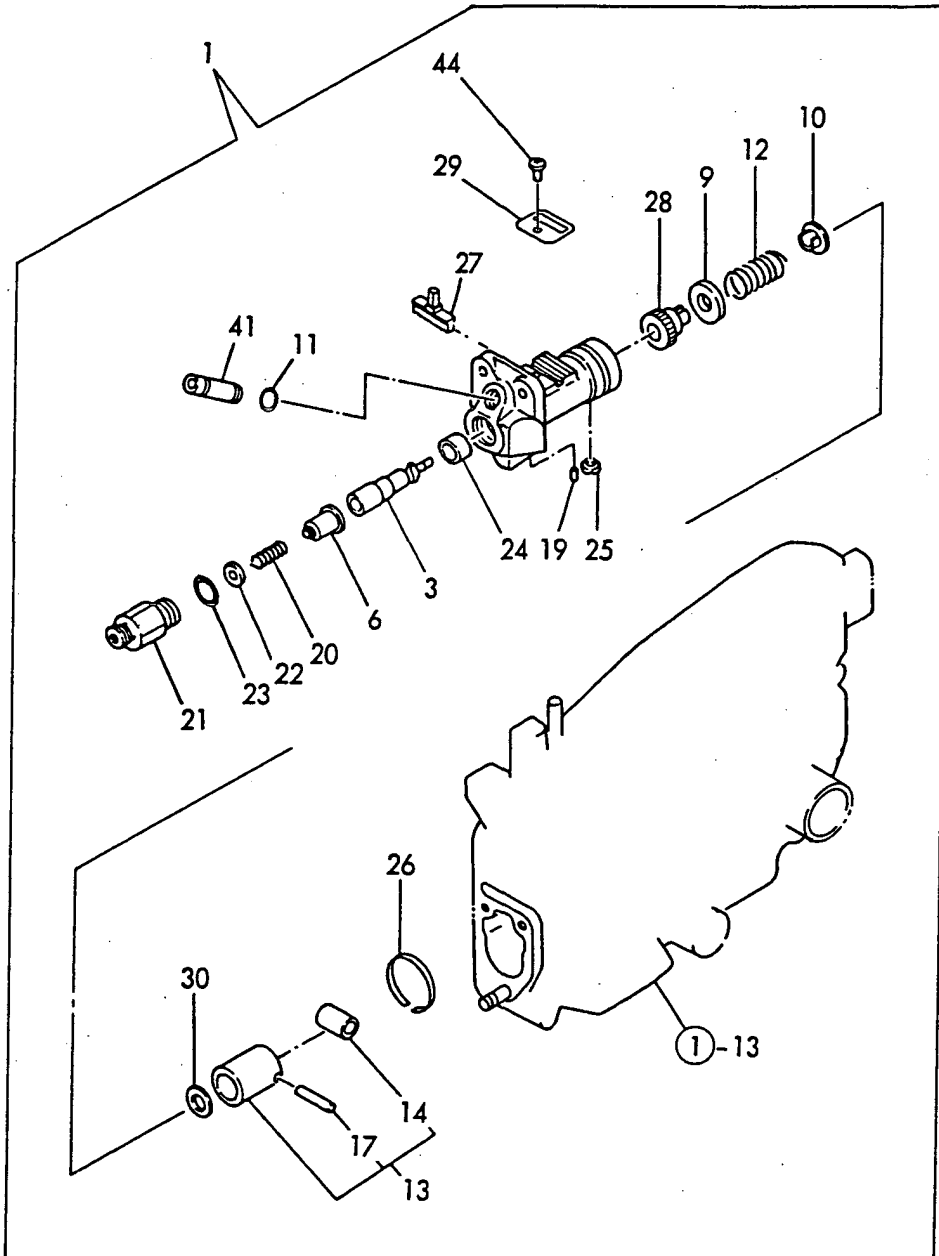
(E)=

(F)=

REF.	LEV.	PARTS NO.	DESCRIPTION	QTY						I	R
				(A)	(B)	(C)	(D)	(E)	(F)		
1	1	105300-44212	FAN CASE	1							
2	2	105340-44710	SHAFT, FAN	1							
3	2	106383-44720	SPACER	1							
4	2	106383-44740	CIRCLIP	1							
5	2	105340-44750	PIN	1							
6	2	105100-44770	PULLEY, FAN	2							
7	2	105100-44780	WASHER	1							
8	2	105400-44800	COVER	1							
9	2	105300-44850	FAN	1							
10	2	22217-120000	WASHER 12,SPRING	1							
11	2	24107-062013	BALL BEARING	2							
12	2	26777-120002	LOCK NUT M12	1							
13	1	105300-44810	PULLEY ASSY, TENSION	1							
14	2	106100-44650	PULLEY, TENSION	1							
15	2	105300-44940	LEVER	1							
16	2	106100-44960	CAP	1							
17	2	22217-080000	SPRING WASHER 8	1							
18	2	26716-080002	NUT M 8	1							
19	1	22137-080000	WASHER 8, POLISHED	1							
20	1	25117-003751	V-BELT M1375	1							
21	1	26013-080162	BOLT W/WASHER M8X16	1							
22	1	26106-060252	BOLT M 6X 25 PLATED	2							
23	1	26106-080302	BOLT M 8X 30 PLATED	2							
24	1	26116-060504	BOLT M 6X 50 PLATED	1							
25	1	26756-060002	LOCK NUT M 6 PLATED	1							

Fig.11. FUEL INJECTION PUMP

11. FUEL INJECTION PUMP



OCNP2-G59800 11. FUEL INJECTION PUMP

(A)=NFD10-LEMD

(B)=

(C)=

(D)=

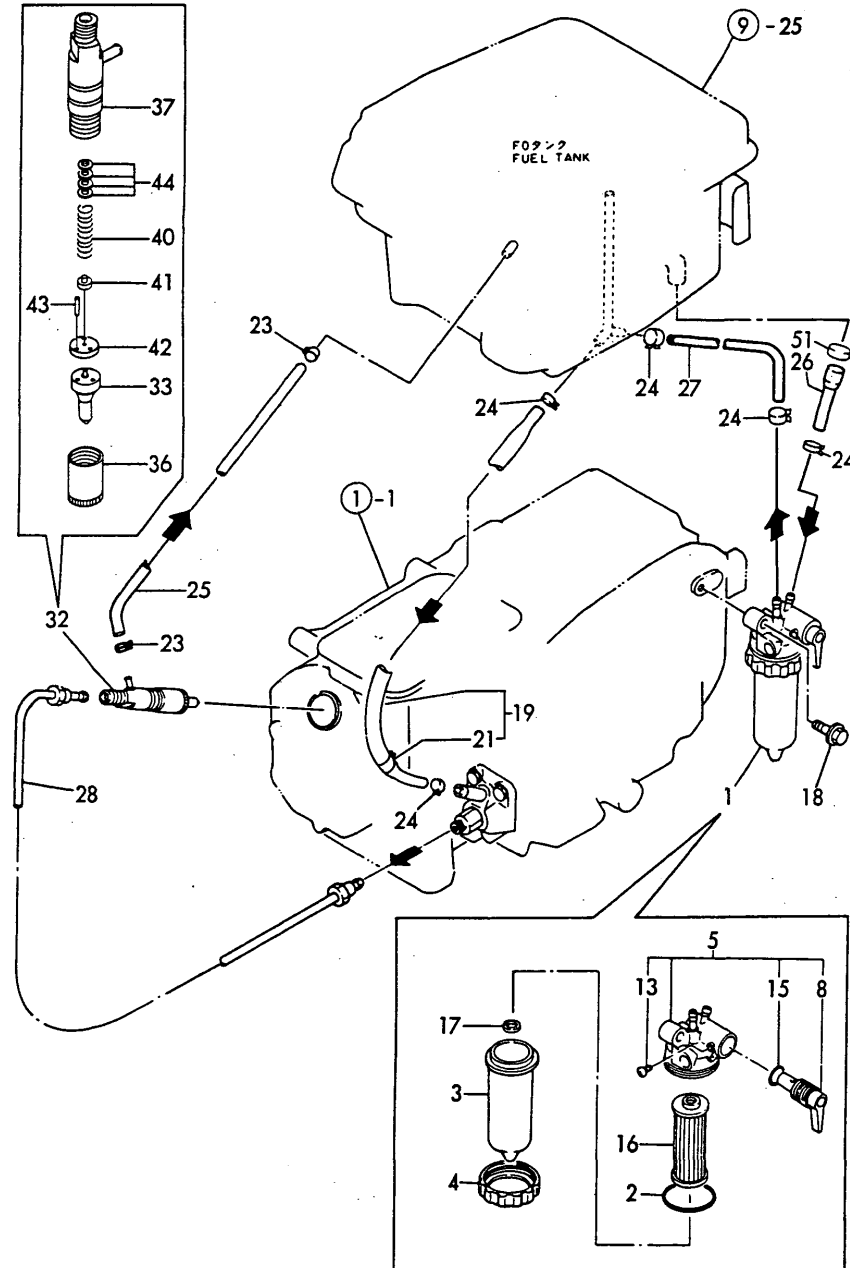
(E)=

(F)=

REF.	LEV.	PARTS NO.	DESCRIPTION	QTY						I	R
				(A)	(B)	(C)	(D)	(E)	(F)		
1	1	705400-51103	PUMP ASSY. F.INJECT.	1							
3	2	105200-51100	PLUNGER W/BARREL	1							
6	2	129499-51300	VALVE W/SEAT, DELIV.	1							
9	2	174307-51170	RETAINER A	1							
10	2	174307-51181	RETAINER B	1							
11	2	114250-51190	O-RING	1							
12	2	124950-51190	SPRING, PLUNGER	1							
13	2	724550-51520	GUIDE, PLUNGER	1							
14	3	711100-51540	ROLLER ASSY	1							
17	3	174100-54120	PIN, ROLLER	1							
19	2	103854-51251	PIN, PLUNGER	1							
20	2	124550-51320	SPRING, DELIV. VALVE	1							
21	2	124550-51341	RETAINER	1							
22	2	124550-51350	GASKET, DELIVERY	1							
23	2	124550-51370	O-RING, DELIVERY	1							
24	2	105300-51400	RETAINER	1							
25	2	104271-51450	PIECE, GUIDE	1							
26	2	104271-51460	CIRCLIP	1							
27	2	105300-51500	RACK	1							
28	2	105300-51510	PINION	1							
29	2	105300-51550	RETAINER	1							
30	2	174307-51700	SHIM SET	1							
41	2	105300-51800	JOINT	1							
44	2	26022-050102	SCREW M 5X 10	1							

Fig.12. FUEL OIL SYSTEM

12. FUEL OIL SYSTEM



(A)=NFD10-LEMD

(B)=

(C)=

(D)=

(E)=

(F)=

REF.	LEV.	PARTS NO.	DESCRIPTION	QTY						I	R
				(A)	(B)	(C)	(D)	(E)	(F)		
1	1	105370-55650	STRAINER ASSY, FUEL	1							
2	2	105300-55520	O-RING, BOWL	1							
3	2	105300-55530	BOWL, STRAINER	1							
4	2	105300-55610	RING, RETAINER	1							
5	2	105300-55700	BODY ASSY, STRAINER	1							
8	3	105300-55340	LEVER	1							
13	3	104200-55750	SCREW M 4	1							
15	3	24311-000160	O-RING 1A P-16.0	1							
16	2	105370-55710	ELEMENT,FO. STRAINER	1							
17	2	105300-55750	FLOAT, STRAINER	1							
18	1	26106-080302	BOLT M 8X 30 PLATED	1							
19	1	105300-59020	PIP W/CLAMP, FUEL	1							
21	2	124766-59050	CLAMP 12	1							
23	1	124722-59050	CLAMP 9	2							
24	1	124766-59050	CLAMP 12	4							
25	1	105300-59100	PIPE, FUEL RETURN	1							
26	1	105300-59561	PIPE, FUEL OIL	1							
27	1	105300-59570	PIPE, FUEL OIL	1							
28	1	105300-59800	PIPE, FUEL INJECTION	1							
32	1	729500-53200	VALVE ASSY, F.INJECT	1							
33	2	129500-53050	NOZZLE ASSY,F.INJECT	1							
36	2	114250-53080	NUT, NOZZLE CASE	1							
37	2	105300-53100	HOLDER, W/JOINT	1							
40	2	114250-53120	SPRING, NOZZLE	1							
41	2	114250-53130	SEAT, NOZZLE SPRING	1							
42	2	114250-53140	PLATE, STOP	1							
43	2	114250-53210	PIN	2							
44	2	114250-53400	SHIM PACK	1							
51	1	129301-03660	CLAMP 16	1							

Fig.13. GOVERNOR & CONTROL DEVICE

13. GOVERNOR & CONTROL DEVICE

(A)=NFD10-LEMD

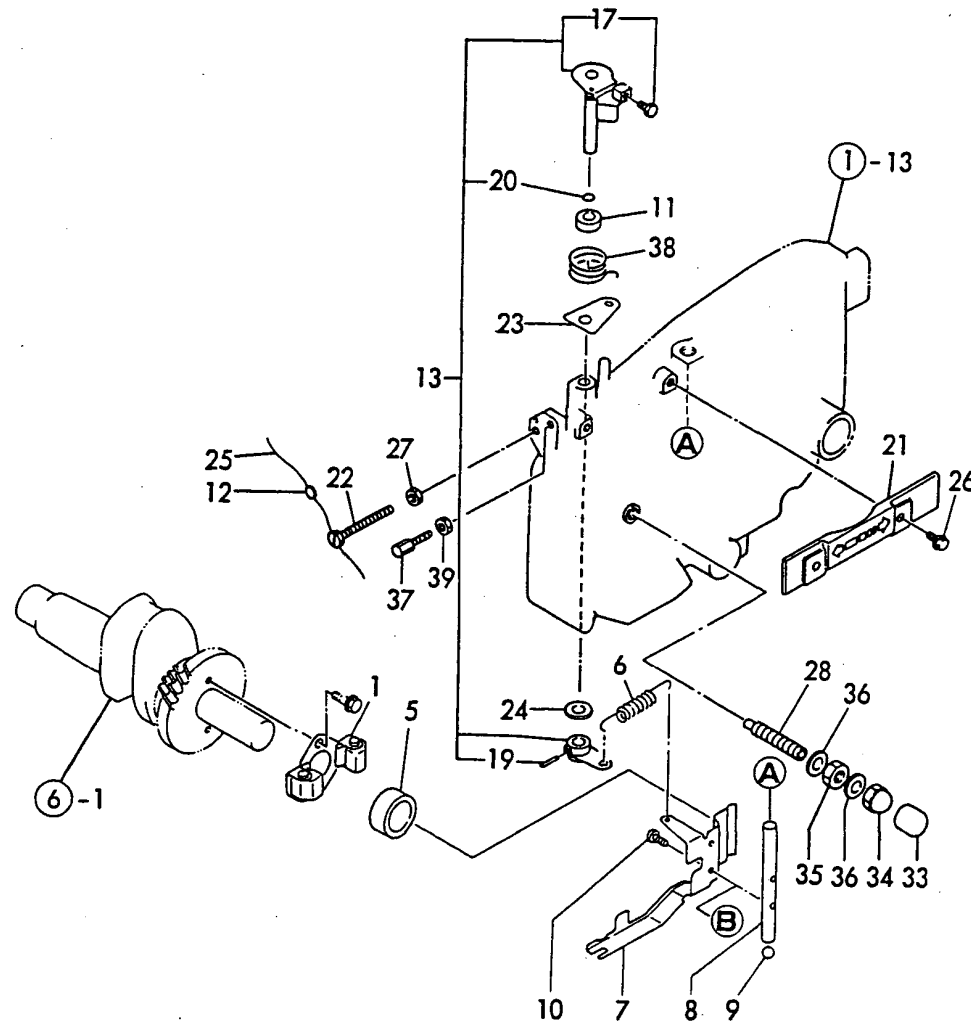
(B)=

(C)=

(D)=

(E)=

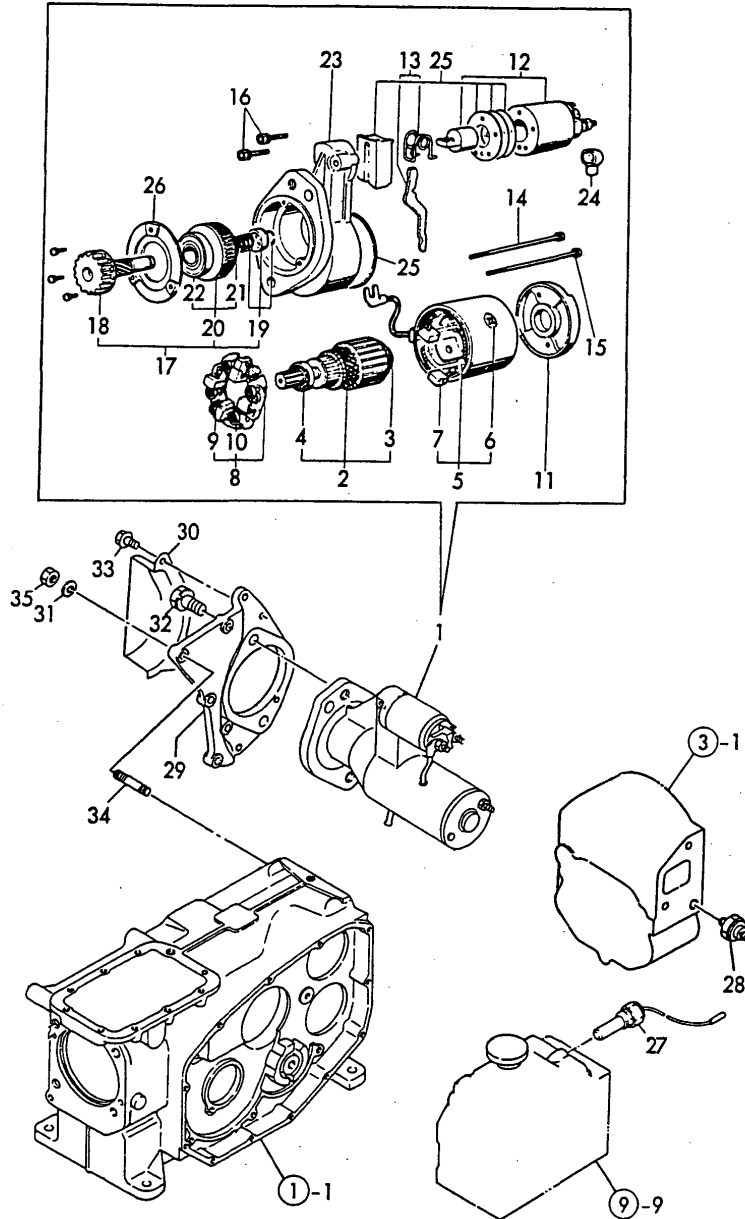
(F)=



REF.	LEV.	PARTS NO.	DESCRIPTION	QTY						I	R
				(A)	(B)	(C)	(D)	(E)	(F)		
1	1	705300-61700	GOVERNOR ASSY.	1							
I	1-1	705300-61702	GOVERNOR ASSY	1							R
(A=E034857)											
5	1	105300-61600	SLEEVE, GOVERNOR	1							
6	1	105300-66011	SPRING, REGULATOR	1							
7	1	105300-66300	LEVER, GOVERNOR	1							
8	1	105300-66400	SHAFT, GOV. LEVER	1							
9	1	24190-120001	BALL 3/8,STEEL	1							
10	1	26022-050102	SCREW M 5X 10	2							
11	1	121575-21850	WASHER	1							
12	1	135210-61090	LEAD	1							
13	1	705302-66530	HANDLE ASSY, REGLAT	1							
17	3	105225-66990	SCREW	1							
19	2	22322-030200	TAPER PIN 3X20	1							
20	2	24311-000070	O-RING 1A P-7.0	1							
21	1	105300-66110	COVER	1							
22	1	105300-66520	SCREW	1							
23	1	105300-66850	RETAINER	1							
24	1	22117-100000	WASHER 10	1							
25	1	22451-060080	WIRE 0.6X80	1							
26	1	26106-060122	BOLT M 6X 12 PLATED	2							
27	1	26756-060002	LOCK NUT M 6 PLATED	1							
28	1	105090-66551	LIMITTER ASSY. FUEL	1							
I	33	105300-66610	CAP	1							
34	1	124060-66950	CAP NUT	1							
35	1	26796-100002	NUT M10,LOCK	1							
36	1	43400-500430	SEAL WASHER 10	2							
37	1	102100-67080	BOLT, ADJUSTING	1							
38	1	105502-67301	SPRING	1							
39	1	26756-060002	LOCK NUT M 6 PLATED	1							

Fig.14. STARTING MOTOR

14. STARTING MOTOR



OCNP2-G59800 14. STARTING MOTOR

(A)=NFD10-LEMD

(B)=

(C)=

(D)=

(E)=

(F)=

REF.	LEV.	PARTS NO.	DESCRIPTION	QTY						I	R
				(A)	(B)	(C)	(D)	(E)	(F)		
I	1	105100-77010	STARTER MOTOR	1							
	2	X211461005	ARMATURE	1							
	3	X211415502	BALL BEARING	1							
	4	X211425502	BALL BEARING	1							
	5	X211442003	COIL ASSY, FIELD	1							
	6	X21143215	SCREW, CORE	1							
	7	X211469002	BRUSH (+)	2							
	8	X211479001	HOLDER ASSY, BRUSH	1							
	9	X211459002	BRUSH (-)	2							
	10	X21148314	SPRING, BRUSH	4							
	11	X211483003	COVER, REAR	1							
	12	X211447007	SWITCH, MAGNETIC	1							
	13	X211446012	LEVER, SHIFT	1							
	14	X211468005	BOLT, THROUGH	1							
	15	X21148856	THROUGH BOLT	1							
	16	X21145866	BOLT	2							
	17	X211455011	PINION ASSY	1							
	18	X211465011	SHAFT, PINION	1							
	19	X211429006	STOPPER SET	1							
	20	X211425506	CLUTCH ASSY	1							
	21	X211435502	BALL BEARING	1							
	22	X211455502	BALL BEARING	1							
	23	X211466605	CASE ASSY, GEAR	1							
	24	X21142742	COVER (A), RUBBER	1							
	25	X211458012	DUST COVER SET	1							
	26	X211428008	RETAINER, BEARING	1							
I	27	124060-39451	SENDER, OIL PRESSURE	1							
I	28	105300-44900	SENDER	1							
	29	105300-77470	BRACKET	1							
I	30	105372-77480	COVER, PINION	1							Z
		(A=EXXXXX)									
	31	22217-060000	SPRING WASHER 6	4							
	32	26013-120302	BOLT W/WASHER M12X30	2							
I	33	26106-060102	BOLT M 6X 10 PLATED	2							Z
		(A=EXXXXX)									
	34	26216-060202	STUD M 6X 20 PLATED	4							
	35	26716-060002	NUT M 6	4							

Part Number Index

All parts are stipulated in the order of part numbers.

(Depending on the area in which the part is used.)

This index will display the location of the part according to each part number.

PARTS No. INDEX

PARTS No.	Fig.	Ref.No.
101104-01760	1	27
101147-12550	4	10
101158-03061	8	23
101158-03111	8	25
101158-11180	3	11
101158-11190	3	12
101158-11230	3	20
		24
101504-55051	9	28
102100-67080	13	37
103338-32070	8	7
103338-32570	8	8
103854-51251	11	19
103854-55220	9	32
104104-21600	6	16
104107-07900	9	59
104200-03600	3	34
104200-03641	3	35
104200-21530	6	11
104200-55750	12	13
104200-76480	8	15
104271-01950	1	28
104271-51450	11	25
104271-51460	11	26
104300-55160	9	31
104300-76460	5	9
104607-44540	9	13
105010-11920	3	27
105090-66551	13	28
105092-07101	2	6
105100-01660	1	23
105100-44770	10	6
105100-44780	10	7
105100-55540	9	43
105100-77010	14	1
105140-76500	1	22
105192-78540	9	56
105198-44590	9	11
105198-55520	9	40
105200-51100	11	3
105212-13590	4	19
105215-76490	5	26
105225-66990	3	39
	13	17
105230-01200	1	4
105230-02320	6	32
105292-55450	9	37
105292-55460	9	38
105292-55471	9	39
105300-01300	1	9

PARTS No.	Fig.	Ref.No.
105300-01331	1	10
105300-01410	1	24
105300-01480	1	11
105300-01690	1	25
105300-02020	6	35
105300-03082	8	24
105300-03130	8	26
105300-07100	2	7 -1
105300-07910	9	60
105300-07940	9	61
105300-08510	8	30
105300-11100	3	8
105300-11111	3	9
105300-11290	3	13
105300-11310	3	43
105300-11330	3	7
105300-11650	3	18
105300-11660	3	22
105300-11801	3	3
105300-11900	3	26
105300-12511	4	3
105300-12550	4	11
105300-13200	4	15
105300-13522	4	16
105300-13550	4	17
105300-14090	5	3
105300-14100	5	4
105300-14200	5	5
105300-14400	5	6
105300-14600	5	7
105300-21100	6	5
105300-21200	6	10
105300-21360	6	20
105300-21381	6	21
105300-21591	6	12
105300-22300	7	8
105300-22400	7	9
105300-23200	7	14
105300-23910	7	12
105300-28251	5	14
105300-28300	5	16
105300-28310	5	17
105300-28380	5	18
105300-28410	5	19
105300-28450	5	20
105300-34040	1	19
105300-35052	8	10
105300-44212	10	1
105300-44220	9	1
105300-44330	9	3

PARTS No.	Fig.	Ref.No.
105300-44451	6	24
	9	6
105300-44460	6	25
	9	7
105300-44491	9	8
105300-44512	9	9
105300-44570	9	10
105300-44630	9	15
105300-44810	10	13
105300-44850	10	9
105300-44900	14	28
105300-44940	10	15
105300-51400	11	24
105300-51500	11	27
105300-51510	11	28
105300-51550	11	29
105300-51800	11	41
105300-53100	12	37
105300-55080	9	29
105300-55240	9	34
105300-55340	12	8
105300-55520	12	2
105300-55530	12	3
105300-55610	12	4
105300-55700	12	5
105300-55750	12	17
105300-59020	12	19
105300-59100	12	25
105300-59561	12	26
105300-59570	12	27
105300-59800	12	28
105300-61600	13	5
105300-66011	13	6
105300-66110	13	21
105300-66300	13	7
105300-66400	13	8
105300-66520	13	22
105300-66610	13	33
105300-66850	13	23
105300-76470	8	16
105300-76490	8	17
105300-77470	14	29
105302-01750	1	26
105302-03740	3	36
105302-08101	8	34
105302-14700	5	8
105302-21320	6	18
105302-28701	5	21
105302-28710	5	22
105302-28720	5	23

PARTS No.	Fig.	Ref.No.
105302-55040	9	27
105302-76330	8	12
105302-76790	8	19
105340-44710	10	2
105340-44750	10	5
105362-21600	6	15
105362-28750	5	25
105362-78960	8	27
105370-12531	4	4
105370-12540	4	7
105370-12570	4	8
105370-12670	4	9
105370-13570	4	18
105370-55650	12	1
105370-55710	12	16
105372-55100	9	30
105372-77480	14	30
105372-78040	9	52
105372-78250	9	54
105372-78260	9	55
105377-78020	9	51
105400-02300	6	36
105400-02310	6	37
105400-11121	3	10
105400-12020	4	1
105400-12050	4	2
105400-14010	5	1
105400-22190	7	1
105400-22471	7	19
105400-22481	7	26
105400-22510	7	21
105400-22520	7	28
105400-44250	9	2
105400-44800	10	8
105400-55520	9	41
105402-07070	2	3
105402-07080	2	4
105402-07090	2	5
105402-07100	2	7
105402-44340	9	4
105402-44360	9	5
105402-55250	9	35
105402-55260	9	36
105402-55420	9	50
105402-55810	9	44
105472-21350	6	19
105500-55530	9	42
105502-67301	13	38
106100-21130	6	6
106100-44560	9	14

PARTS No. INDEX

PARTS No.	Fig.	Ref.No.
106100-44650	10	14
106100-44960	10	16
106383-44720	10	3
106383-44740	10	4
114250-51190	11	11
114250-53080	12	36
114250-53120	12	40
114250-53130	12	41
114250-53140	12	42
114250-53210	12	43
114250-53400	12	44
119625-11870	3	17
119625-11880	3	16
120270-09310	9	24
121250-44590	9	12
121450-01220	1	6
121550-01200	1	5
121575-21850	13	11
123325-02500	6	33
124060-39451	14	27
124060-66950	13	34
124550-51320	11	20
124550-51341	11	21
124550-51350	11	22
124550-51370	11	23
124722-59050	12	23
124766-59050	12	21
		24
124950-51190	11	12
129301-03660	12	51
129499-51300	11	6
129500-53050	12	33
135210-61090	13	12
160120-76940	6	26
	9	16
160260-01580	4	14
160370-78950	9	57
160725-78350	9	17
174100-54120	11	17
174307-51170	11	9
174307-51181	11	10
174307-51700	11	30
43400-500430	13	36
704500-22503	7	3
705300-01561	1	1
705300-02500	6	30
705300-21700	6	1
705300-23100	7	10
705300-23600	7	15
705300-23610	7	17

PARTS No.	Fig.	Ref.No.
705300-23620	7	18
705300-32500	8	1
705300-61700	13	1
705300-61702	13	1 -1
705302-01502	1	12
705302-11520	3	32
705302-66530	13	13
705302-76900	8	13
705400-01900	1	7
705400-11700	3	1
705400-51103	11	1
705402-55700	9	25
711100-51540	11	14
724550-51520	11	13
729500-53200	12	32
X211415502	14	3
X211425502	14	4
X211425506	14	20
X21142742	14	24
X211428008	14	26
X211429006	14	19
X21143215	14	6
X211435502	14	21
X211442003	14	5
X211446012	14	13
X211447007	14	12
X211455011	14	17
X211455502	14	22
X211458012	14	25
X21145866	14	16
X211459002	14	9
X211461005	14	2
X211465011	14	18
X211466605	14	23
X211468005	14	14
X211469002	14	7
X211479001	14	8
X211483003	14	11
X21148314	14	10
X21148856	14	15

PARTS No.	Fig.	Ref.No.
-----------	------	---------

PARTS No.	Fig.	Ref.No.
-----------	------	---------



YANMAR CO.,LTD.

CONTENTS

MODEL : YMD60(
PC NO : 0CNP2-G60100

- Fig.No. GROUP NAME
- ENGINE & PULLEY SECTION
1. ENGIN MOUNTING
 2. PULLEY

- COVER SECTION
3. COVER

- FRAME SECTION
4. VIBRATOR FRAME

- VIBRATOR UNIT
5. REDUCTION GEAR CASE
 6. REDUCTION TRANSMISSION
 7. VIBRATOR CASE
 8. VIBRATOR
 9. OVERDRIVE GEAR CASE
 10. P.T.O. DRIVE

- BLADE SECTION
11. BLADE

- TRANSMISSION UNIT
12. TRAVEL CLUTCH
 13. TRANSMISSION CASE
 14. TRANSMISSION INTERIOR
 15. SPEED CHANGE

- HANDLE SECTION
16. HANDLE
 17. CONTROL

Fig.No. GROUP NAME

- HYDRAULIC SECTION
18. OIL TANK
 19. PIPING
 20. HYDRAULIC PUMP
 21. HYDRAULIC VALVE
 22. OIL MOTOR

- TRAVELING UNIT
23. CHASSIS FRAME
 24. IDLER
 25. TRACK ROLLER
 26. SPROCKET & CRAWLER

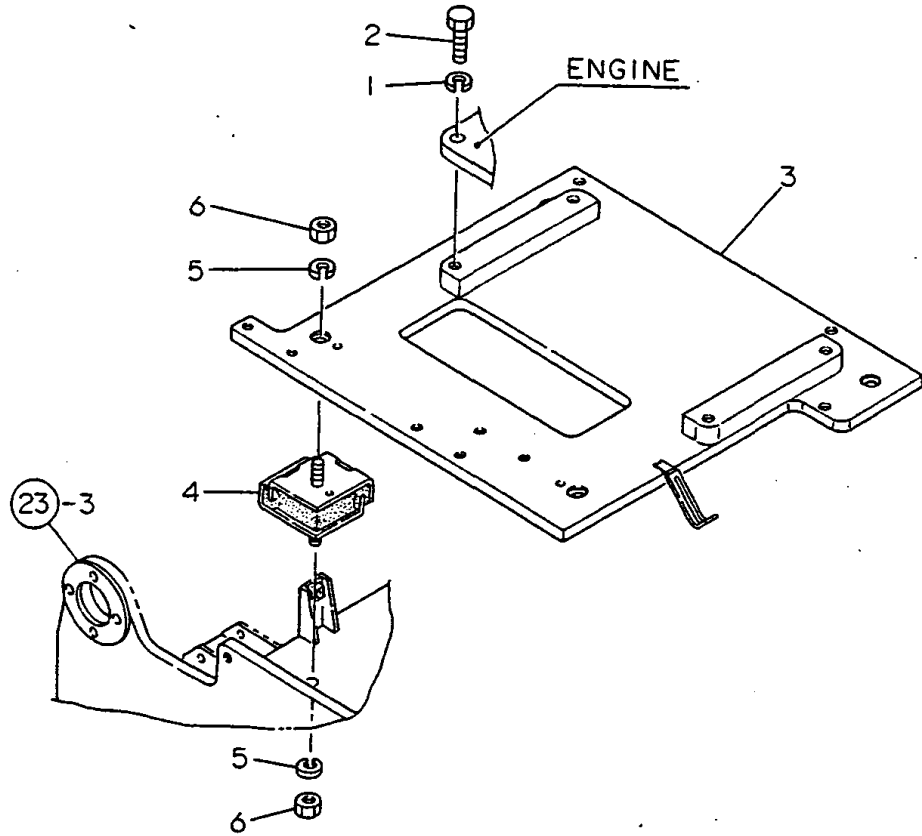
- ELECTRICAL PARTS SECTION
27. REGULATOR
 28. BATTERY

- LABEL SECTION
29. LABELS

- TOOL & ACCESSORY SECTION
30. TOOLS & ACCESSORIES

Fig.1. ENGINE MOUNTING

1. ENGINE MOUNTING



OCNP2-G60100 1. ENGINE MOUNTING

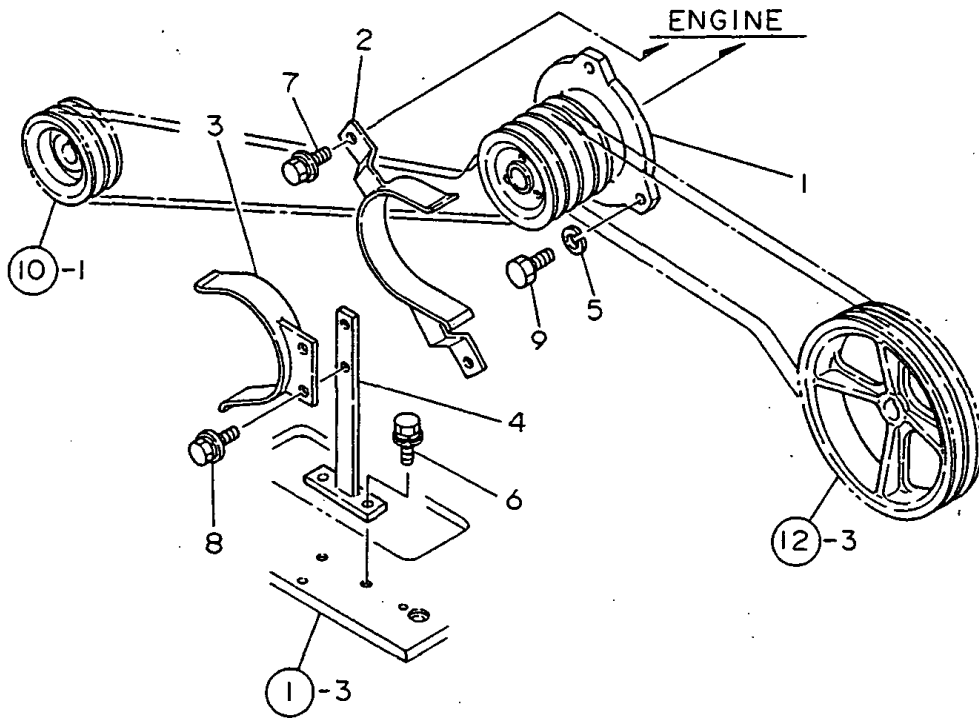
(A)=YMD60-EC
(B)=YMD60-N
(C)=

(D)=
(E)=
(F)=

REF.	LEV.	PARTS NO.	DESCRIPTION	QTY						I	R
				(A)	(B)	(C)	(D)	(E)	(F)		
1	1	22217-120000	WASHER 12,SPRING	4	4						
2	1	26116-120322	BOLT M12X 32 PLATED	4	4						
3	1	1E3001-01050	BED COMP.,ENGINE	1	1						
4	1	1E6470-01350	RUBBER 34X76.2,S.A.	4	4						
5	1	22217-120000	WASHER 12,SPRING	8	8						
6	1	26717-120002	NUT M12	8	8						

Fig.2. PULLEY

2. PULLEY



OCNP2-G60100 2. PULLEY

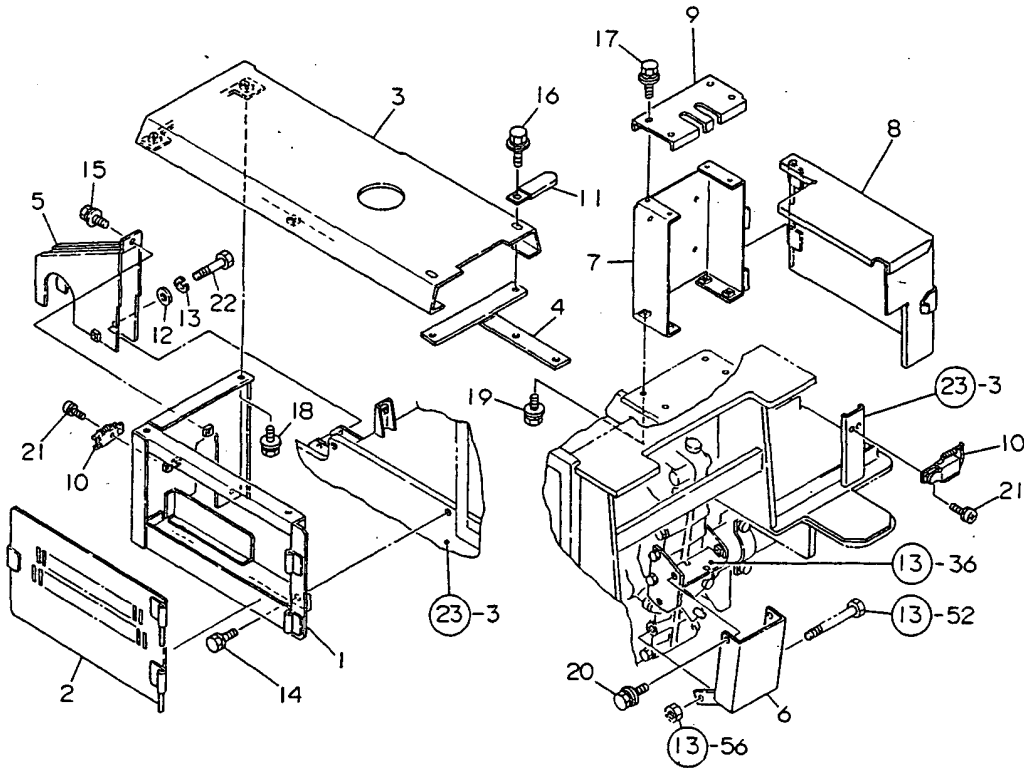
(A)=YMD60-EC
(B)=YMD60-N
(C)=

(D)=
(E)=
(F)=

REF.	LEV.	PARTS NO.	DESCRIPTION	Q'TY						I	R
				(A)	(B)	(C)	(D)	(E)	(F)		
1	1	1E3001-01020	PULLEY 100-B4	1	1						
2	1	1E3002-01100	RETAINER 1,BELT	1	1						
3	1	1E3002-01150	RETAINER 2,BELT	1	1						
4	1	1E3001-01190	SEAT,BELT RETAINER	1	1						
5	1	22217-120000	WASHER 12,SPRING	3	3						
6	1	26018-080204	BOLT M 8X 20	2	2						
7	1	26018-080164	BOLT M 8X 16	2	2						
8	1	26018-080164	BOLT M 8X 16	2	2						
9	1	26116-120352	BOLT M12X 35 PLATED	3	3						

Fig.3. COVER

3. COVER



OCNP2-G60100 3. COVER

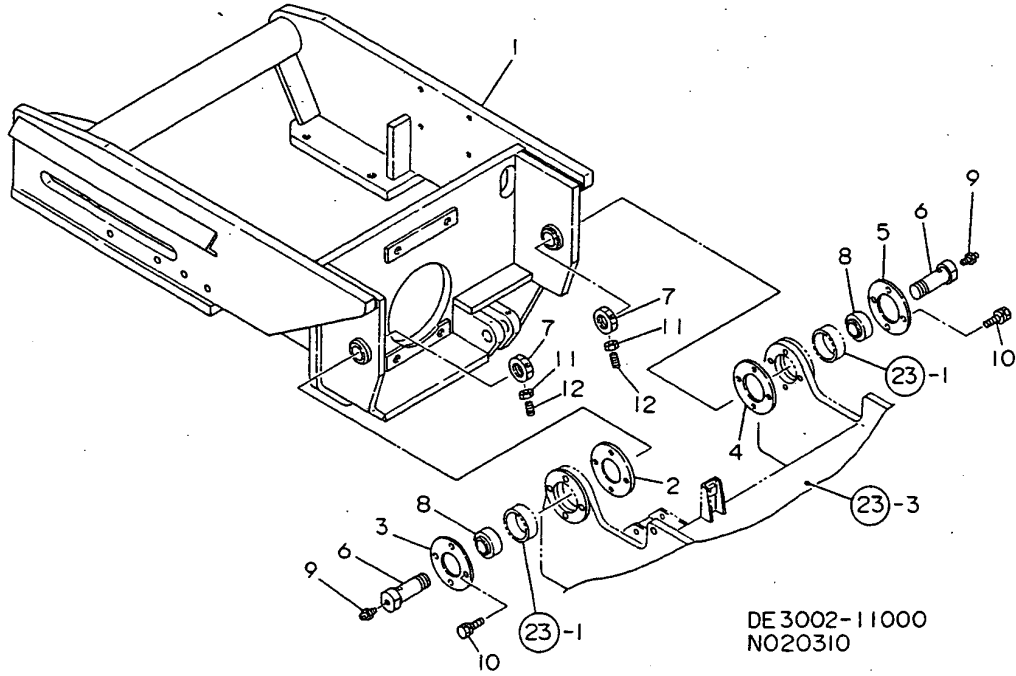
(A)=YMD60-EC
(B)=YMD60-N
(C)=

(D)=
(E)=
(F)=

REF.	LEV.	PARTS NO.	DESCRIPTION	QTY						I	R
				(A)	(B)	(C)	(D)	(E)	(F)		
1	1	1E3002-01300	COVER L	1	1						
2	1	1E3002-01450	LID,COVER L	1	1						
3	1	1E3002-01500-1	BONNET COMPL.	1	1						
4	1	1E3001-01601	SEAT,BONNET	1	1						
5	1	1E3002-01600	COVER,P.T.O.	1	1						
6	1	1E3002-01650	COVER,TRANSMISSION	1	1						
7	1	1E3002-01700-1	COVER R,FRONT	1	1						
8	1	1E3002-01750-1	COVER R	1	1						
9	1	1E3002-01830-1	COVER,VALVE	1	1						
10	1	1E6210-82580	FASTENER	2	2						
11	1	1E6020-83890	CLIP	1	1						
12	1	22137-080000	WASHER 8, POLISHED	1	1						
13	1	22217-080000	SPRING WASHER 8	1	1						
14	1	26016-080164	BOLT M 8X 16	3	3						
15	1	26018-060164	BOLT M 6X 16	1	1						
16	1	26018-060164	BOLT M 6X 16	2	2						
17	1	26018-060164	BOLT M 6X 16	4	4						
18	1	26018-080164	BOLT M 8X 16	3	3						
19	1	26018-080204	BOLT M 8X 20	4	4						
20	1	26018-080204	BOLT M 8X 20	2	2						
21	1	26022-050122	SCREW M 5X 12	4	4						
22	1	26117-080702	BOLT M 8X 70 PLATED	1	1						

Fig.4. VIBRATOR FRAME

4. VIBRATOR FRAME



OCNP2-G60100 4. VIBRATOR FRAME

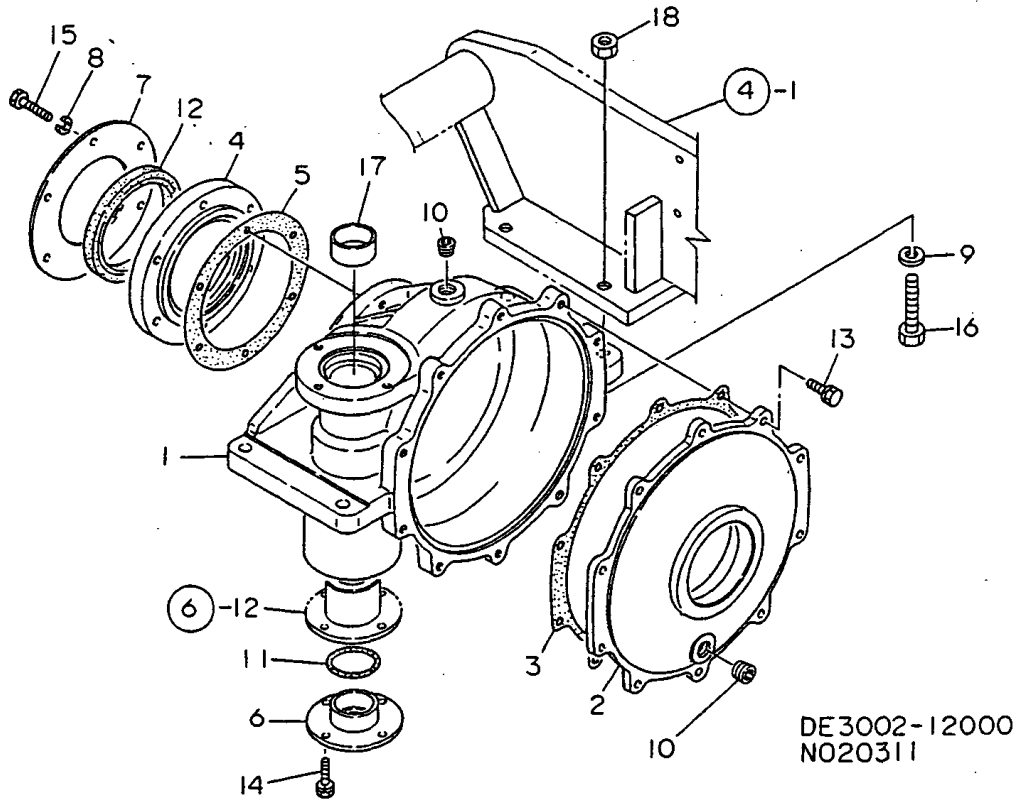
(A)=YMD60-EC
(B)=YMD60-N
(C)=

(D)=
(E)=
(F)=

REF.	LEV.	PARTS NO.	DESCRIPTION	QTY						I	R
				(A)	(B)	(C)	(D)	(E)	(F)		
1	1	1E3002-11010	FRAME,VIBRATOR	1	1						
2	1	1E3000-11250	PLATE A,LINK	1	1						
3	1	1E3000-11260	PLATE B,LINK	1	1						
4	1	1E3000-11290	PLATE C,LINK	1	1						
5	1	1E3000-11300	PLATE D,LINK	1	1						
6	1	1E3002-11450	PIN 25,HINGE	2	2						
7	1	1E3001-11470	NUT 25XP1.5	2	2						
8	1	1E3000-11900	SHAFT SUPPORT	2	2						
9	1	24761-010000	NIPPLE M6F, GREASE	2	2						
10	1	26013-080302	BOLT M 8X 30	8	8						
11	1	26717-060002	NUT M 6	4	4						
12	1	26979-060162	SCREW M 6X16	4	4						

Fig.5. REDUCTION GEAR CASE

5. REDUCTION GEAR CASE



OCNP2-G60100 5. REDUCTION GEAR CASE

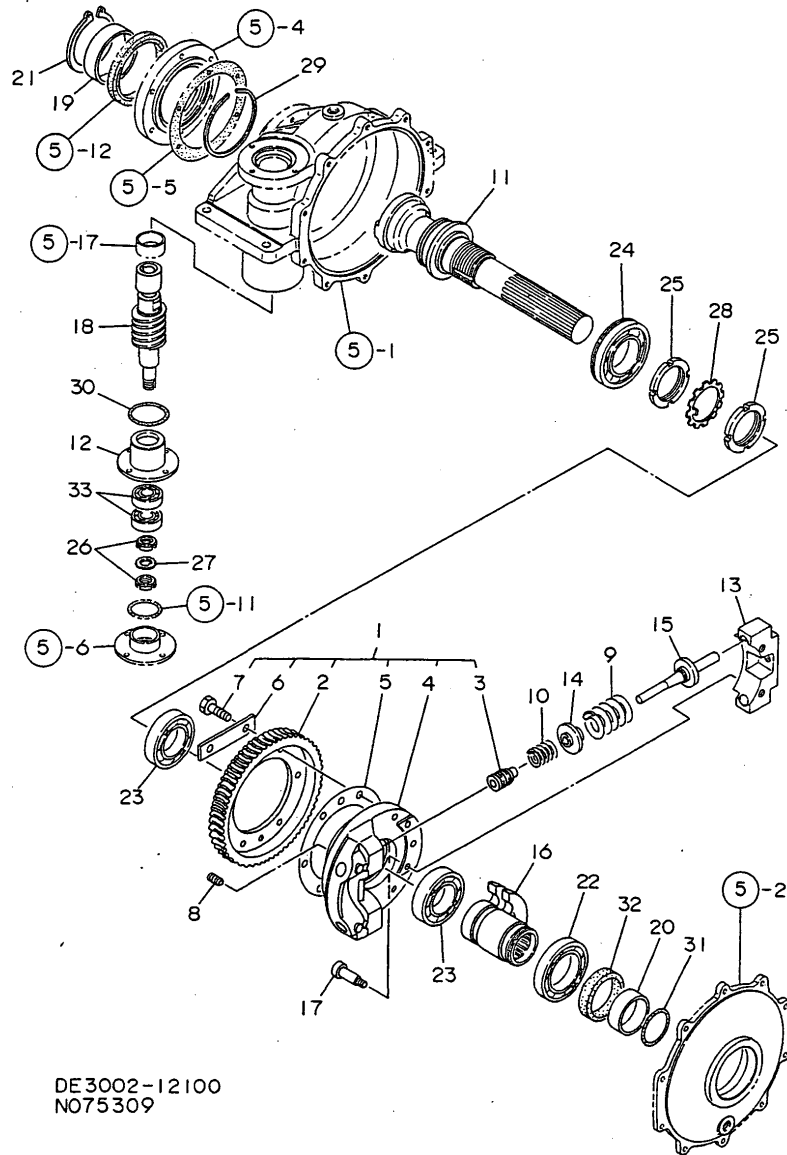
(A)=YMD60-EC
(B)=YMD60-N
(C)=

(D)=
(E)=
(F)=

REF.	LEV.	PARTS NO.	DESCRIPTION	QTY						I	R
				(A)	(B)	(C)	(D)	(E)	(F)		
1	1	1E3001-12010	CASE,REDUCTION	1	1						
2	1	1E3002-12020	COVER,REDUCTION CASE	1	1						
I	2-1	1E3002-12021	COVER,REDUCT.GR.CASE	1	1						N
		(A=F030051)	(B=F010051)								
3	1	1E3002-12030	CASE PACKING A	1	1						
4	1	1E3002-12050	COVER,REDUCT.CS.FRNT	1	1						
5	1	1E3002-12060	CASE PACKING B	1	1						
6	1	1E3001-12080	SHIFTER,REDUCT.CASE	1	1						
7	1	1E3001-12100	PLATE,SEAL KEEP	1	1						
8	1	22217-080000	SPRING WASHER 8	6	6						
9	1	22217-120000	WASHER 12,SPRING	4	4						
10	1	23871-030000	PLUG PT3/8,SCREW	2	2						
11	1	24321-000450	O-RING 1A G-45.0	1	1						
12	1	24421-952013	SEAL	1	1						
13	1	26013-080302	BOLT M 8X 30	10	10						
14	1	26013-080302	BOLT M 8X 30	4	4						
15	1	26116-080452	BOLT M 8X 45 PLATED	6	6						
16	1	26116-120554	BOLT, M12X55	4	4						
17	1	24550-040200	BUSH 40X20,DRY	1	1						
18	1	26716-120002	NUT M12	4	4						

Fig.6. REDUCTION TRANSMISSION

6. REDUCTION TRANSMISSION



DE3002-12100
NO75309

Remarks
(1) PLEASE PUT THE FACE OF PUNCH MARK OF MACHINE SERIAL NUMBER OF EACH BEARING TOGETHER WHEN ASSEMBLING.

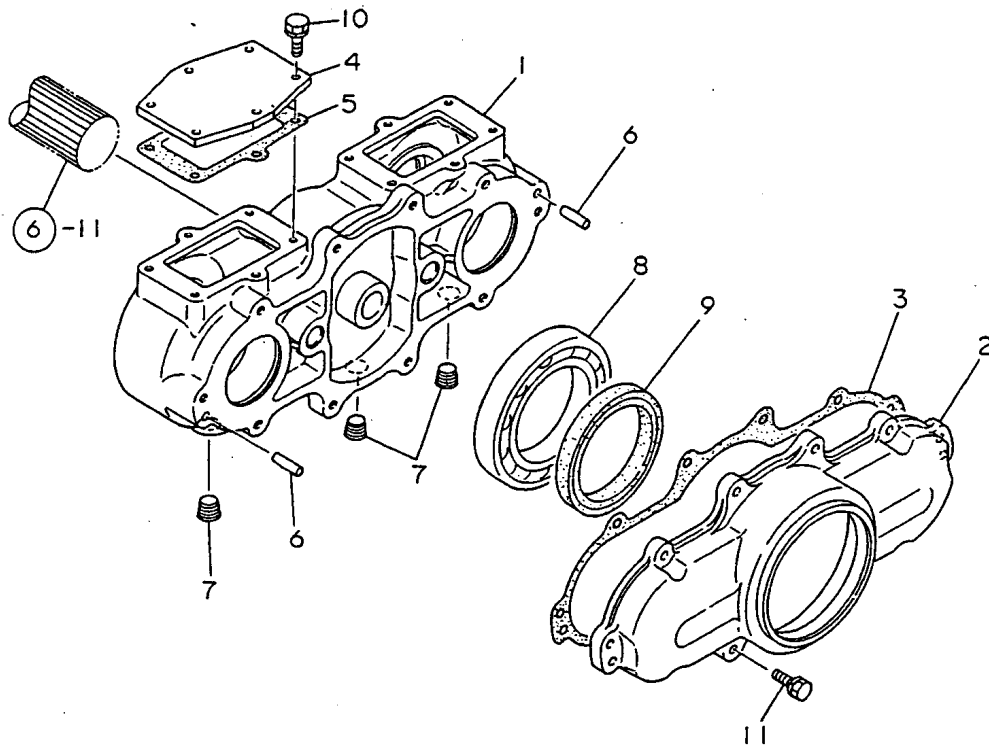
(A)=YMD60-EC
(B)=YMD60-N
(C)=

(D)=
(E)=
(F)=

REF.	LEV.	PARTS NO.	DESCRIPTION	QTY						I	R
				(A)	(B)	(C)	(D)	(E)	(F)		
1	1	1E3002-12000	WHEEL COMP.,WORM	1	1						
2	2	1E3001-12232	WHEEL,WORM	1	1						
3	2	1E3002-12270	BUSH B,GUIDE	2	2						
4	2	1E3002-12280	BRACKET,WORM WHEEL	1	1						
5	2	1E3001-12860	SHIM 190X139X0.2	1	1						
6	2	1E3001-12880	PLATE,LOCKING	3	3						
7	2	26116-100302	BOLT M10X 30 PLATED	6	6						
8	2	26979-080142	LOCK SCREW M 8X14	2	2						
9	1	1E3000-12120	COIL SPRING A	2	2						
10	1	1E3002-12130	SPRING B,COILED	2	2						
11	1	1E3002-12200	SHAFT,BLADE	1	1						
12	1	1E3001-12220	BEARING,WORM	1	1						
13	1	1E3002-12240	BRACKET	1	1						
14	1	1E3002-12260	BUSH A,GUIDE	2	2						
15	1	1E3002-12311	GUIDE PIN	2	2						
16	1	1E3002-12320	ARM,VALVE ROCKER	1	1						
I 16-1	1	1E3002-12300		1	1						N
		(A=F010098)	(B=F010092)								
17	1	1E3002-12370	BOLT M10X30,SHOULDER	2	2						
18	1	1E3001-12400	WORM COMPL.	1	1						
19	1	1E3002-12920	SLEEVE 909519,SI	1	1						
20	1	1E3002-12930	SLEEVE 707520,SI	1	1						
21	1	22242-000900	CIRCLIP 90	1	1						
22	1	24101-060144	BALL BEARING	1	1						
23	1	24101-062104	BALL BEARING	2	2						
24	1	24111-062124	BEARING 6212N	1	1						
25	1	24211-060002	LOCK NUT M60	2	2						
26	1	24217-020002	NUT	2	2						
27	1	24231-020000	WASHER 20	1	1						
28	1	24231-060000	WASHER 60	1	1						
29	1	24242-001100	RING,BRG.NR110 SNAP	1	1						
30	1	24321-000550	O-RING 1A G-55.0	1	1						
31	1	24321-000600	O-RING 1A G-60.0	1	1						
32	1	24421-750013	SEAL TC 750013, OIL	1	1						
33	1	24510-720414	BALL BEARING	2	2						1
I 34	1	1E3002-12390		1	1						W
		(A=F030139)	(B=F010118)								

Fig.7. VIBRATOR CASE

7. VIBRATOR CASE



OCNP2-G60100 7. VIBRATOR CASE

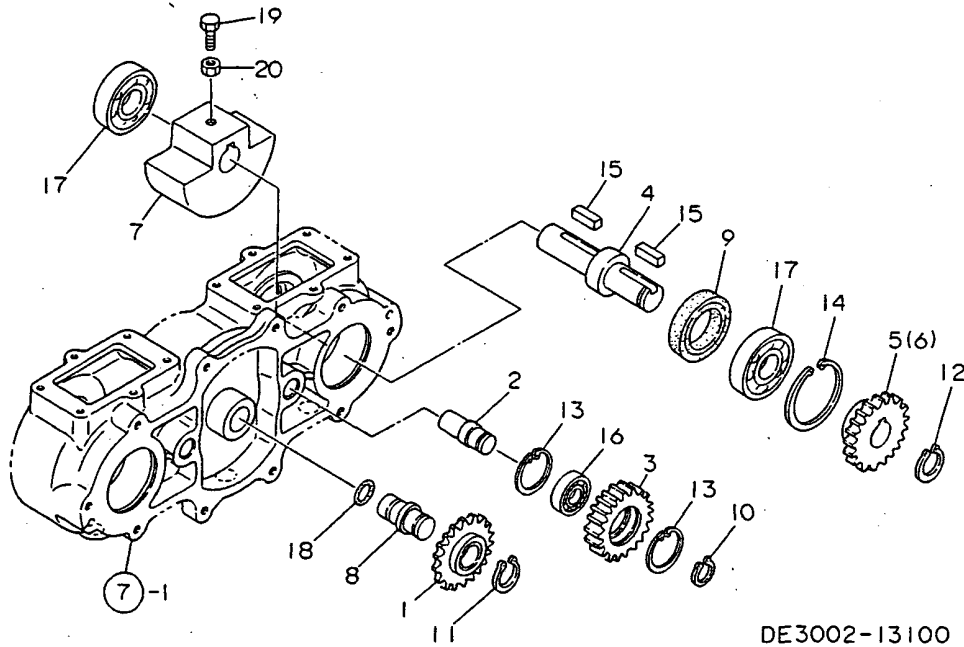
(A)=YMD60-EC
(B)=YMD60-N
(C)=

(D)=
(E)=
(F)=

REF.	LEV.	PARTS NO.	DESCRIPTION	QTY						I	R
				(A)	(B)	(C)	(D)	(E)	(F)		
1	1	1E3002-13010	CASE COMP.,VIBRATOR	1	1						
2	1	1E3002-13050	COVER,VIBRATOR CASE	1	1						
3	1	1E3002-13060	PACKING,VIBRATOR	1	1						
4	1	1E3002-13110	COVER,CASE B	2	2						
5	1	1E3002-13120	PACKING,CASE B	2	2						
6	1	1A1040-26060	PIN 8X28, STRAIGHT	2	2						
7	1	23871-030000	PLUG PT3/8,SCREW	3	3						
8	1	24101-060174	BALL BEARING	1	1						
9	1	24423-851013	SEAL TC851013, OIL	1	1						
10	1	26013-060122	BOLT M 6X 12	12	12						
11	1	26013-080252	BOLT M 8X 25	10	10						

Fig.8. VIBRATOR

8. VIBRATOR



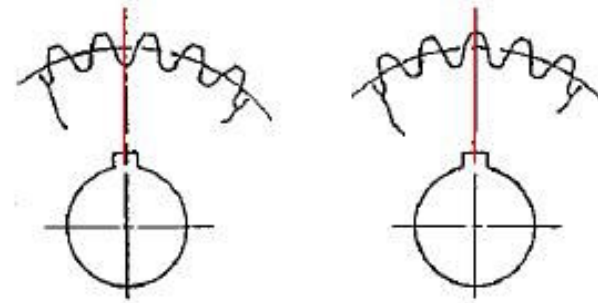
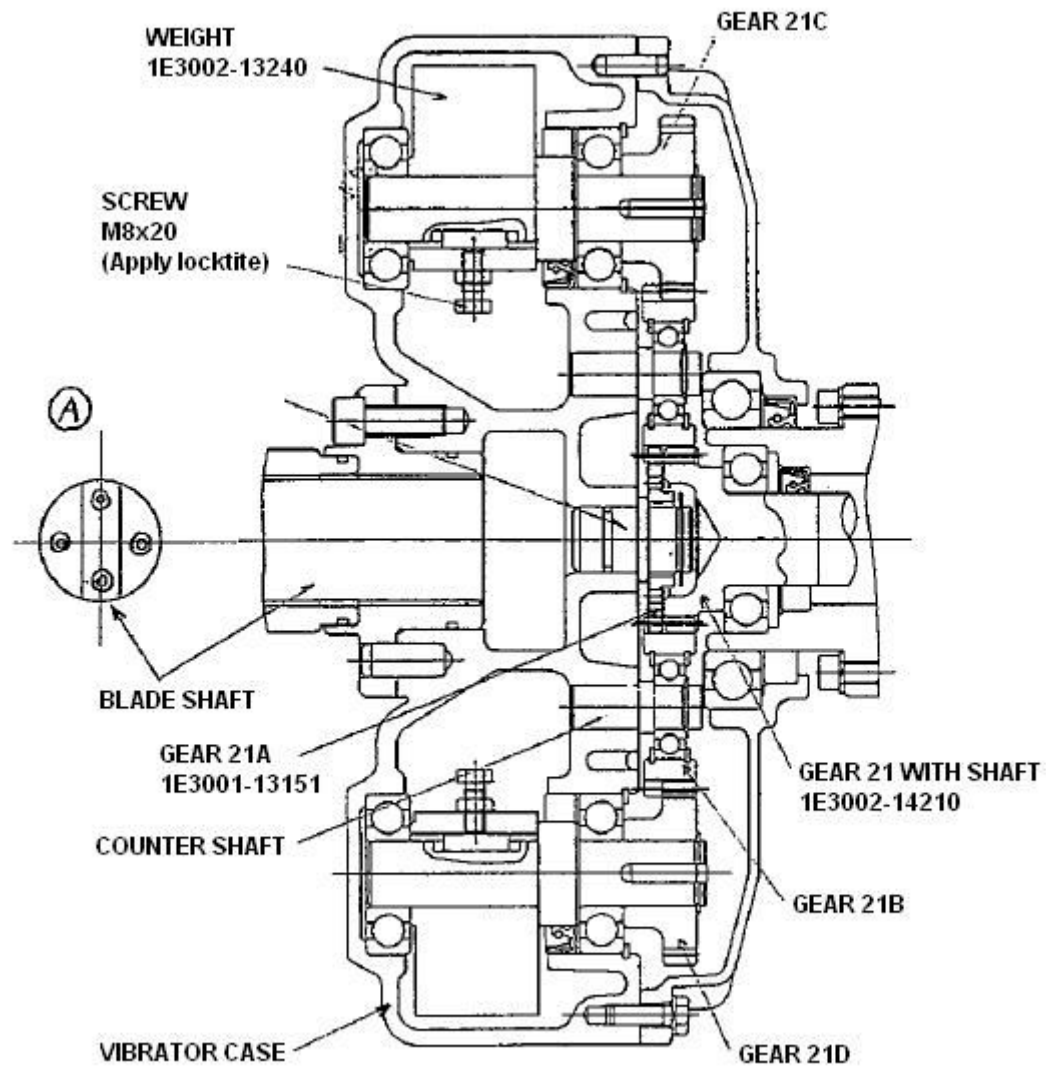
DE3002-13100
NO75311

OCNP2-G60100 8. VIBRATOR

(A)=YMD60-EC
(B)=YMD60-N
(C)=

(D)=
(E)=
(F)=

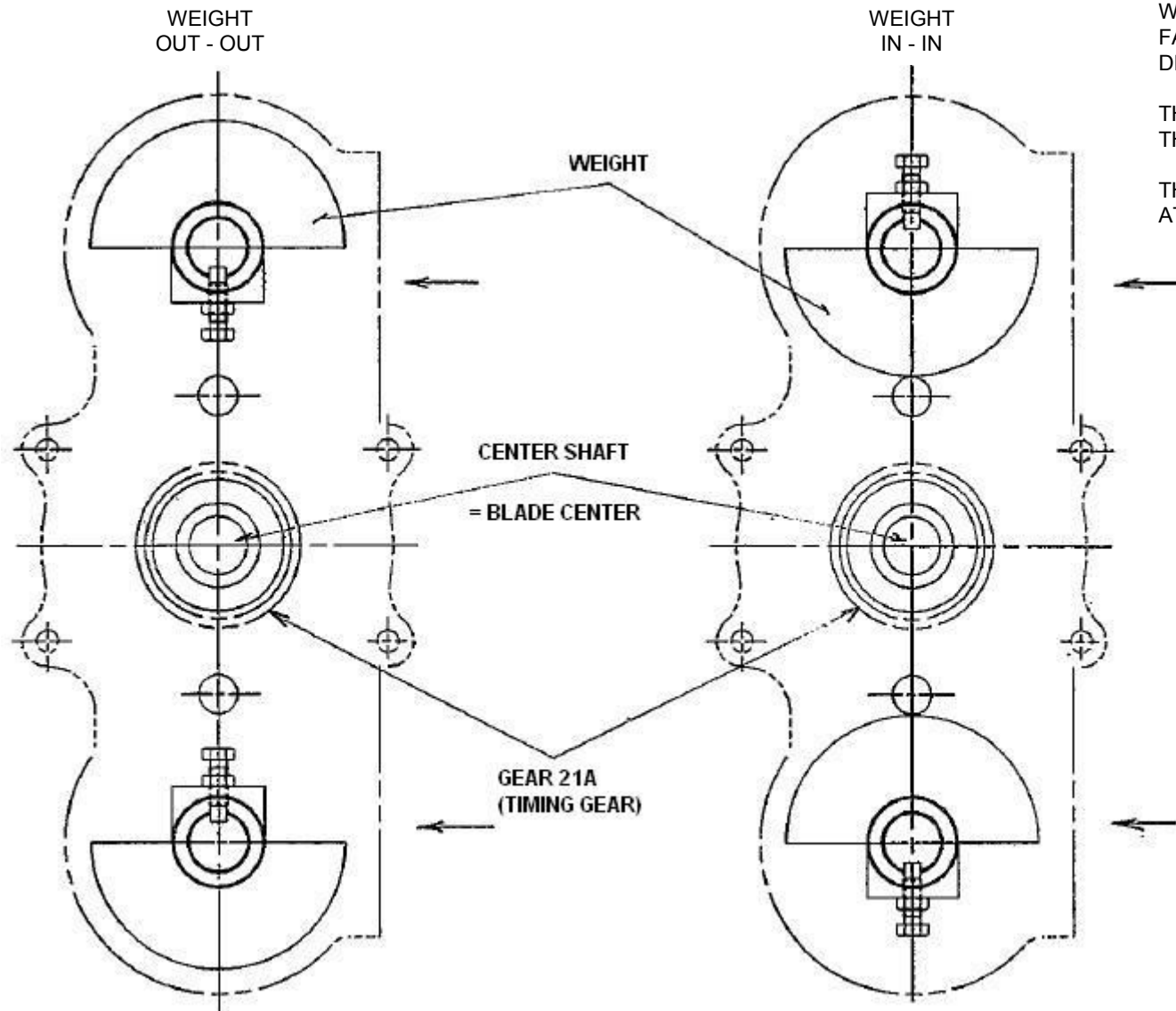
REF.	LEV.	PARTS NO.	DESCRIPTION	QTY						I	R
				(A)	(B)	(C)	(D)	(E)	(F)		
1	1	1E3001-13151	GEAR 21A	1	1						
2	1	1E3002-13170	SHAFT,COUNTER	2	2						
3	1	1E3002-13190	GEAR 21B	2	2						
4	1	1E3001-13200	SHAFT,VIBRATOR	2	2						
5	1	1E3001-13210	GEAR 21C	1	1						
6	1	1E3001-13220	GEAR 21D	1	1						
7	1	1E3002-13240	ELEMENT,ECCENTRIC	2	2						
8	1	1E3002-13260	SHAFT,CENTER	1	1						
I	8-1	1E3002-13261	SHAFT,CENTER	1	1						R
		(A=F030139)	(B=F010118)								
9	1	1D4100-32570	SEAL SC406211,OIL	2	2						
10	1	22242-000170	CIRCLIP 17	2	2						
11	1	22242-000250	CIRCLIP 25S	1	1						
12	1	22242-000250	CIRCLIP 25S	2	2						
13	1	22252-000400	CIRCLIP 40	4	4						
14	1	22252-000621	CIRCLIP 62	2	2						
15	1	22551-070250	KEY 7X25	4	4						
16	1	24101-062034	BALL BEARING	2	2						
17	1	24101-063054	BEARING #6305	4	4						
18	1	24311-000210	O-RING 1A P-21.0	1	1						
19	1	26116-080202	BOLT M 8X 20 PLATED	2	2						
20	1	26797-080002	LOCK NUT M 8	2	2						



GEAR C

GEAR D

DIFFERENCE OF GEAR C AND GEAR D



WEIGHT SHOULD BE INSTALLED AT FACE TO FACE POSITION AS SHOWN IN THE DRAWING. (IN-IN OR OUT-OUT)

THE TIMING IS FIXED BY THE INSTALLATION OF THE GEAR 21A (1E3001-13151)

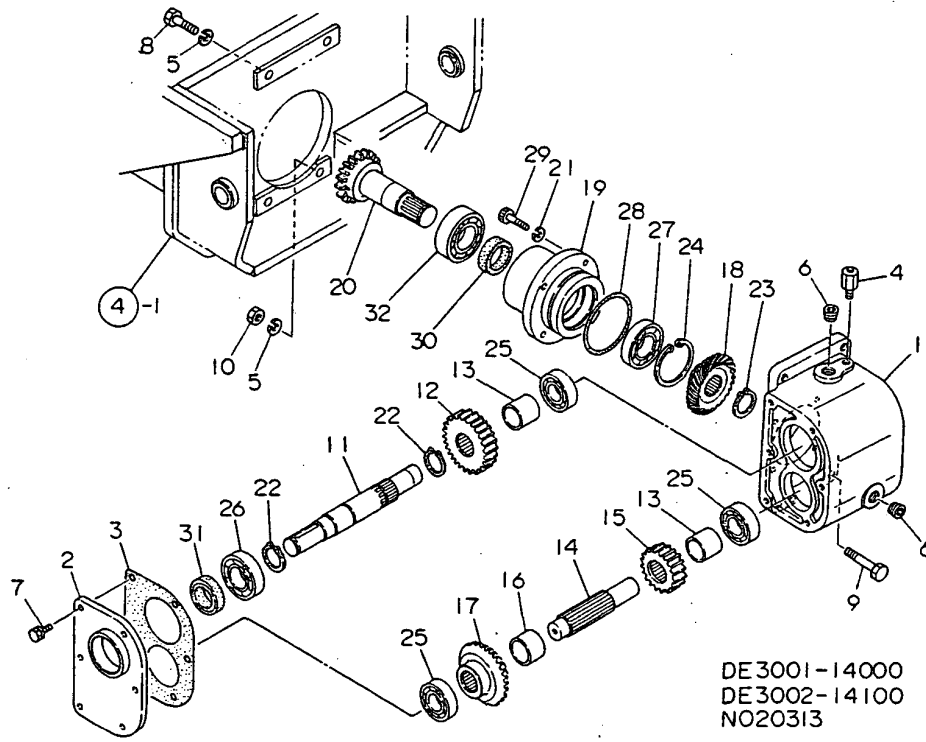
THE POSITION OF WEIGHT CAN BE CHECKED AT THE HOLE OF COVER, CASE B (1E3002-13110).

Fig.9. OVERDRIVE GEAR CASE

(A)=YMD60-EC
(B)=YMD60-N
(C)=

(D)=
(E)=
(F)=

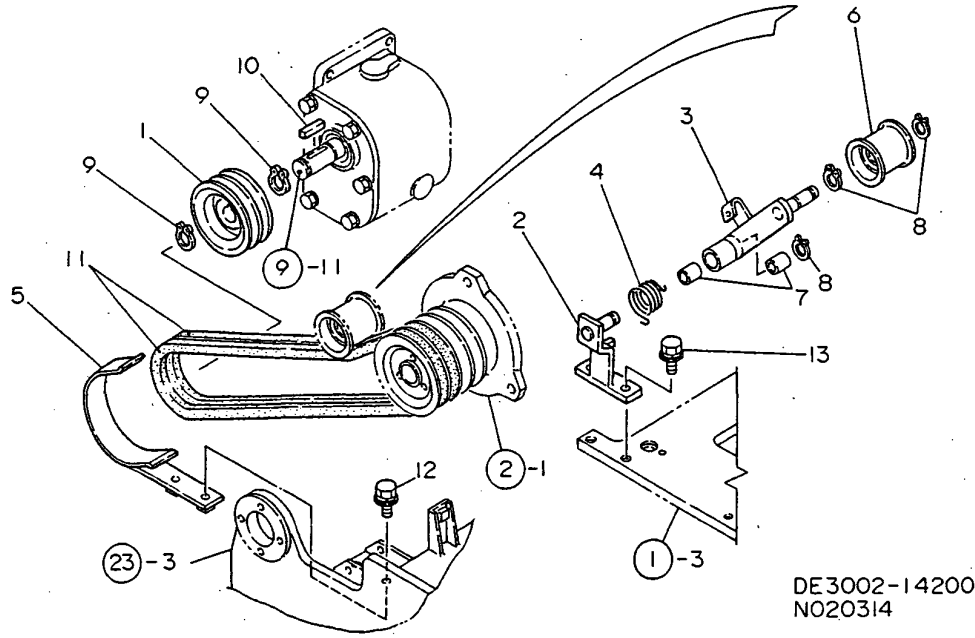
9. OVERDRIVE GEAR CASE



REF.	LEV.	PARTS NO.	DESCRIPTION	QTY						I	R
				(A)	(B)	(C)	(D)	(E)	(F)		
1	1	1E3001-14010	CASE,SPEED-UP	1	1						
2	1	1E3001-14020	COVER,SPEED-UP CASE	1	1						
3	1	1E3001-14030	CASE PACKING	1	1						
4	1	1A1650-21080	BREATHER 1/8	1	1						
5	1	22217-100000	SPRING WASHER 10	4	4						
6	1	23871-030000	PLUG PT3/8,SCREW	2	2						
7	1	26013-080202	BOLT W/WASHER M8X20	6	6						
8	1	26116-100402	BOLT M10X 40 PLATED	3	3						
9	1	26116-100502	BOLT M10X 50 PLATED	1	1						
10	1	26717-100002	NUT M10	1	1						
11	1	1E3001-14100	SHAFT,P.T.O.1ST	1	1						
12	1	1E3001-14110	GEAR 30	1	1						
13	1	1E3001-14120	COLLAR 27.6X34X30	2	2						
14	1	1E3001-14140	SHAFT,P.T.O.2ND	1	1						
15	1	1E3001-14150	GEAR 22	1	1						
16	1	1E3001-14160	COLLAR 31.1X38.1X26	1	1						
17	1	1E3001-14170	BEVEL 33L,SPIRAL	1	1						
18	1	1E3001-14180	BEVEL 33R,SPIRAL	1	1						
19	1	1E3002-14200	BRACKET,BEARING	1	1						
20	1	1E3002-14210	GEAR 21	1	1						
21	1	22217-080000	SPRING WASHER 8	4	4						
22	1	22242-000300	CIRCLIP 30	2	2						
23	1	22242-000300	CIRCLIP 30	1	1						
24	1	22252-000621	CIRCLIP 62	1	1						
25	1	24101-062054	BEARING #6205	3	3						
26	1	24101-062064	BALL BEARING	1	1						
27	1	24101-062064	BALL BEARING	1	1						
28	1	24321-000800	O-RING 1A G-80.0	1	1						
29	1	26450-080302	BOLT M 8X 30	4	4						
30	1	1E3002-14800	SEAL TC355511,OIL	1	1						
31	1	1E3001-14900	OIL SEAL TC305011	1	1						
32	1	24101-062074	BALL BEARING	1	1						

Fig.10. P.T.O. DRIVE

10. P.T.O. DRIVE



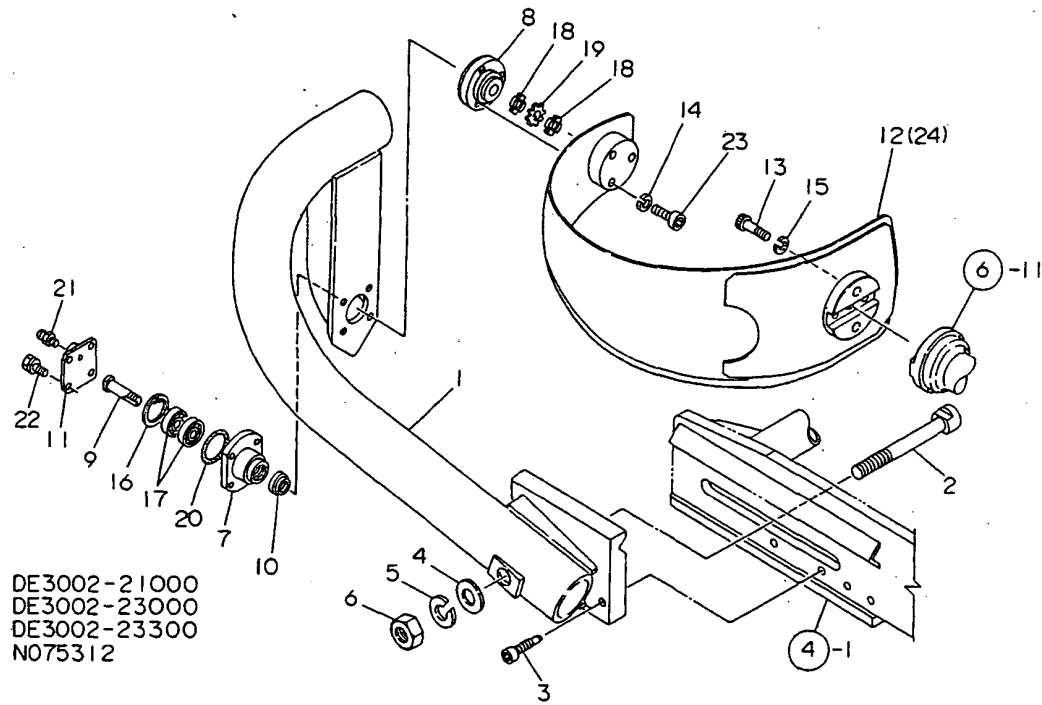
(A)=YMD60-EC
(B)=YMD60-N
(C)=

(D)=
(E)=
(F)=

REF.	LEV.	PARTS NO.	DESCRIPTION	QTY						I	R
				(A)	(B)	(C)	(D)	(E)	(F)		
1	1	1E1030-11070	PULLEY 100B	1	1						
2	1	1E3002-15050	SEAT 1,TENSION	1	1						
3	1	1E3002-15100	ARM 1,TENSION	1	1						
4	1	1E3001-15150	SPRING R	1	1						
5	1	1E3002-15200	GUARD,P.T.O.BELT	1	1						
6	1	7E6150-51500	ROLLER, TENSION	1	1						
7	1	24550-015100	BUSH 15X10	2	2						
8	1	22242-000150	CIRCLIP 15	3	3						
9	1	22242-000250	CIRCLIP 25S	2	2						
10	1	22551-070350	KEY 7X35	1	1						
11	1	25123-004600	V-BELT	2	2						
12	1	26018-080164	BOLT M 8X 16	2	2						
13	1	26018-080204	BOLT M 8X 20	2	2						

Fig.11. BLADE

11. BLADE



DE3002-21000
DE3002-23000
DE3002-23300
NO75312

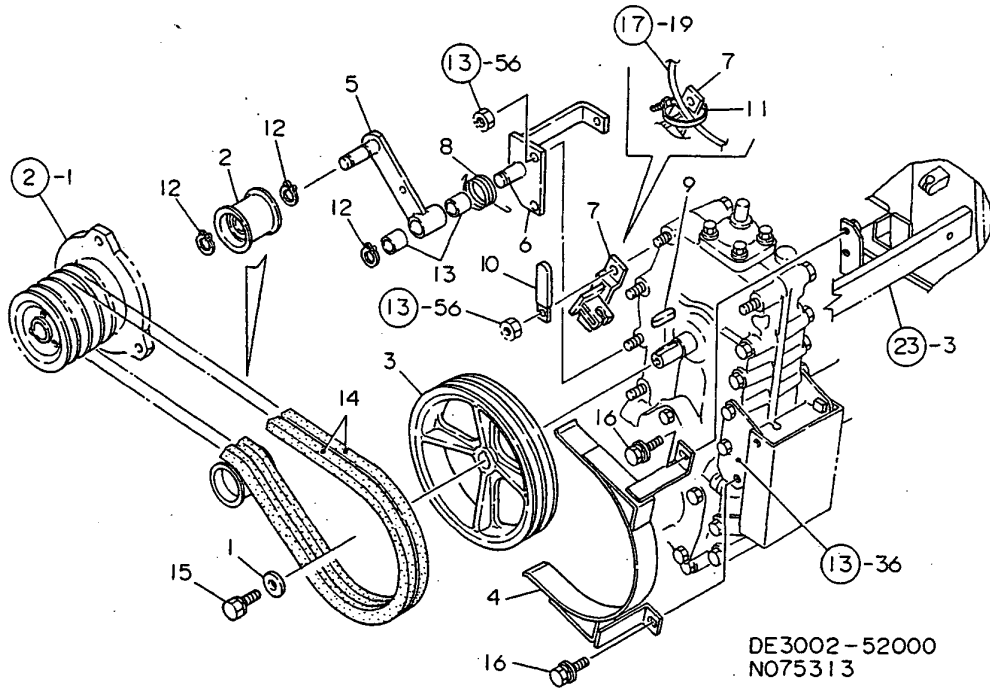
(A)=YMD60-EC
(B)=YMD60-N
(C)=

(D)=
(E)=
(F)=

REF.	LEV.	PARTS NO.	DESCRIPTION	QTY						I	R
				(A)	(B)	(C)	(D)	(E)	(F)		
1	1	1E3002-21000	FRAME, BLADE	1	1						
I	1-1	1E3002-21001	FRAME, BLADE	1	1						N
		(A=F030165) (B=F010136)									
2	1	1E3002-21280	BOLT, CLAMPING	1	1						
3	1	1E3002-21300	BOLT M12X50, GUIDE	1	1						
4	1	22137-240000	WASHER 24, POLISHED	1	1						
5	1	22217-240000	SPRING WASHER 24	1	1						
6	1	26737-240002	NUT M24	1	1						
7	1	1E3002-23130	HOLDER, BEARING	1	1						
8	1	1E3002-23151	FRANGE, BLADE	1	1						
9	1	1E3002-23160	PIN 17, HINGE	1	1						
10	1	1E3002-23180	SCRAPER 2531, SER.	1	1						
11	1	1E3002-23200	COVER, HOLDER	1	1						
12	1	1E3002-23300	BLADE 500	1	1						
I	12-1	1E3002-23301	BLADE 500	1	1						N
		(A=FXXXXXX) (B=FXXXXXX)									
I	12-2	1E3002-23302	BLADE 500	1	1						N
		(A=F030165) (B=F010136)									
13	1	1E3000-23900	BOLT 12X45, HEX. SH.	4	4						
14	1	22217-080000	SPRING WASHER 8	3	3						
15	1	22217-120000	WASHER 12, SPRING	4	4						
16	1	22252-000400	CIRCLIP 40	1	1						
17	1	24101-062030	BALL BEARING	2	2						
18	1	24211-017002	LOCK NUT M17	2	2						
19	1	24231-017000	WASHER 17	1	1						
20	1	24321-000500	O-RING 1A G-50.0	1	1						
21	1	24761-060000	NIPPLE MT6X1, GREASE	1	1						
22	1	26013-080252	BOLT M 8X 25	4	4						
23	1	26450-080302	BOLT M 8X 30	3	3						
24	1	1E3002-23050	BLADE 600	1	1						
I	24-1	1E3002-23051	BLADE 600	1	1						N
		(A=FXXXXXX) (B=FXXXXXX)									
I	24-2	1E3002-23052	BLADE 600	1	1						N
		(A=F030165) (B=F010136)									

Fig.12. TRAVEL CLUTCH

12. TRAVEL CLUTCH



OCNP2-G60100 12. TRAVEL CLUTCH

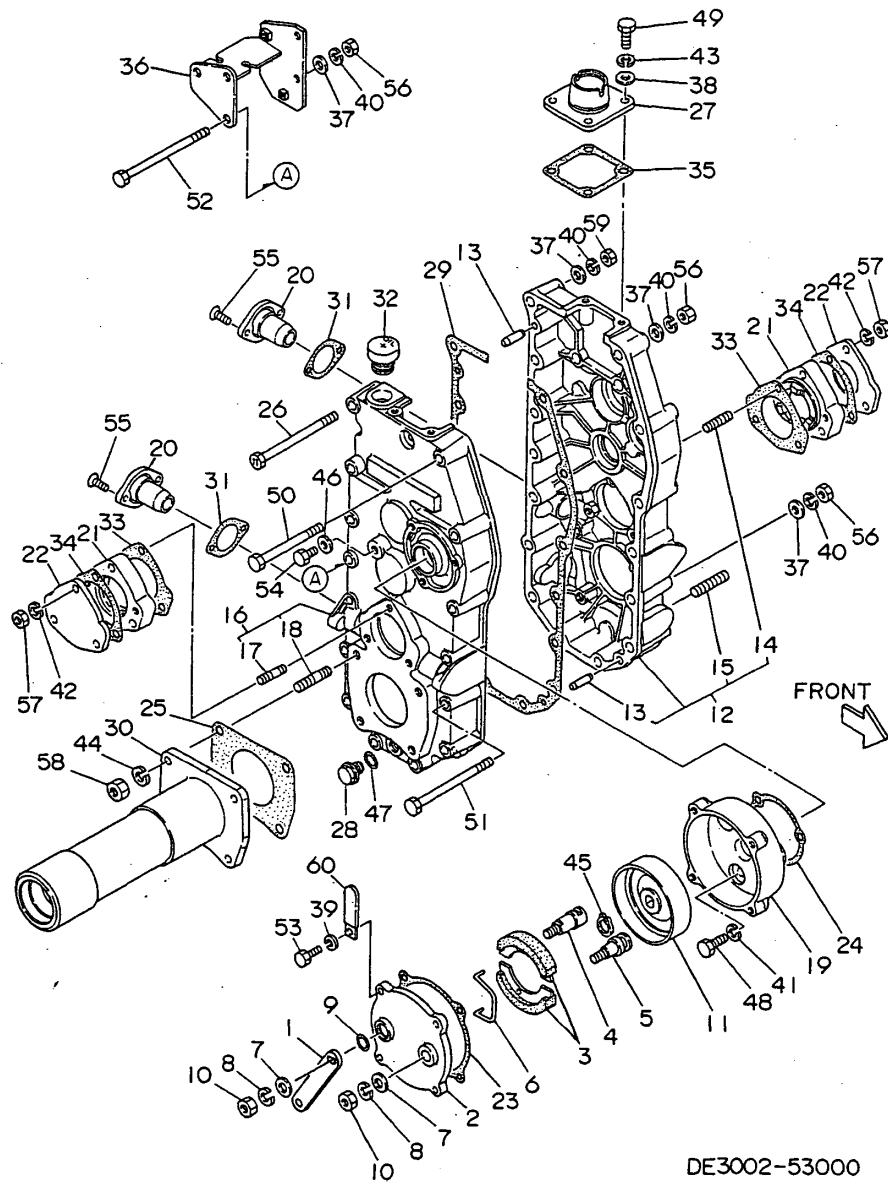
(A)=YMD60-EC
(B)=YMD60-N
(C)=

(D)=
(E)=
(F)=

REF.	LEV.	PARTS NO.	DESCRIPTION	QTY						I	R
				(A)	(B)	(C)	(D)	(E)	(F)		
1	1	1E6020-25340	SPACER 9X28X4.5	1	1						
2	1	7E6150-51500	ROLLER, TENSION	1	1						
3	1	1E3001-52000	PULLEY 211-B2	1	1						
4	1	1E3002-52010	RETAINER, TRANSM. BELT	1	1						
5	1	1E3001-52050	ARM 2, TENSION	1	1						
6	1	1E3002-52100	SEAT, TRAVEL TENSION	1	1						
7	1	1E3001-52120	BRACKET, WIRE	1	1						
8	1	1E3001-52170	SPRING L	1	1						
9	1	1E4070-79020	KEY 5X5X30	1	1						
10	1	1E6020-83890	CLIP	1	1						
11	1	1E6150-83910	BAND 195	1	1						
12	1	22242-000150	CIRCLIP 15	3	3						
13	1	24550-015100	BUSH 15X10	2	2						
14	1	25123-005801	V-BELT	2	2						
15	1	26013-080202	BOLT W/WASHER M8X20	1	1						
16	1	26018-080204	BOLT M 8 X 20	2	2						

Fig.13. TRANSMISSION CASE

13. TRANSMISSION CASE



DE3002-53000
NO20317

Remarks
* 7E3002-53000 TRANSMISSION ASSY

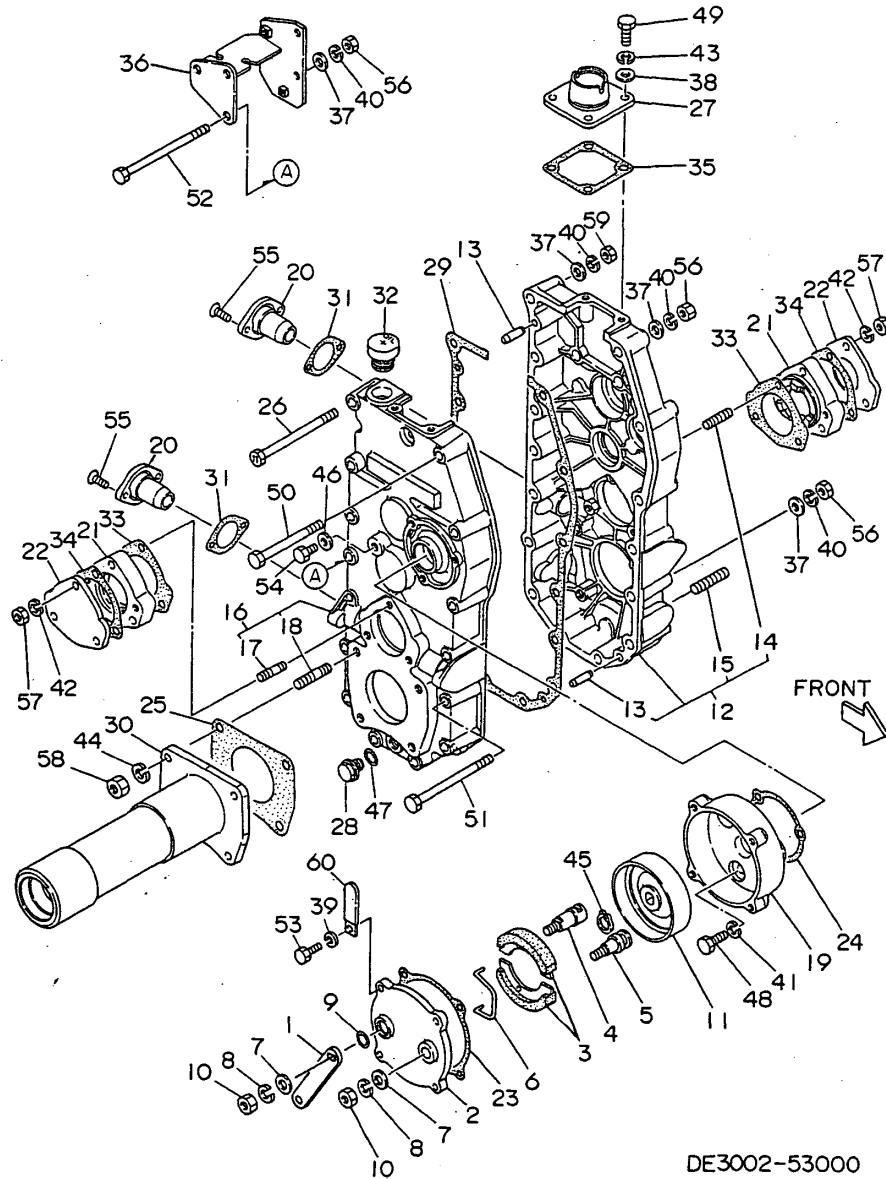
(A)=YMD60-EC
(B)=YMD60-N
(C)=

(D)=
(E)=
(F)=

REF.	LEV.	PARTS NO.	DESCRIPTION	QTY						I	R
				(A)	(B)	(C)	(D)	(E)	(F)		
1	1	1N1070-24811	ARM,BRAKE	1	1						
2	1	1E6140-52210	COVER,P BRAKE	1	1						
3	1	1E6140-52240	BRAKE SHOE, PARKING	2	2						
4	1	1E6140-52260	CAM SHAFT,PARK.BRAKE	1	1						
5	1	1E6140-52270	ANCHOR PIN, P.BRAKE	1	1						
6	1	1E6140-52280	RETURN SPRING,B.SHOE	1	1						
7	1	22137-100000	WASHER 10,POLISHED	2	2						
8	1	22217-100000	SPRING WASHER 10	2	2						
9	1	24311-000140	O-RING 1A P-14.0	1	1						
10	1	26717-100002	NUT M10	2	2						
11	1	1N1070-24750	BRAKE DRUM	1	1						
12	1	1E3001-53200	CASE R,TRANSMISSION	1	1						
I 12-1	1	1E3001-53201	CASE R,TRANSMISSION	1	1						N
		(A=F010099) (B=F030109)									
13	2	1A1040-26060	PIN 8X28, STRAIGHT	2	2						
14	2	26216-080352	STUD M 8X 35 PLATED	3	3						
15	2	26226-100302	STUD M10X 30 PLATED	4	4						
16	1	1E3001-53150	CASE L,TRANSMISSION	1	1						
I 16-1	1	1E3001-53151	CASE L,TRANSMISSION	1	1						N
		(A=F010099) (B=F030109)									
17	2	26216-080352	STUD M 8X 35 PLATED	3	3						
18	2	26226-100302	STUD M10X 30 PLATED	4	4						
19	1	1N1070-24300	CASE,BRAKE	1	1						
20	1	1N1070-24430	BRACKET,SIDE CLUTCH	2	2						
21	1	1N1070-24451	COVER,PAWL	2	2						
22	1	1N1070-24480	COVER,4TH SHFT.BRG.	2	2						
23	1	1N1070-24510	PACKING,BRAKE CAP	1	1						
24	1	1N1070-24520	PACKING,BRAKE CASE	1	1						
25	1	1N1070-24530	PACKING,AXLE CASE	2	2						
26	1	1N1070-24910	BOLT 8X110 11T	1	1						
27	1	1E4030-27350	RETAINER, LEVER	1	1						
28	1	1A1070-28690	PLUG 14, OIL	1	1						
29	1	1E6320-53030	PACKING, TRANSM.CASE	1	1						
30	1	1E3001-53040	CASE,AXLE	2	2						
31	1	1E6150-53141	PACKING,SIDE CLUTCH	2	2						
32	1	1E6071-53360	COVER 35,OILING	1	1						
33	1	1E6250-53740	PACKING COVER W/PAWL	2	2						
34	1	1E6320-53740	PACKING, COVER W/PAW	2	2						
35	1	1E6150-56030	PACKING, RETAINER	1	1						
36	1	1E3002-56350	BRACKET,SD.CLTCH.OUT	1	1						
37	1	22137-080000	WASHER 8, POLISHED	15	15						
38	1	22137-080000	WASHER 8, POLISHED	4	4						
39	1	22217-060000	SPRING WASHER 6	4	4						
40	1	22217-080000	SPRING WASHER 8	15	15						
41	1	22217-080000	SPRING WASHER 8	3	3						
42	1	22217-080000	SPRING WASHER 8	6	6						
43	1	22217-080000	SPRING WASHER 8	4	4						
44	1	22217-100000	SPRING WASHER 10	8	8						
45	1	22242-000160	CIRCLIP 16	1	1						
46	1	23414-080000	GASKET 8, ROUND	1	1						
47	1	24311-000160	O-RING 1A P-16.0	1	1						

Fig.13. TRANSMISSION CASE

13. TRANSMISSION CASE



DE3002-53000
N020317

Remarks
* 7E3002-53000 TRANSMISSION ASSY

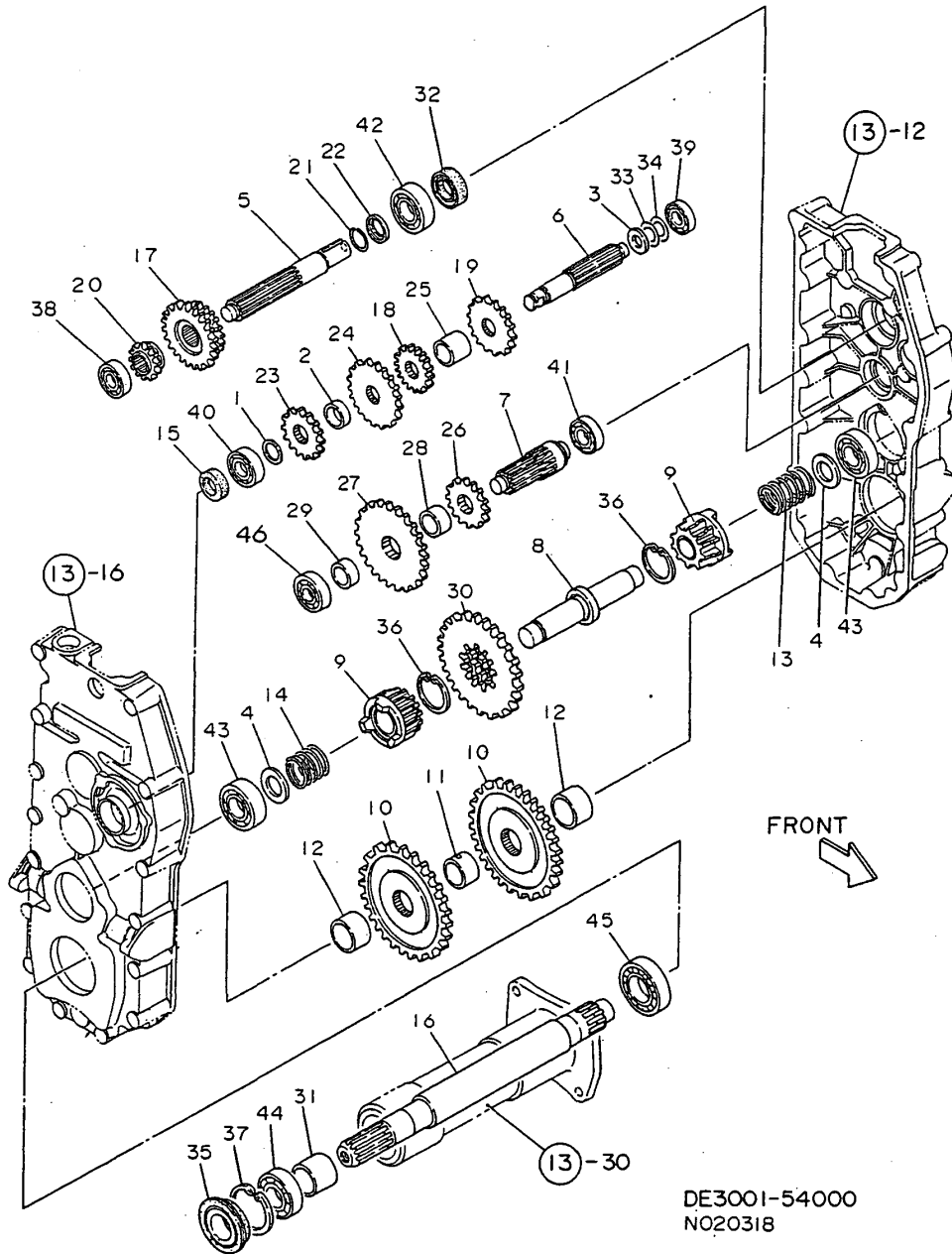
(A)=YMD60-EC
(B)=YMD60-N
(C)=

(D)=
(E)=
(F)=

REF.	LEV.	PARTS NO.	DESCRIPTION	QTY						I	R
				(A)	(B)	(C)	(D)	(E)	(F)		
48	1	26116-080202	BOLT M 8X 20 PLATED	3	3						
49	1	26116-080202	BOLT M 8X 20 PLATED	4	4						
50	1	26116-080902	BOLT M 8X 90 PLATED	1	1						
51	1	26116-081102	BOLT M 8X110 PLATED	9	9						
52	1	26116-081202	BOLT M 8X120 PLATED	4	4						
53	1	26117-060202	BOLT M 6X 20 PLATED	4	4						
54	1	26117-080162	BOLT M 8X 16 PLATED	1	1						
55	1	26577-060162	SCREW M 6X 16	4	4						
56	1	26717-080002	NUT M 8	14	14						
57	1	26717-080002	NUT M 8	6	6						
58	1	26717-100002	NUT M10	8	8						
59	1	26756-080002	LOCK NUT M 8 PLATED	1	1						
60	1	1E6020-83890	CLIP	1	1						

Fig.14. TRANSMISSION INTERIOR

14. TRANSMISSION INTERIOR



DE3001-54000
N020318

OCNP2-G60100 14. TRANSMISSION INTERIOR

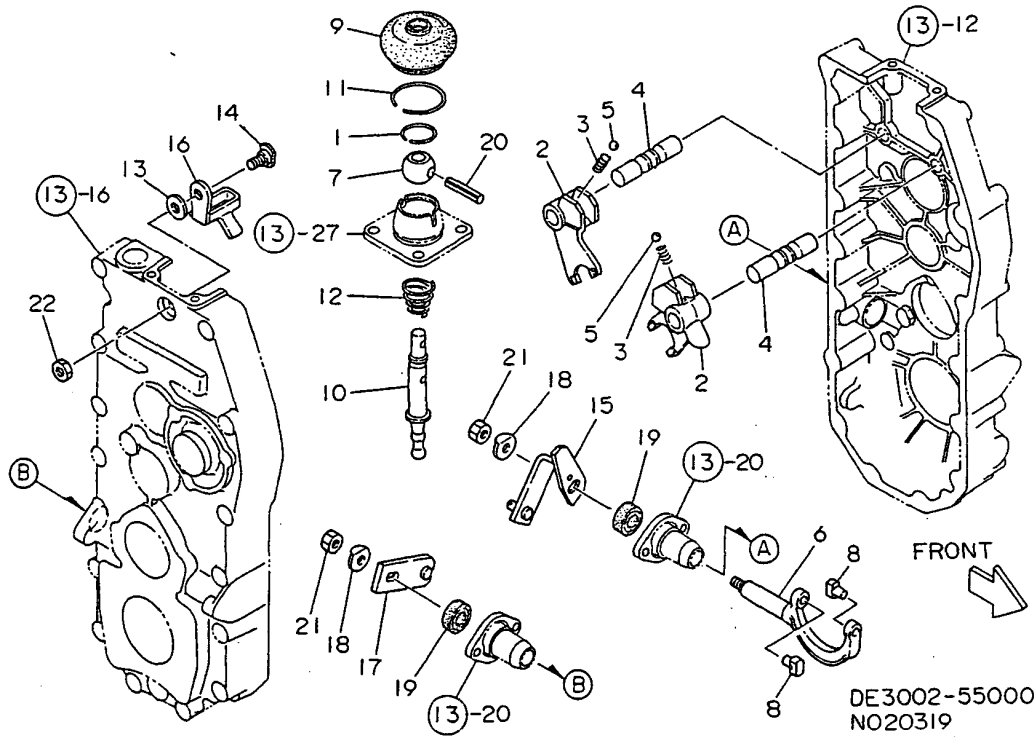
(A)=YMD60-EC
(B)=YMD60-N
(C)=

(D)=
(E)=
(F)=

REF.	LEV.	PARTS NO.	DESCRIPTION	QTY						I	R
				(A)	(B)	(C)	(D)	(E)	(F)		
1	1	1E4070-14040	LINER 17.1X25X1	1	1						
2	1	1E4030-24040	COLLAR,MAIN SHAFT	1	1						
3	1	1E4030-24150	LINER 15	1	1						
I	3-1	1 1E4130-74010 (A=*2008.09.) (B=*2008.09.)	LINER 15.2X24X1	1	1						R
4	1	192010-24160	LINER 20	2	2						
5	1	1N1070-25010	SHAFT,MAIN	1	1						
6	1	1N1070-25020	SHAFT,2ND	1	1						
7	1	1N1070-25031	SHAFT,3RD	1	1						
8	1	1N1070-25041	SHAFT,4TH	1	1						
9	1	1N1070-25181	RATCHET 14,4TH SHAFT	2	2						
10	1	1N1070-25210	GEAR 41,AXLE	2	2						
11	1	1N1070-25350	COLLAR 25.5X34X25	1	1						
12	1	1N1070-25360	COLLAR 31.1X38.1X24	2	2						
13	1	1N1070-25450	SPRING L	1	1						
14	1	1N1070-25460	SPRING R	1	1						
15	1	1A1120-28130	OIL SEAL TC17328	1	1						
16	1	1E3001-53060	AXLE	2	2						
17	1	1E3001-53070	GEAR 21-28,SLIDE	1	1						
18	1	1E3001-53080	GEAR 14,2ND SHAFT	1	1						
19	1	1E3001-53090	GEAR 21,2ND SHAFT	1	1						
20	1	1E6070-54030	GEAR 15,MN.SHFT.SLD.	1	1						
21	1	1E6070-54060	CIRCLIP 20	1	1						
22	1	1E6070-54070	RETAINER,CIRCLIP	1	1						
23	1	1E6070-54091	GEAR 20, 2ND SHAFT	1	1						
24	1	1E6070-54110	GEAR 28, 2ND SHAFT	1	1						
25	1	1E6070-54140	COLLAR 22.6X27.2X25	1	1						
26	1	1E6150-54210	GEAR 14, 3RD SHAFT	1	1						
27	1	1E6071-54220	GEAR 36, 3RD SHAFT	1	1						
28	1	1E6070-54230	COLLAR 25.5X30X14	1	1						
29	1	1E6070-54240	COLLAR 18.2X28X8	1	1						
30	1	1E6150-54370	GEAR 35, 4TH SHAFT	1	1						
31	1	1E6070-54410	COLLAR	2	2						
32	1	1E6070-54460	OIL SEAL TC20407	1	1						
33	1	1E6070-54610	SHIM 17.5X25X0.3	1	1						
34	1	1E6070-54610	SHIM 17.5X25X0.3	1	1						
35	1	1E6140-73420	SEAL QLF255218, OIL	2	2						
36	1	22252-000421	CIRCLIP 42	2	2						
37	1	22252-000521	CIRCLIP 52	2	2						
38	1	24101-062024	BALL BEARING	1	1						
39	1	24101-062024	BALL BEARING	1	1						
40	1	24101-062034	BALL BEARING	1	1						
41	1	24101-062034	BALL BEARING	1	1						
42	1	24101-062044	BALL BEARING #6204	1	1						
43	1	24101-062044	BALL BEARING #6204	2	2						
44	1	24101-062054	BEARING #6205	2	2						
45	1	24101-062064	BALL BEARING 6206	2	2						
46	1	24101-063034	BALL BEARING	1	1						

Fig.15. SPEED CHANGE

15. SPEED CHANGE



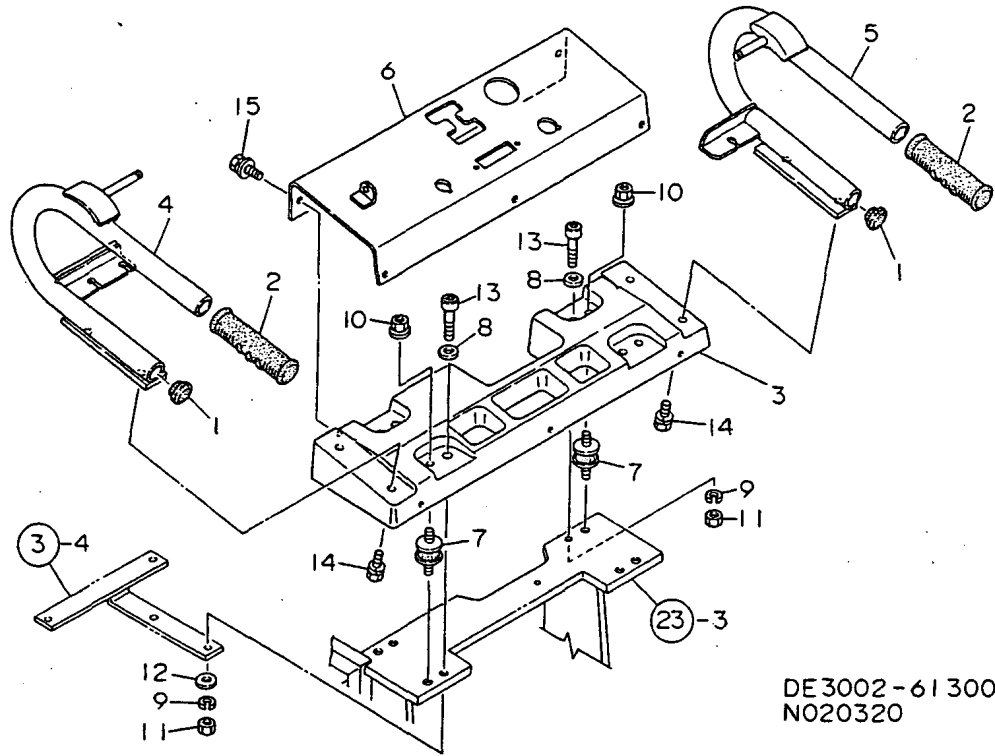
(A)=YMD60-EC
(B)=YMD60-N
(C)=

(D)=
(E)=
(F)=

REF.	LEV.	PARTS NO.	DESCRIPTION	QTY						I	R
				(A)	(B)	(C)	(D)	(E)	(F)		
1	1	1A1040-26320	CIRCLIP 30-H	1	1						
2	1	1N1070-26410	FORK,CHANGE	2	2						
3	1	1A1040-26750	SPRING, FORK	2	2						
4	1	1E6150-56010	SHAFT,FORK	2	2						
5	1	24190-100001	BALL 5/16, STEEL	2	2						
6	1	1N1070-26451	BODY,SD.CLUTCH FORK	2	2						
7	1	1E4030-27340	BALL, CHANGE SHIFTER	1	1						
8	1	1A1040-27720	ROLLER,RO.SHIFTER	4	4						
9	1	1A1040-28180	COVER, RUBBER	1	1						
10	1	1E6320-56010	ROD,MAIN CHANGE	1	1						
11	1	1E6090-56040	CLIP	1	1						
12	1	1E6090-56060	SPRING,MN.CHG.SHIFTR	1	1						
13	1	1E6090-56070	WASHER 8.3X22X1	1	1						
14	1	1E6090-56080	PIN,ROD STOP	1	1						
15	1	1E3002-56100	ARM L,SIDE CLUTCH	1	1						
16	1	1E6090-56100	STOPPER,MN.CHG.ROD	1	1						
17	1	1E3001-56131	ARM R,SIDE CLUTCH	1	1						
18	1	1E6070-56290	WASHER 8	2	2						
19	1	1E6090-56420	SEAL TC14284,OIL	2	2						
20	1	1E4030-99330	CASTLE PIN F 5X40	1	1						
21	1	26717-080002	NUT M 8	2	2						
22	1	26757-080002	LOCK NUT M 8 PLATED	1	1						

Fig.16. HANDLE

16. HANDLE



DE 3002-61300
N020320

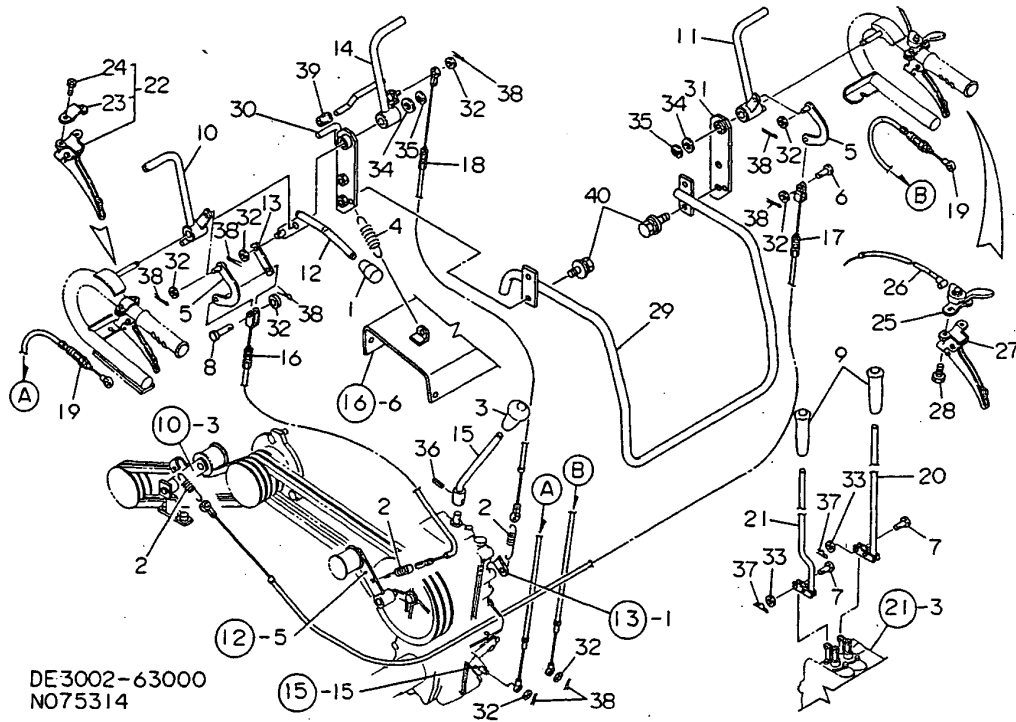
(A)=YMD60-EC
(B)=YMD60-N
(C)=

(D)=
(E)=
(F)=

REF.	LEV.	PARTS NO.	DESCRIPTION	QTY						I	R
				(A)	(B)	(C)	(D)	(E)	(F)		
1	1	1A1140-51410	CAP, HANDLE	2	2						
2	1	1A1040-58170	GRIP, HANDLE	2	2						
3	1	1E3002-61010	COLUMN,HANDLE	1	1						
I	3-1	1 1E3002-61011 (A=F030063) (B=F010057)		1	1						N
4	1	1E3002-61050-1	HANDLE L	1	1						
5	1	1E3002-61120-1	HANDLE R	1	1						
6	1	1E3002-61200-1	COVER,CHANGE	1	1						
I	6-1	1 1E3002-61201 (A=F030063) (B=F010057)	COVER, CHANGE	1	1						N
7	1	1E3001-61900	RUBBER KA30,VIBR.PRF	4	4						
8	1	22137-120000	WASHER 12,POLISHED	4	4						
9	1	22217-120000	WASHER 12,SPRING	4	4						
10	1	26367-080002	U-NUT M 8	4	4						
11	1	26717-120002	NUT M12	4	4						
12	1	22137-120000	WASHER 12,POLISHED	2	2						
13	1	26450-120602	BOLT M12X 60	4	4						
14	1	26016-100404	BOLT 10X40	4	4						
15	1	26018-060164	BOLT M 6X 16	5	5						

Fig.17. CONTROL

17. CONTROL



DE 3002-63000
NO75314

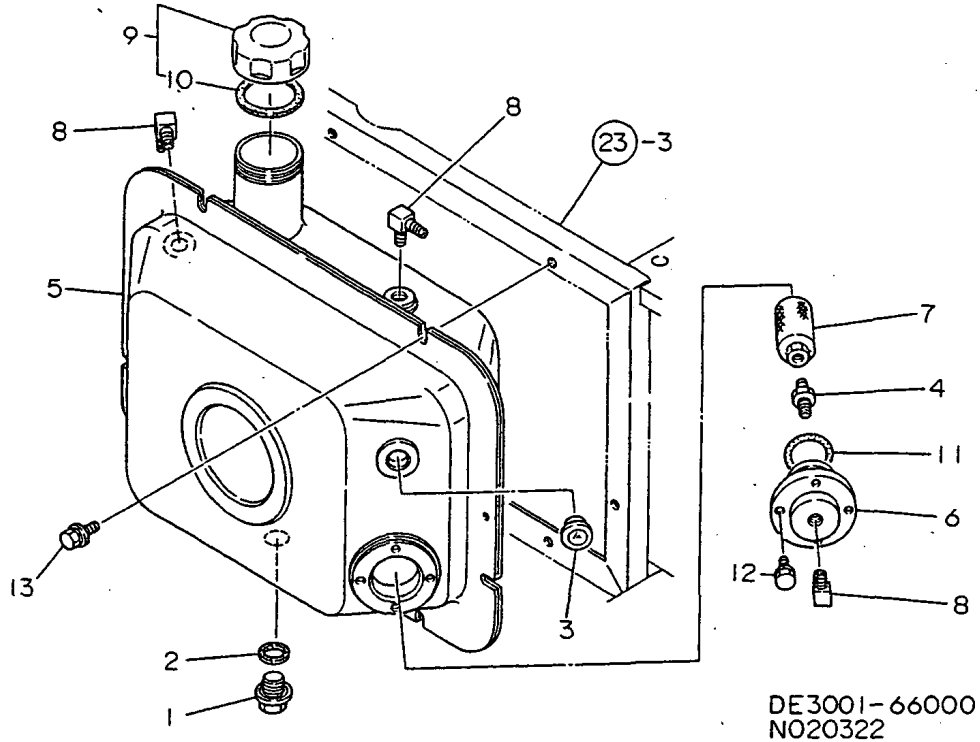
(A)=YMD60-EC
(B)=YMD60-N
(C)=

(D)=
(E)=
(F)=

REF.	LEV.	PARTS NO.	DESCRIPTION	QTY						I	R
				(A)	(B)	(C)	(D)	(E)	(F)		
1	1	1D2050-15480	KNOB,LEVER	1	1						
2	1	1E4060-16050	SPRING,CLUTCH	3	3						
3	1	1E4060-26430	GRIP	1	1						
4	1	1N1740-37170	SPRING,BACK STOP	1	1						
5	1	1A1380-55660	JOINT, LEVER	2	2						
6	1	1A1040-56900	PIN 6X 17	1	1						
7	1	1A1040-56900	PIN 6X 17	4	4						
I 7-1	1	22487-060160	PIN 6X 16	4	4						R
		(A=FXXXXXX) (B=FXXXXXX)									
8	1	1A1040-56910	PIN M 6X 23	1	1						
9	1	1A1120-57980	GRIP	2	2						
10	1	1E3002-63010	LEVER,MAIN CLUTCH	1	1						
11	1	1E3002-63050	LEVER,VIBRATOR	1	1						
12	1	1E3002-63100	LEVER,PUSH	1	1						
I 12-1	1	1E3002-63101	LEVER,PUSH	1	1						N
		(A=F030073) (B=F010057)									
13	1	1E3002-63130	LINK,LEVER	1	1						
14	1	1E3002-63150	LEVER,PARKING	1	1						
15	1	1E3001-63200	LEVER,MAIN CHANGE	1	1						
16	1	1E3001-63301	WIRE,MAIN CLUTCH	1	1						
17	1	1E3001-63311	WIRE,VIBRATOR	1	1						
18	1	1E3001-63321	WIRE,PARKING BRAKE	1	1						
19	1	1E3001-63340	WIRE,SIDE CLUTCH	2	2						
20	1	1E3002-63400	LEVER 1,CONTROL	1	1						
21	1	1E3002-63450	LEVER 2,CONTROL	1	1						
22	1	1E3002-63500	LEVER L COMP.,CLUTCH	1	1						
23	2	1A1040-57390	BAND,CLAMPING	1	1						
24	2	26117-060309	BOLT M 6X 30 PLATED	2	2						
25	1	1E3001-63270	LEVER CMP,ACCELERAT.	1	1						
26	1	1E4351-50180	WIRE, ACCELERATOR	1	1						
27	1	1E3002-63610	LEVER R COMP.,CLUTCH	1	1						
28	1	26117-060259	BOLT M 6X 25 PLATED	2	2						
29	1	1E3002-63651	LEVER,BACK STOP	1	1						
30	1	1E3002-63700	FITTINGS L,FULCRUM	1	1						
I 30-1	1	1E3002-63701		1	1						N
		(A=FXXXXXX) (B=FXXXXXX)									
31	1	1E3002-63750	FITTINGS R,FULCRUM	1	1						
32	1	22137-060000	WASHER 6, POLISHED	8	8						
33	1	22137-060000	WASHER 6, POLISHED	4	4						
34	1	22137-130000	WASHER 13	2	2						
35	1	22272-000100	CIRCLIP E-10	2	2						
36	1	22351-050025	SPRING PIN 5X25	1	1						
37	1	22360-060000	SNAP PIN 6	4	4						
38	1	22417-200160	COTTER PIN 2.0X16	8	8						
39	1	23061-100020	PIPE 10X20,VINYL	1	1						
40	1	26018-080204	BOLT M 8X 20	4	4						

Fig.18. OIL TANK

18. OIL TANK



OCNP2-G60100 18. OIL TANK

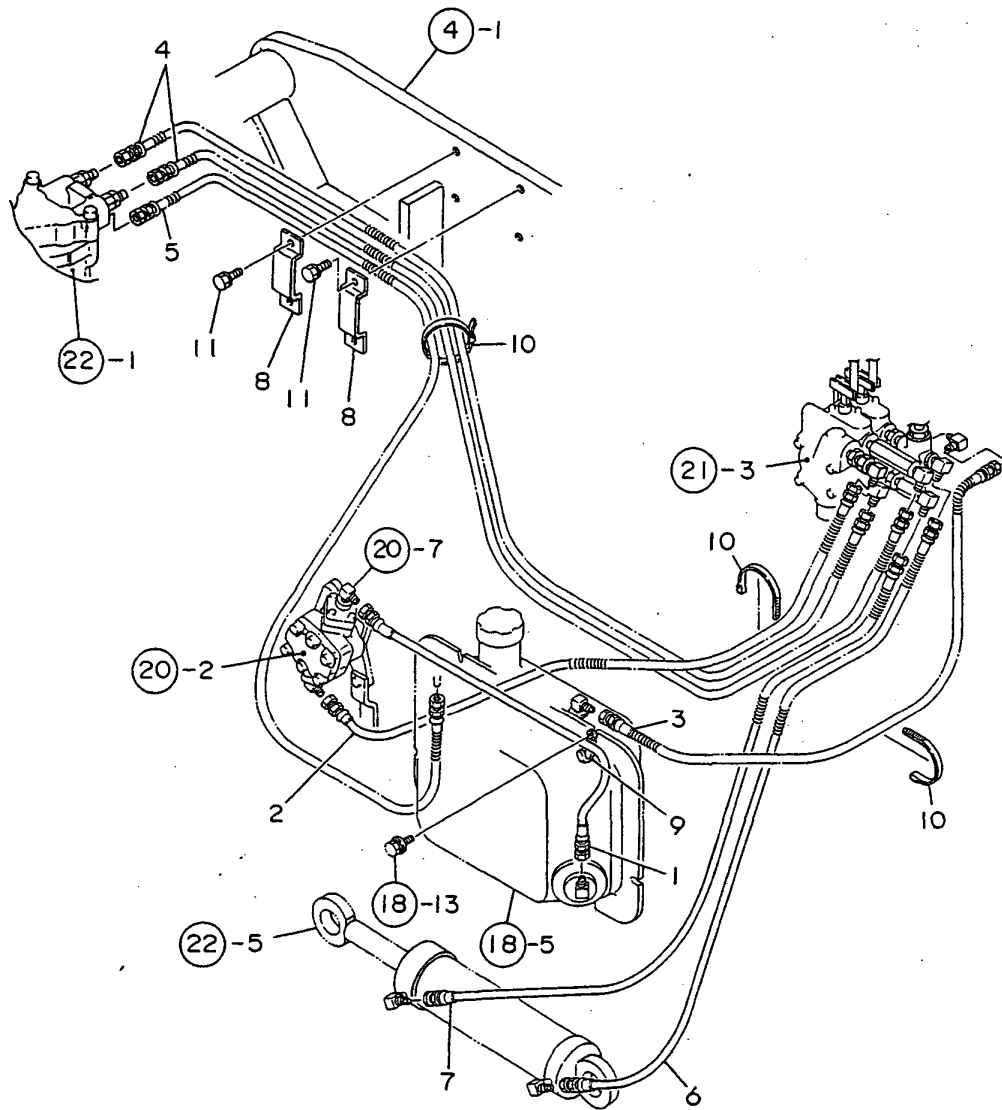
(A)=YMD60-EC
(B)=YMD60-N
(C)=

(D)=
(E)=
(F)=

REF.	LEV.	PARTS NO.	DESCRIPTION	QTY						I	R
				(A)	(B)	(C)	(D)	(E)	(F)		
1	1	1E6460-03200	PLUG 16, DRAIN	1	1						
2	1	1E6460-03210	PACKING 16	1	1						
3	1	1A1070-28210	WINDOW 20,OIL CHECK	1	1						
4	1	1E3000-66900	NIPPLE PT1/4	1	1						
5	1	1E3001-66010	TANK,HYDRAULIC OIL	1	1						
6	1	1E3001-66130	SOCKET	1	1						
7	1	1E3000-66910	SUCTION STRAINER	1	1						
8	1	1E6030-67030	ELBOW 90	3	3						
9	1	7E6251-77320	CAP ASSY, FUEL	1	1						
10	2	1A1120-61541	SEAL,RUBBER	1	1						
11	1	24321-000350	O-RING 1A G-35.0	1	1						
12	1	26016-060164	BOLT 6X16 W/L.W.	4	4						
13	1	26018-080164	BOLT M 8X 16	6	6						

Fig.19. PIPING

19. PIPING



OCNP2-G60100 19. PIPING

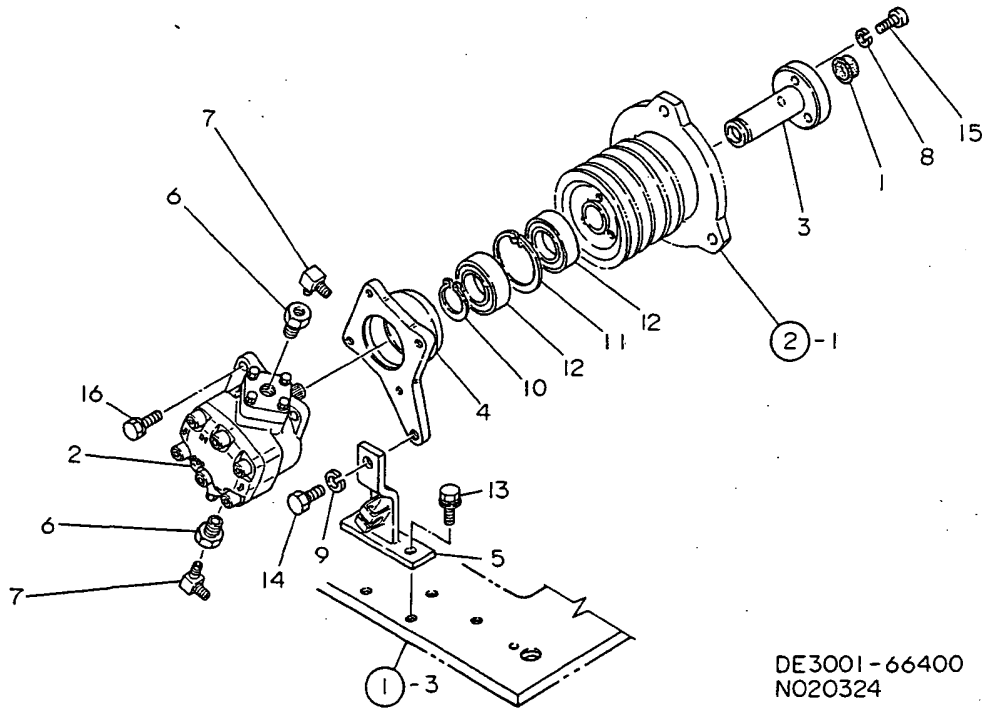
(A)=YMD60-EC
(B)=YMD60-N
(C)=

(D)=
(E)=
(F)=

REF.	LEV.	PARTS NO.	DESCRIPTION	QTY						I	R
				(A)	(B)	(C)	(D)	(E)	(F)		
1	1	1E3001-67010	HOSE P-T, HYDRAULIC	1	1						
2	1	1E3001-67020	HOSE C-P, HYDRAULIC	1	1						
3	1	1E3001-67030	HOSE C-T, HYDRAULIC	1	1						
4	1	1E3001-67041	HOSE C-M, HYDRAULIC	2	2						
I 4-1	1	1E3001-67042 (A=F030051) (B=F010051)	HOSE C-M, HYDRAULIC	2	2						N
5	1	1E3001-67051	HOSE M-T, HYDRAULIC	1	1						
6	1	1E3001-67060	HOSE C-SF, HYDRAULIC	1	1						
7	1	1E3001-67070	HOSE C-SR, HYDRAULIC	1	1						
8	1	1E3002-66100	CLAMP, HOSE	2	2						
9	1	1E6020-83890	CLIP	1	1						
10	1	1E6102-84970	BAND 140, WIRE LOCK	3	3						
11	1	26016-080164	BOLT M 8 X 16	4	4						

Fig.20. HYDRAULIC PUMP

20. HYDRAULIC PUMP



DE3001-66400
NO20324

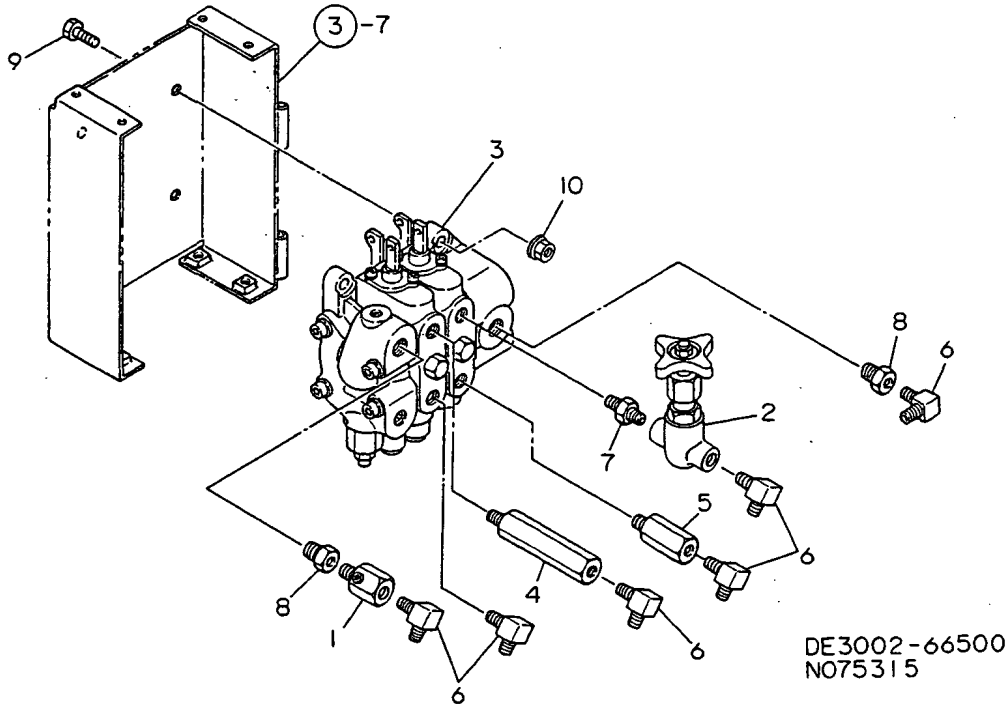
(A)=YMD60-EC
(B)=YMD60-N
(C)=

(D)=
(E)=
(F)=

REF.	LEV.	PARTS NO.	DESCRIPTION	QTY						I	R
				(A)	(B)	(C)	(D)	(E)	(F)		
1	1	1NE050-43760	CAP 20X8	1	1						
2	1	1E3001-66160	PUMP GP-OB-2,GEAR	1	1						
3	1	1E3001-66170	SHAFT,PUMP MOUNTING	1	1						
4	1	1E3001-66180	FLANGE,PUMP MTG.	1	1						
5	1	1E3001-66210	SEAT,FLANGE	1	1						
6	1	1E3000-66950	BUSHING 1/2X1/4	2	2						
7	1	1E6030-67030	ELBOW 90	2	2						
8	1	22217-080000	SPRING WASHER 8	3	3						
9	1	22217-100000	SPRING WASHER 10	1	1						
10	1	22242-000250	CIRCLIP 25S	1	1						
11	1	22252-000521	CIRCLIP 52	1	1						
12	1	24104-062054	BALL BEARING	2	2						
13	1	26018-080204	BOLT M 8X 20	2	2						
14	1	26116-100202	BOLT M10X 20 PLATED	1	1						
15	1	26450-080302	BOLT M 8X 30	3	3						
16	1	26013-080202	BOLT W/WASHER M8X20	4	4						

Fig.21. HYDRAULIC VALVE

21. HYDRAULIC VALVE



OCNP2-G60100 21. HYDRAULIC VALVE

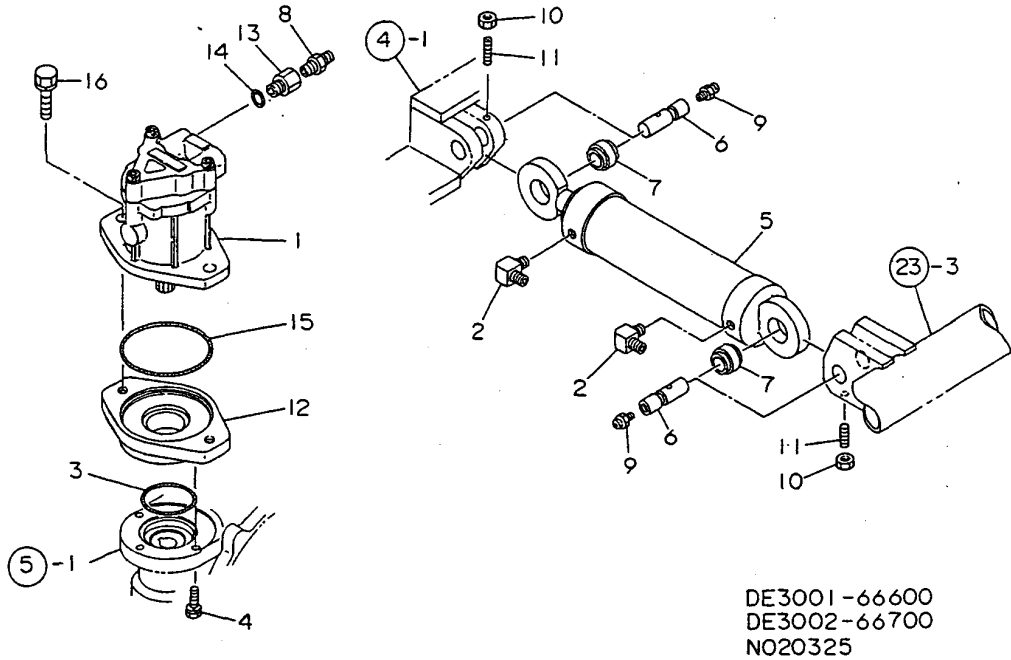
(A)=YMD60-EC
(B)=YMD60-N
(C)=

(D)=
(E)=
(F)=

REF.	LEV.	PARTS NO.	DESCRIPTION	Q'TY						I	R
				(A)	(B)	(C)	(D)	(E)	(F)		
1	1	1N1910-45310	FILTER ASSY, LINE	1	1						
2	1	1E3002-66150	VALVE COMP.,STOP	1	1						
3	1	1E3001-66300	VALVE,CONTROL	1	1						
I	3A	1E3001-66320 (A=FXXXXXX) (B=FXXXXXX)	SUPPOT,LEVER	2	2						W
4	1	1E3002-66350	CONNECTOR A PT1/4	1	1						
5	1	1E3002-66370	CONNECTOR B PT1/4	1	1						
6	1	1E6030-67030	ELBOW 90	6	6						
7	1	23395-02000	JOINT RRN1/4	1	1						
8	1	23396-030200	JOINT RRB3/8X1/4	2	2						
9	1	26117-080302	BOLT M 8X 30	3	3						
10	1	26367-080002	U-NUT M 8	3	3						

Fig.22. OIL MOTOR

22. OIL MOTOR



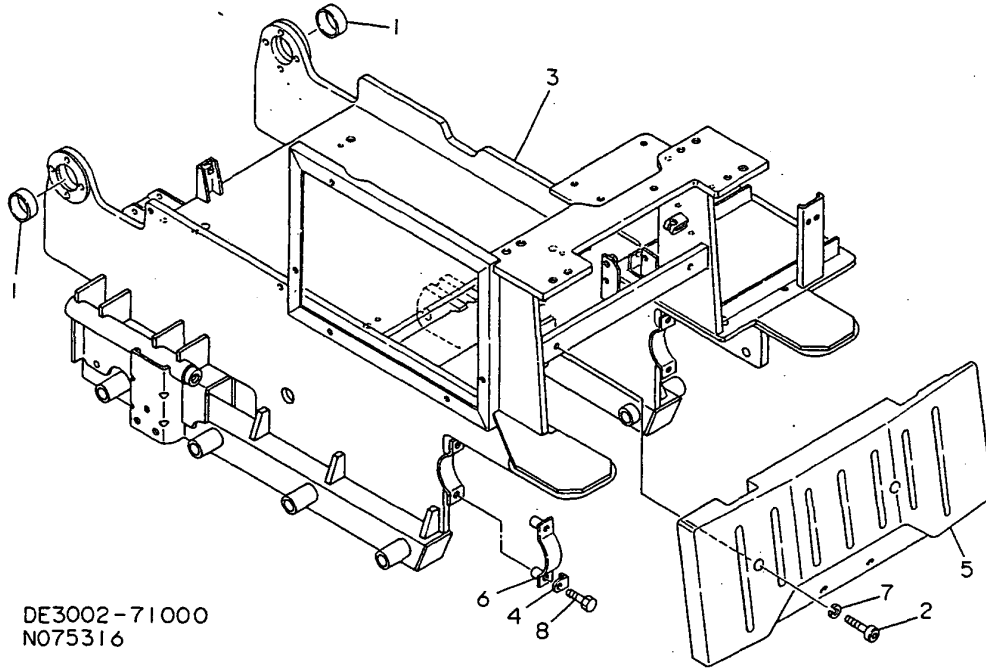
(A)=YMD60-EC
(B)=YMD60-N
(C)=

(D)=
(E)=
(F)=

REF.	LEV.	PARTS NO.	DESCRIPTION	QTY						I	R
				(A)	(B)	(C)	(D)	(E)	(F)		
1	1	1E3001-66250	MOTOR MSF,OIL	1	1						
2	1	1E6030-67030	ELBOW 90	2	2						
3	1	24321-000600	O-RING 1A G-60.0	1	1						
4	1	26013-080302	BOLT M 8X 30	3	3						
5	1	1E3002-66500	CYLINDER,HYDRAULIC	1	1						
6	1	1E3002-66760	PIN,GUDGEON	2	2						
7	1	1E3000-66980	SHFT SUPPORT	2	2						
8	1	1C6140-46750	ADAPTER 1/4	3	3						
9	1	24761-010000	NIPPLE M6F, GREASE	2	2						
10	1	26797-080002	LOCK NUT M 8	2	2						
11	1	26979-080302	SCREW 8X30,HEX.S.LOC	2	2						
12	1	1E3001-66260	MOUNT,OIL MOTOR	1	1						
13	1	1N1940-42720	NIPPLE PF3/8 PT1/4	3	3						
14	1	24311-000140	O-RING 1A P-14.0	3	3						
15	1	24321-001000	O-RING 1A G-100.0	1	1						
16	1	26013-120302	BOLT W/WASHER M12X30	2	2						

Fig.23. CHASSIS FRAME

23. CHASSIS FRAME



DE3002-71000
NO75316

OCNP2-G60100 23. CHASSIS FRAME

(A)=YMD60-EC
(B)=YMD60-N
(C)=

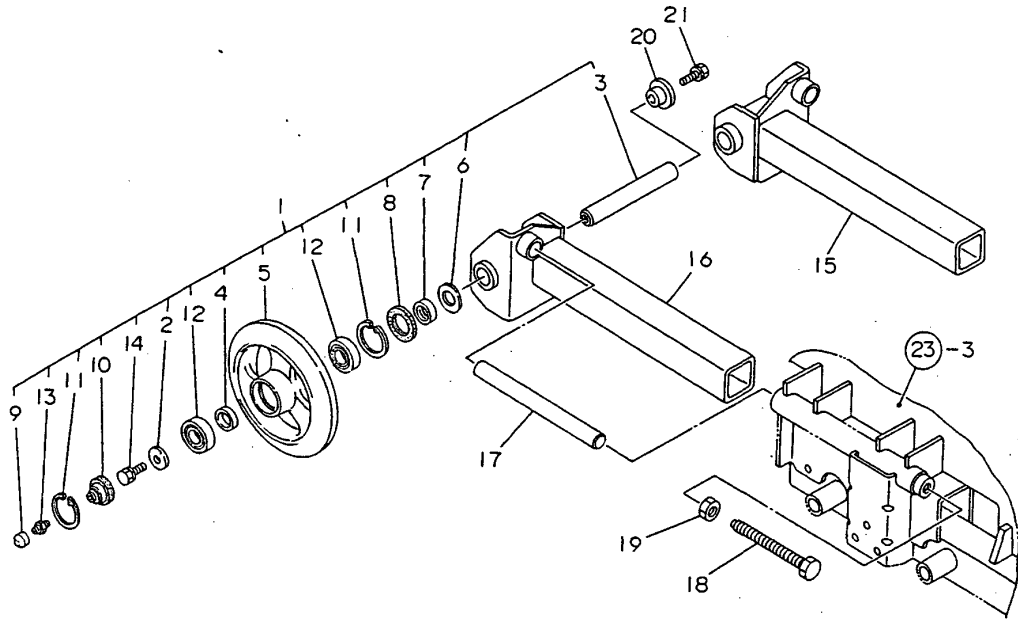
(D)=
(E)=
(F)=

REF.	LEV.	PARTS NO.	DESCRIPTION	QTY						I	R
				(A)	(B)	(C)	(D)	(E)	(F)		
1	1	1E3000-11280	BUSH	2	2						
2	1	1E3000-23900	BOLT 12X45,HEX.SH.	2	2						
3	1	1E3002-71010	FRAME,CHASSIS	1	1						
4	1	1E6150-71370	WASHER, LOCKING	4	4						
5	1	1E3001-71650	WEIGHT,BALANCE	1	1						
6	1	1E3001-71750	PLATE CMP,FINAL CLMP	2	2						
7	1	22217-120000	WASHER 12,SPRING	2	2						
8	1	26117-100452	BOLT M10X 45 PLATED	4	4						
I	8-1	1	26116-100452	BOLT M10X 45 PLATED	4	4					N

(A=F030051) (B=F010051)

Fig.24. IDLER

24. IDLER



DE3002-73000
N075317

(A)=YMD60-EC
(B)=YMD60-N
(C)=

(D)=
(E)=
(F)=

REF.	LEV.	PARTS NO.	DESCRIPTION	Q'TY						I	R	
				(A)	(B)	(C)	(D)	(E)	(F)			
I	1	1	7E3002-73180	IDLER ASSY.	2	2						
I	2	2	1A1680-46460	WASHER 12X33X6	2	2						
	3	2	1E3002-73151	SHAFT, IDLER	2	2						
	4	2	1E6460-73170	COLLAR	2	2						
	5	2	1E6910-73180	IDLER 215	2	2						
	6	2	1E6460-73190	COLLAR 25X46X3.2	2	2						
	7	2	1E6910-73190	SLEEVE 25X35X13	2	2						
	8	2	1E6910-73200	SEAL 35X47X8	2	2						
	9	2	1E6910-73540	CAP,GREASE	2	2						
	10	2	1E6910-73550	CAP 47,ROLLER	2	2						
	11	2	22252-000471	CIRCLIP 47	4	4						
	12	2	24101-060054	BALL BEARING	4	4						
	13	2	24761-060000	NIPPLE MT6X1, GREASE	2	2						
I	14	2	26013-120302	BOLT W/WASHER M12X30	2	2						
	15	1	1E3002-73051	METAL (L), IDLER	1	1						
	16	1	1E3002-73101	METAL R, IDLER	1	1						
	17	1	1E6910-73210	SHAFT, IDLER TENSION	2	2						
	18	1	1E6910-73350	BOLT, CRAWLER TENSION	2	2						
	19	1	26717-160002	NUT M16	2	2						
I	20	1	1E3002-73170	WASHER 12, IDLER	2	2						
I	21	1	26013-120452	BOLT M12X 45	2	2						

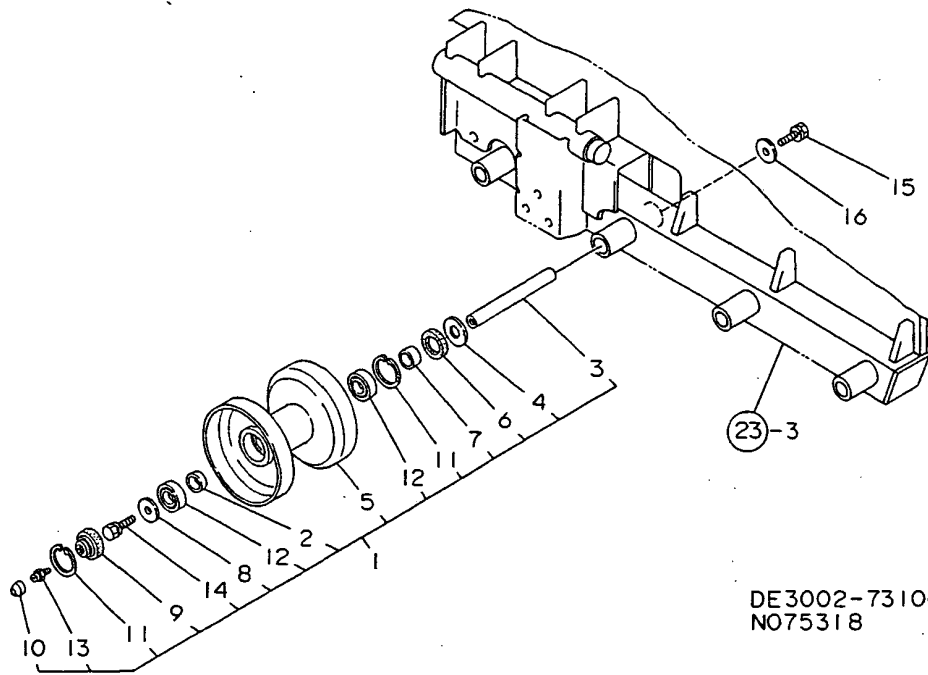
Fig.25. TRACK ROLLER

25. TRACK ROLLER

0CNP2-G60100 25. TRACK ROLLER

(A)=YMD60-EC
(B)=YMD60-N
(C)=

(D)=
(E)=
(F)=

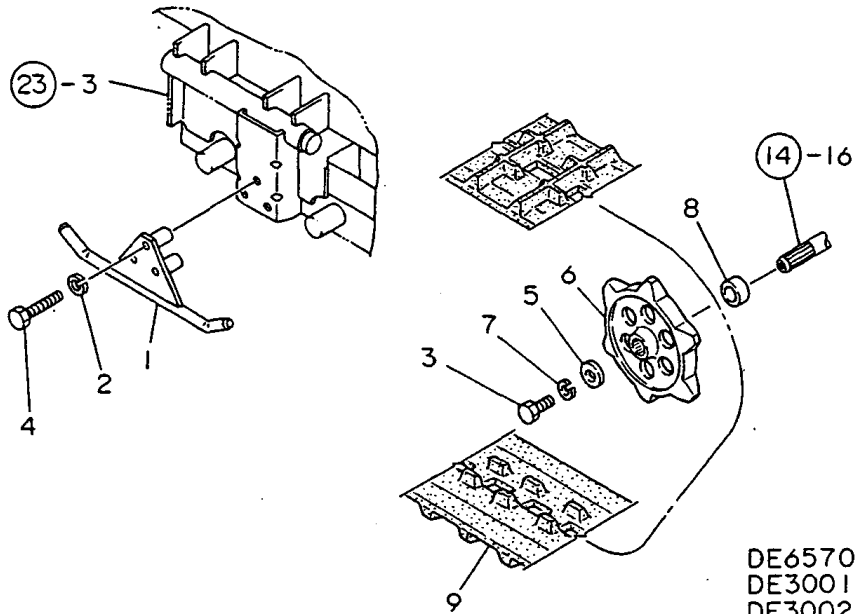


DE3002-73100
NO75318

REF.	LEV.	PARTS NO.	DESCRIPTION	QTY						I	R
				(A)	(B)	(C)	(D)	(E)	(F)		
1	1	7E3002-73100	TRACK ROLLER ASSY.	8	8						
2	2	1E6050-58240	COLLAR 20.3X25.4X12	8	8						
3	2	1E6460-73050	SHAFT, ROLLER	8	8						
4	2	1E6460-73080	COLLAR 20X41X3.2	8	8						
5	2	1E8090-73100	ROLLER, TRACK	8	8						
6	2	1E6910-73150	SEAL 30X42X8	8	8						
7	2	1E6910-73160	SLEEVE 20X30X13	8	8						
8	2	1E6570-73201	WASHER 10.5X28X3.2	8	8						
9	2	1E6910-73500	CAP 42, ROLLER	8	8						
10	2	1E6910-73540	CAP, GREASE	8	8						
11	2	22252-000421	CIRCLIP 42	16	16						
12	2	24101-060044	BALL BEARING 6004	16	16						
13	2	24761-060000	NIPPLE MT6X1, GREASE	8	8						
14	2	26043-100302	BOLT M10X 30	8	8						
15	1	26043-100302	BOLT M10X 30	8	8						
16	1	1A1380-46460	WASHER 10X33X6	8	8						

Fig.26. SPROCKET & CRAWLER

26. SPROCKET & CRAWLER



DE6570-73110
 DE3001-73500
 DE3002-73700
 N062034

OCNP2-G60100 26. SPROCKET & CRAWLER

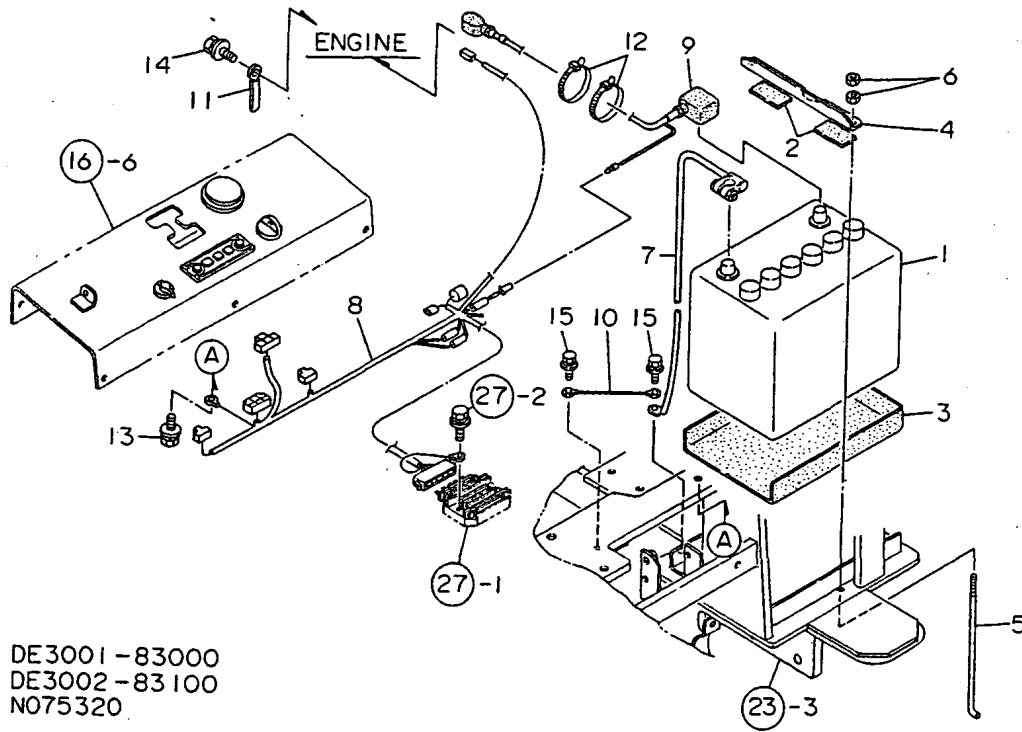
(A)=YMD60-EC
 (B)=YMD60-N
 (C)=

(D)=
 (E)=
 (F)=

REF.	LEV.	PARTS NO.	DESCRIPTION	Q'TY						I	R
				(A)	(B)	(C)	(D)	(E)	(F)		
1	1	1E8180-73600	GUIDE,CRAWLER	2	2						
2	1	22217-100000	SPRING WASHER 10	6	6						
3	1	26116-100302	BOLT M10X 30 PLATED	2	2						
4	1	26116-100602	BOLT M10X 60 PLATED	6	6						
5	1	1A1380-46460	WASHER 10X33X6	2	2						
6	1	1E6150-54581	SPROCKET	2	2						
7	1	22217-100000	SPRING WASHER 10	2	2						
8	1	1E6150-54570	COLLAR 25.2X38X11.5	2	2						
9	1	1E3002-73500	CRAWLER 20-72X34	2	2						

Fig.28. BATTERY

28. BATTERY



DE3001-83000
 DE3002-83100
 N075320

OCNP2-G60100 28. BATTERY

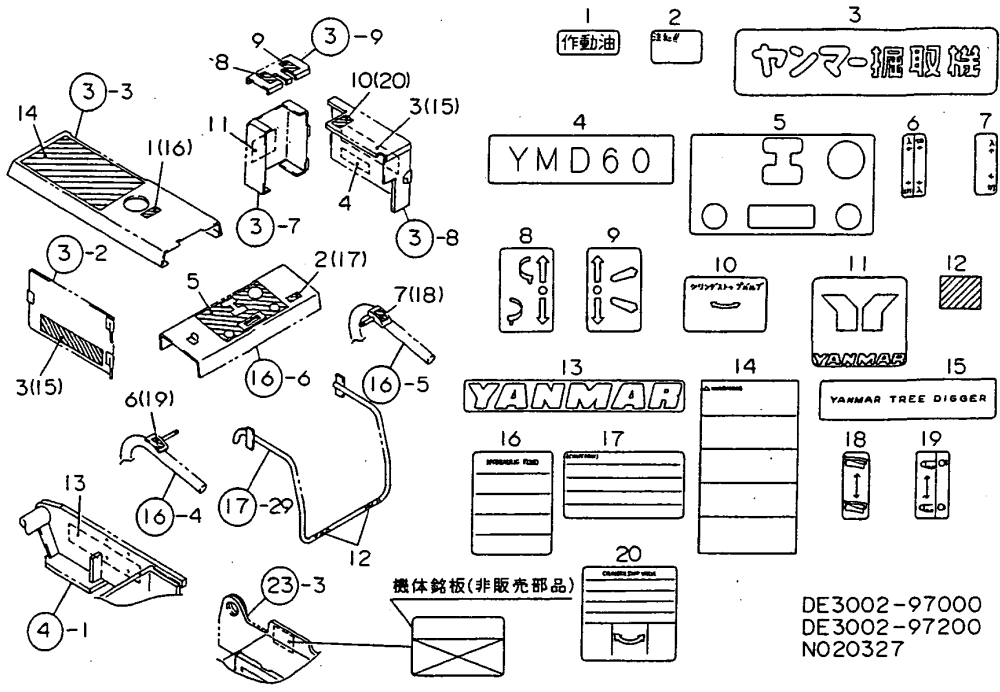
(A)=YMD60-EC
 (B)=YMD60-N
 (C)=

(D)=
 (E)=
 (F)=

REF.	LEV.	PARTS NO.	DESCRIPTION	QTY						I	R
				(A)	(B)	(C)	(D)	(E)	(F)		
1	1	1N1251-51070	BATTERY NS70	1	1						
2	1	1E3000-67410	RUBBER A,HOSE RETAIN	2	2						
I	2-1	1E3000-67411	RUBBER A,HOSE RETAIN	2	2						N
		(A=F030051) (B=F010051)									
3	1	1E3001-81050	PLATE,RUBBER	1	1						
4	1	1E3001-81070	PLATE,BATTERY KEEP	1	1						
5	1	1E6320-81820	ROD, BATTERY CLAMP	2	2						
6	1	26717-060002	NUT M 6	4	4						
7	1	1N1251-51090	CORD,BATTERY NEGATIV	1	1						
8	1	1E3002-81150	HARNESS A	1	1						
9	1	1E3001-81160	CABLE A,BATTERY	1	1						
10	1	1E3001-81170	HARNESS 250,WIRE	1	1						
11	1	1E6020-83890	CLIP	1	1						
12	1	1E6150-83910	BAND 195	2	2						
13	1	26018-060124	BOLT M 6X 12	1	1						
14	1	26018-060124	BOLT M 6X 12	1	1						
15	1	26018-080164	BOLT M 8X 16	2	2						

Fig.29. LABELS

29. LABELS



DE3002-97000
DE3002-97200
N020327

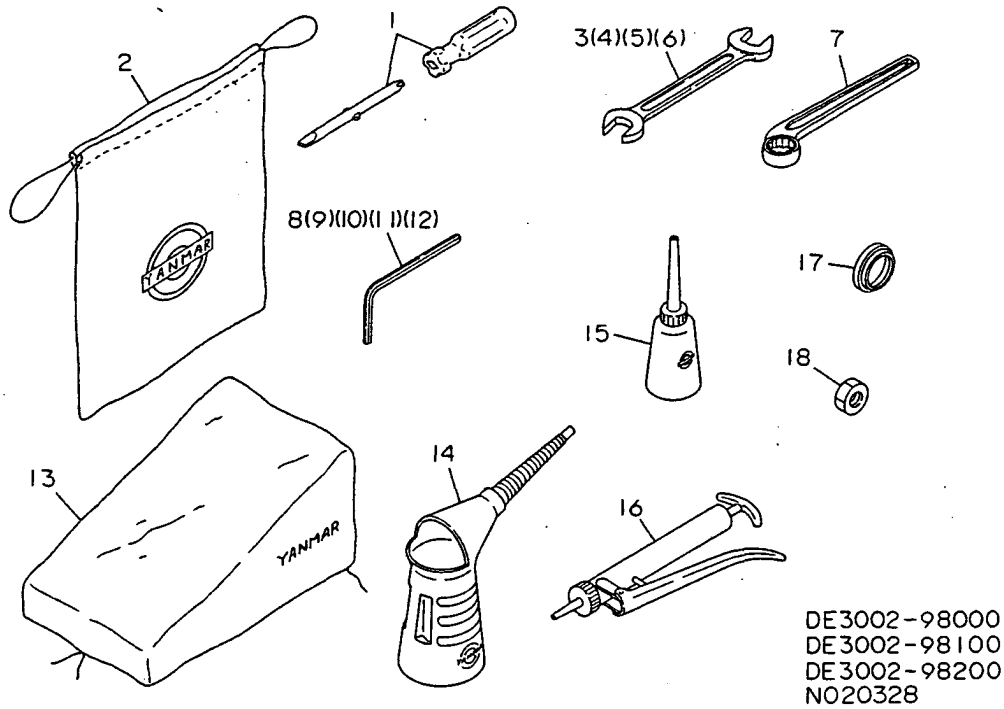
(A)=YMD60-EC
(B)=YMD60-N
(C)=

(D)=
(E)=
(F)=

REF.	LEV.	PARTS NO.	DESCRIPTION	QTY						I	R	
				(A)	(B)	(C)	(D)	(E)	(F)			
1	1	172336-03500	LABEL, HYD. OIL		1							
2	1	1E6320-78910	LABEL,KEY SW.CAUTION		1							
I 2-1	1	1E3002-97340	LABEL,SWITCH CAUTION		1						S	1
			(B=FXXXXXX)									
3	1	1E3001-97050	LABEL,DIGGER			2						
4	1	1E3002-97060	LABEL,MODEL		1	1						
5	1	1E3002-97120	LABEL,MAIN CHANGE		1	1						
6	1	1E3001-97130	LABEL,MAIN CLUTCH			1						
7	1	1E3001-97140	LABEL,VIBRATOR			1						
8	1	1E3002-97160	LABEL 1,CONTROL		1	1						
9	1	1E3002-97170	LABEL 2,CONTROL		1	1						
10	1	1E3001-97200	LABEL,STOP VALVE			1						
11	1	933110-96000	LABEL		1	1						
12	1	1N1730-67151	MARK 1,DANGER		2	2						
13	1	1E8061-97950	MARK,FRONT COVER		1	1						
14	1	1E3002-97290	LABEL,HANDL'G CAUT'N		1							
15	1	1E3002-97300	LABEL,DIGGER			2						
16	1	1E3002-97310	LABEL,HYDRAULIC OIL			1						
17	1	1E3002-97320	LABEL,KEY SW.CAUTION		1							
18	1	1E3002-97360	MARK,VIBRATOR			1						
19	1	1E3002-97370	MARK,MAIN CLUTCH			1						
20	1	1E3002-97400	LABEL,STOP VALVE			1						
I 21	1	1E3002-97410	LABEL,STOP VALVE			1						W
			(A=FXXXXXX)									

Fig.30. TOOLS & ACCESSORIES

30. TOOLS & ACCESSORIES



(A)=YMD60-EC
(B)=YMD60-N
(C)=

(D)=
(E)=
(F)=

REF.	LEV.	PARTS NO.	DESCRIPTION	QTY						I	R
				(A)	(B)	(C)	(D)	(E)	(F)		
1	1	1A1290-82050	SCREWDRIVER,COMBINAT	1	1						
2	1	1A1180-83000	BAG, TOOL	1	1						
3	1	28110-100120	WRENCH 10X12	1	1						
4	1	28110-140170	WRENCH 14X17	1	1						
5	1	28110-190220	WRENCH 19X22	1	1						
6	1	28110-220240	WRENCH 22X24	1	1						
7	1	1E3002-98020	WRENCH 36	1	1						
8	1	28150-040000	BAR WRENCH	1	1						
9	1	28150-050000	BAR WRENCH	1	1						
10	1	28150-060000	BAR WRENCH 6	1	1						
11	1	28150-080000	BAR WRENCH 8	1	1						
12	1	28150-100000	BAR WRENCH	1	1						
13	1	1E3001-98850	COVER,OPERATOR SEAT	1	1						
14	1	7E4133-99290	JUG ASSY, OIL	1	1						
15	1	28210-000140	FEEDER, OIL	1	1						
16	1	933110-09500	GUN, GREASE	1	1						
17	1	1E3002-23180	SCRAPER 2531,SER.	1	1						
18	1	26737-240002	NUT M24	1	1						
19	1	1E3002-98102		1	1						

Part Number Index

All parts are stipulated in the order of part numbers.

(Depending on the area in which the part is used.)

This index will display the location of the part according to each part number.

PARTS No. INDEX

PARTS No.	Fig.	Ref.No.
172147-17200	27	3
172336-03500	29	1
172730-55110	27	4
192010-24160	14	4
1A1040-26060	7	6
	13	13
1A1040-26320	15	1
1A1040-26750	15	3
1A1040-27720	15	8
1A1040-28180	15	9
1A1040-56900	17	6
		7
1A1040-56910	17	8
1A1040-57390	17	23
1A1040-58170	16	2
1A1070-28210	18	3
1A1070-28690	13	28
1A1120-28130	14	15
1A1120-57980	17	9
1A1120-61541	18	10
1A1140-51410	16	1
1A1180-83000	30	2
1A1290-82050	30	1
1A1380-46460	25	16
	26	5
1A1380-55660	17	5
1A1650-21080	9	4
1A1680-46460	24	2
1A2020-83100	27	6
1A2020-83120	27	7
1A2020-83130	27	8
1A2020-83350	27	9
1C6140-46750	22	8
1D2050-15480	17	1
1D4100-32570	8	9
1E1030-11070	10	1
1E3000-11250	4	2
1E3000-11260	4	3
1E3000-11280	23	1
1E3000-11290	4	4
1E3000-11300	4	5
1E3000-11900	4	8
1E3000-12120	6	9
1E3000-23900	11	13
	23	2
1E3000-66900	18	4
1E3000-66910	18	7
1E3000-66950	20	6
1E3000-66980	22	7
1E3000-67410	28	2

PARTS No.	Fig.	Ref.No.
1E3000-67411	28	2 -1
1E3001-01020	2	1
1E3001-01050	1	3
1E3001-01190	2	4
1E3001-01601	3	4
1E3001-11470	4	7
1E3001-12010	5	1
1E3001-12080	5	6
1E3001-12100	5	7
1E3001-12220	6	12
1E3001-12232	6	2
1E3001-12400	6	18
1E3001-12860	6	5
1E3001-12880	6	6
1E3001-13151	8	1
1E3001-13200	8	4
1E3001-13210	8	5
1E3001-13220	8	6
1E3001-14010	9	1
1E3001-14020	9	2
1E3001-14030	9	3
1E3001-14100	9	11
1E3001-14110	9	12
1E3001-14120	9	13
1E3001-14140	9	14
1E3001-14150	9	15
1E3001-14160	9	16
1E3001-14170	9	17
1E3001-14180	9	18
1E3001-14900	9	31
1E3001-15150	10	4
1E3001-52000	12	3
1E3001-52050	12	5
1E3001-52120	12	7
1E3001-52170	12	8
1E3001-53040	13	30
1E3001-53060	14	16
1E3001-53070	14	17
1E3001-53080	14	18
1E3001-53090	14	19
1E3001-53150	13	16
1E3001-53151	13	16 -1
1E3001-53200	13	12
1E3001-53201	13	12 -1
1E3001-56131	15	17
1E3001-61900	16	7
1E3001-63200	17	15
1E3001-63270	17	25
1E3001-63301	17	16
1E3001-63311	17	17

PARTS No.	Fig.	Ref.No.
1E3001-63321	17	18
1E3001-63340	17	19
1E3001-66010	18	5
1E3001-66130	18	6
1E3001-66160	20	2
1E3001-66170	20	3
1E3001-66180	20	4
1E3001-66210	20	5
1E3001-66250	22	1
1E3001-66260	22	12
1E3001-66300	21	3
1E3001-66320	21	3 A
1E3001-67010	19	1
1E3001-67020	19	2
1E3001-67030	19	3
1E3001-67041	19	4
1E3001-67042	19	4 -1
1E3001-67051	19	5
1E3001-67060	19	6
1E3001-67070	19	7
1E3001-71650	23	5
1E3001-71750	23	6
1E3001-81050	28	3
1E3001-81070	28	4
1E3001-81160	28	9
1E3001-81170	28	10
1E3001-97050	29	3
1E3001-97130	29	6
1E3001-97140	29	7
1E3001-97200	29	10
1E3001-98850	30	13
1E3002-01100	2	2
1E3002-01150	2	3
1E3002-01300	3	1
1E3002-01450	3	2
1E3002-01500-1	3	3
1E3002-01600	3	5
1E3002-01650	3	6
1E3002-01700-1	3	7
1E3002-01750-1	3	8
1E3002-01830-1	3	9
1E3002-11010	4	1
1E3002-11450	4	6
1E3002-12000	6	1
1E3002-12020	5	2
1E3002-12021	5	2 -1
1E3002-12030	5	3
1E3002-12050	5	4
1E3002-12060	5	5
1E3002-12130	6	10

PARTS No.	Fig.	Ref.No.
1E3002-12200	6	11
1E3002-12240	6	13
1E3002-12260	6	14
1E3002-12270	6	3
1E3002-12280	6	4
1E3002-12300	6	16 -1
1E3002-12311	6	15
1E3002-12320	6	16
1E3002-12370	6	17
1E3002-12390	6	34
1E3002-12920	6	19
1E3002-12930	6	20
1E3002-13010	7	1
1E3002-13050	7	2
1E3002-13060	7	3
1E3002-13110	7	4
1E3002-13120	7	5
1E3002-13170	8	2
1E3002-13190	8	3
1E3002-13240	8	7
1E3002-13260	8	8
1E3002-13261	8	8 -1
1E3002-14200	9	19
1E3002-14210	9	20
1E3002-14800	9	30
1E3002-15050	10	2
1E3002-15100	10	3
1E3002-15200	10	5
1E3002-21000	11	1
1E3002-21001	11	1 -1
1E3002-21280	11	2
1E3002-21300	11	3
1E3002-23050	11	24
1E3002-23051	11	24 -1
1E3002-23052	11	24 -2
1E3002-23130	11	7
1E3002-23151	11	8
1E3002-23160	11	9
1E3002-23180	11	10
	30	17
1E3002-23200	11	11
1E3002-23300	11	12
1E3002-23301	11	12 -1
1E3002-23302	11	12 -2
1E3002-52010	12	4
1E3002-52100	12	6
1E3002-56100	15	15
1E3002-56350	13	36
1E3002-61010	16	3
1E3002-61011	16	3 -1

PARTS No. INDEX

PARTS No.	Fig.	Ref.No.
1E3002-61050-1	16	4
1E3002-61120-1	16	5
1E3002-61200-1	16	6
1E3002-61201	16	6 -1
1E3002-63010	17	10
1E3002-63050	17	11
1E3002-63100	17	12
1E3002-63101	17	12 -1
1E3002-63130	17	13
1E3002-63150	17	14
1E3002-63400	17	20
1E3002-63450	17	21
1E3002-63500	17	22
1E3002-63610	17	27
1E3002-63651	17	29
1E3002-63700	17	30
1E3002-63701	17	30 -1
1E3002-63750	17	31
1E3002-66100	19	8
1E3002-66150	21	2
1E3002-66350	21	4
1E3002-66370	21	5
1E3002-66500	22	5
1E3002-66760	22	6
1E3002-71010	23	3
1E3002-73051	24	15
1E3002-73101	24	16
1E3002-73151	24	3
1E3002-73170	24	20
1E3002-73500	26	9
1E3002-81150	28	8
1E3002-97060	29	4
1E3002-97120	29	5
1E3002-97160	29	8
1E3002-97170	29	9
1E3002-97290	29	14
1E3002-97300	29	15
1E3002-97310	29	16
1E3002-97320	29	17
1E3002-97340	29	2 -1
1E3002-97360	29	18
1E3002-97370	29	19
1E3002-97400	29	20
1E3002-97410	29	21
1E3002-98020	30	7
1E3002-98102	30	19
1E4030-24040	14	2
1E4030-24150	14	3
1E4030-27340	15	7
1E4030-27350	13	27

PARTS No.	Fig.	Ref.No.
1E4030-99330	15	20
1E4060-16050	17	2
1E4060-26430	17	3
1E4070-14040	14	1
1E4070-79020	12	9
1E4130-74010	14	3 -1
1E4351-50180	17	26
1E6020-25340	12	1
1E6020-83890	3	11
	12	10
	13	60
	19	9
	28	11
1E6030-67030	18	8
	20	7
	21	6
	22	2
1E6050-58240	25	2
1E6070-54030	14	20
1E6070-54060	14	21
1E6070-54070	14	22
1E6070-54091	14	23
1E6070-54110	14	24
1E6070-54140	14	25
1E6070-54230	14	28
1E6070-54240	14	29
1E6070-54410	14	31
1E6070-54460	14	32
1E6070-54610	14	33
	34	
1E6070-56290	15	18
1E6071-53360	13	32
1E6071-54220	14	27
1E6090-56040	15	11
1E6090-56060	15	12
1E6090-56070	15	13
1E6090-56080	15	14
1E6090-56100	15	16
1E6090-56420	15	19
1E6102-84970	19	10
1E6140-52210	13	2
1E6140-52240	13	3
1E6140-52260	13	4
1E6140-52270	13	5
1E6140-52280	13	6
1E6140-73420	14	35
1E6150-53141	13	31
1E6150-54210	14	26
1E6150-54370	14	30
1E6150-54570	26	8

PARTS No.	Fig.	Ref.No.
1E6150-54581	26	6
1E6150-56010	15	4
1E6150-56030	13	35
1E6150-71370	23	4
1E6150-83910	12	11
	28	12
1E6210-82580	3	10
1E6250-53740	13	33
1E6320-53030	13	29
1E6320-53740	13	34
1E6320-56010	15	10
1E6320-78910	29	2
1E6320-81820	28	5
1E6460-03200	18	1
1E6460-03210	18	2
1E6460-73050	25	3
1E6460-73080	25	4
1E6460-73170	24	4
1E6460-73190	24	6
1E6470-01350	1	4
1E6550-05050	27	1
1E6570-73201	25	8
1E6910-73150	25	6
1E6910-73160	25	7
1E6910-73180	24	5
1E6910-73190	24	7
1E6910-73200	24	8
1E6910-73210	24	17
1E6910-73350	24	18
1E6910-73500	25	9
1E6910-73540	24	9
	25	10
1E6910-73550	24	10
1E8061-97950	29	13
1E8090-73100	25	5
1E8180-73600	26	1
1N1070-24300	13	19
1N1070-24430	13	20
1N1070-24451	13	21
1N1070-24480	13	22
1N1070-24510	13	23
1N1070-24520	13	24
1N1070-24530	13	25
1N1070-24750	13	11
1N1070-24811	13	1
1N1070-24910	13	26
1N1070-25010	14	5
1N1070-25020	14	6
1N1070-25031	14	7
1N1070-25041	14	8

PARTS No.	Fig.	Ref.No.
1N1070-25181	14	9
1N1070-25210	14	10
1N1070-25350	14	11
1N1070-25360	14	12
1N1070-25450	14	13
1N1070-25460	14	14
1N1070-26410	15	2
1N1070-26451	15	6
1N1251-51070	28	1
1N1251-51090	28	7
1N1730-67151	29	12
1N1740-37170	17	4
1N1910-45310	21	1
1N1940-42720	22	13
1NE050-43760	20	1
7E3002-73100	25	1
7E3002-73180	24	1
7E4133-99290	30	14
7E6150-51500	10	6
	12	2
7E6251-77320	18	9
933110-09500	30	16
933110-96000	29	11



YANMAR CO., LTD.